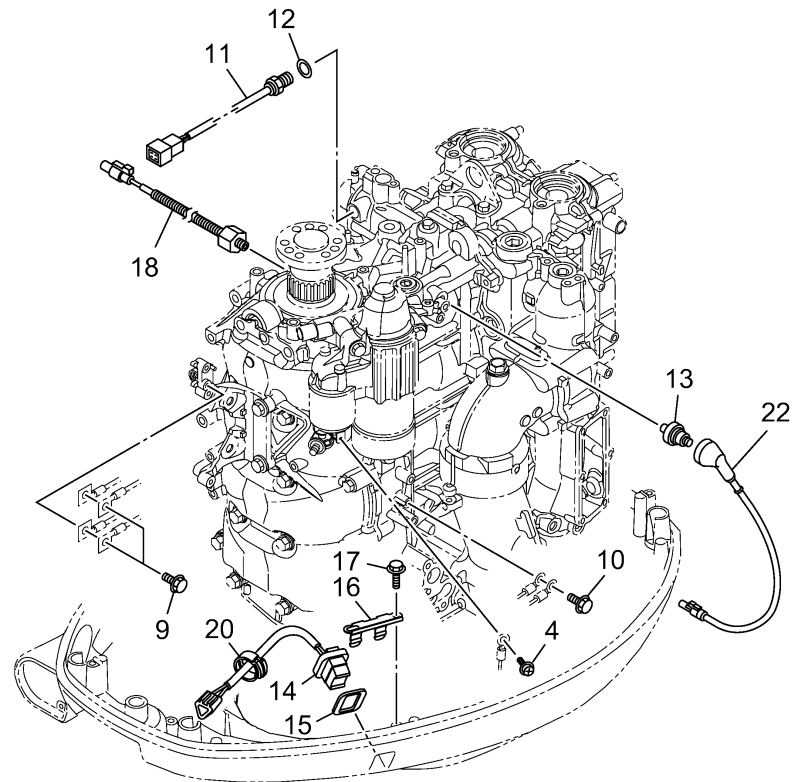
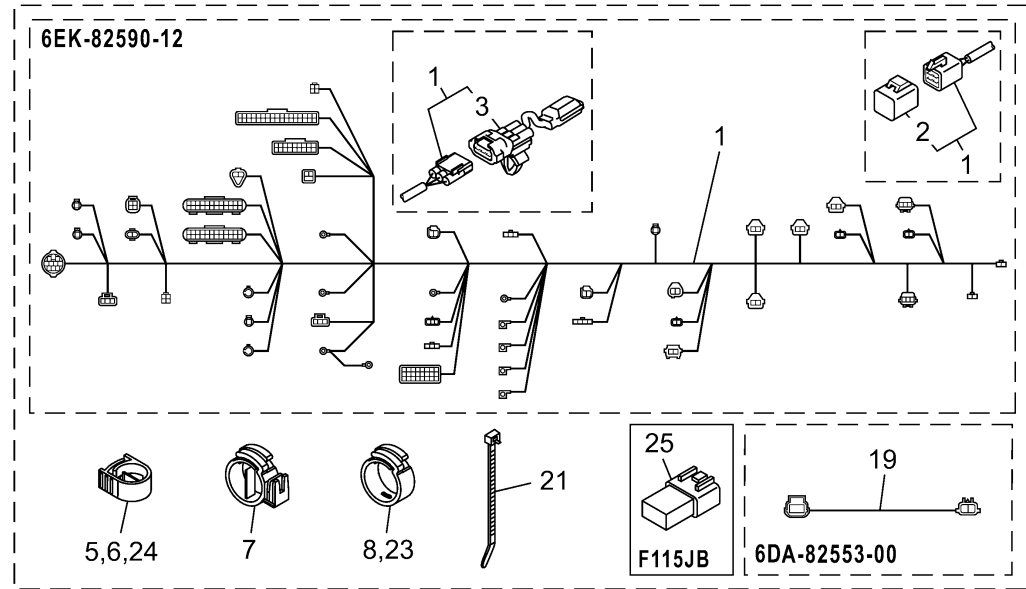


# ELECTRICAL 5

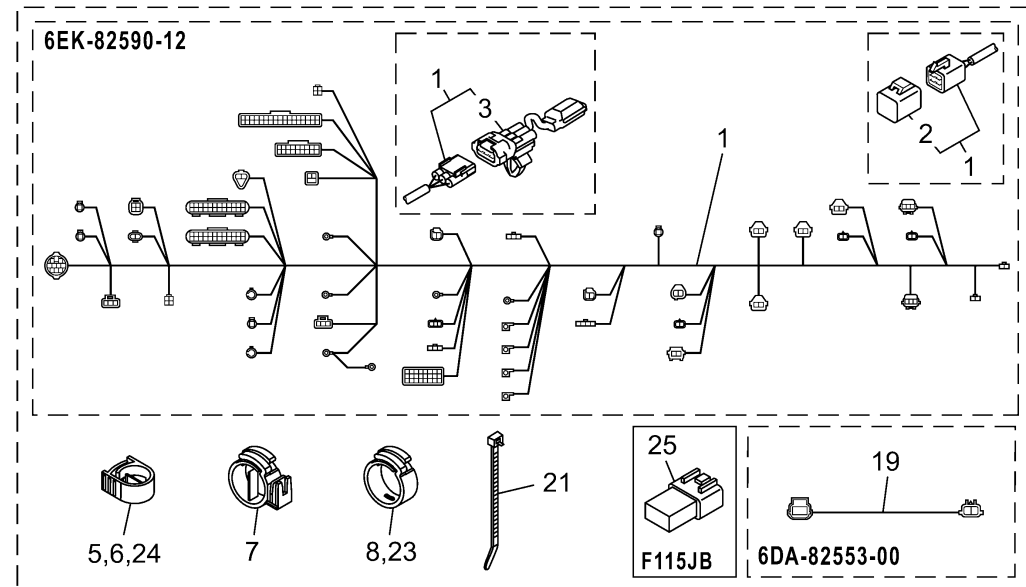


6EKA100-X200

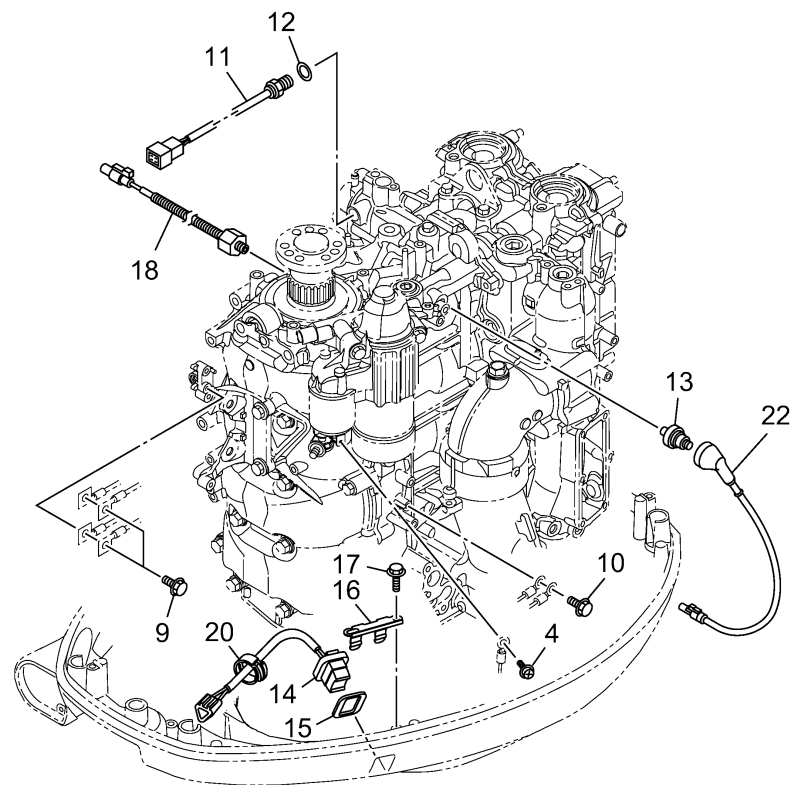
Ref No.	Part Number	Description	Qty	Remarks
1	6EK-82590-12-00	WIRE HARNESS ASSY	1	
2	6Y8-82582-11-00	. .CAP 1 (4PIN)	1	
3	6EK-81980-01-00	. .DIODE ASSY	1	
4	97985-04308-00	SCREW, WITH WASHER	1	
5	90464-18004-00	CLAMP	1	
6	90464-18004-00	CLAMP	1	
7	90464-22005-00	CLAMP	1	
8	90464-16001-00	CLAMP	1	
9	97E95-06516-00	BOLT, HEXAGON W/W DEEP RECESS	2	
10	97E95-06516-00	BOLT, HEXAGON W/W DEEP RECESS	1	
11	6CJ-85790-00-00	THERMOSENSOR ASSY	1	
12	90430-14115-00	.GASKET	1	
13	68V-82504-00-00	OIL PRESSURE SWITCH ASSY	1	
14	69J-82563-01-00	TRIM & TILT SWITCH ASSY	1	
15	69J-82587-01-00	GASKET	1	
16	69J-83614-00-00	BRACKET	1	
17	90109-06M86-00	BOLT	2	
18	6CJ-85780-02-00	SENSOR, KNOCK	1	
19	6DA-82553-00-00	EXTENSION, WIRE LEAD	1	
20	90464-16001-00	CLAMP	1	

CONTINUED ON NEXT FRAME >

# ELECTRICAL 5



Ref No.	Part Number	Description	Qty	Remarks
21	90465-13M18-00	CLAMP	1	
22	6EK-82553-11-00	EXTENSION, WIRE LEAD	1	
23	90464-16001-00	CLAMP	1	
24	90464-18004-00	CLAMP	1	
25	68V-82582-10-00	CAP 1 (2P)	0	FOR JET-DRIVE



6EKA100-X200