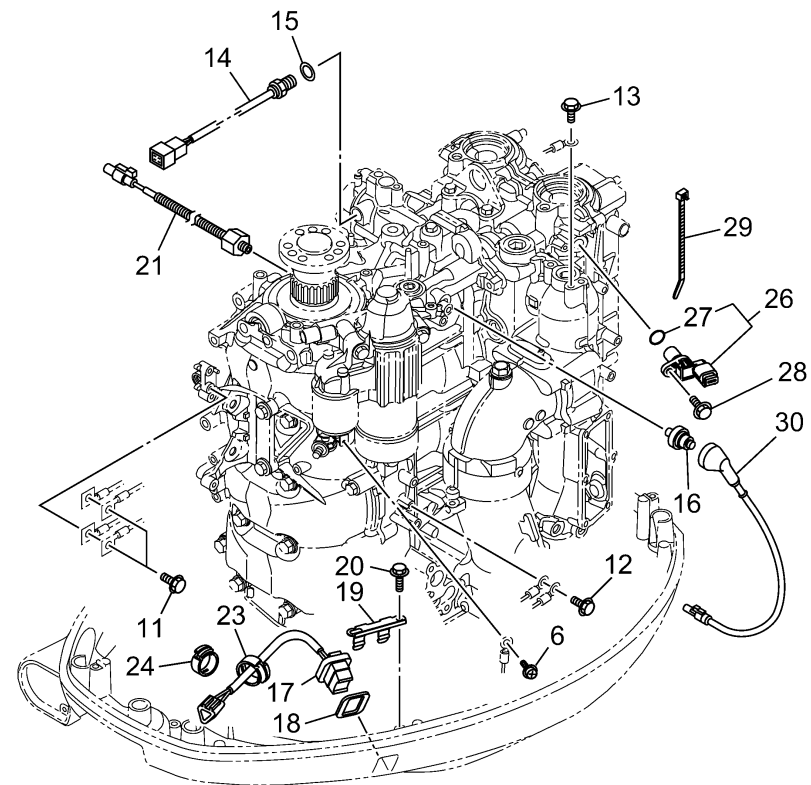
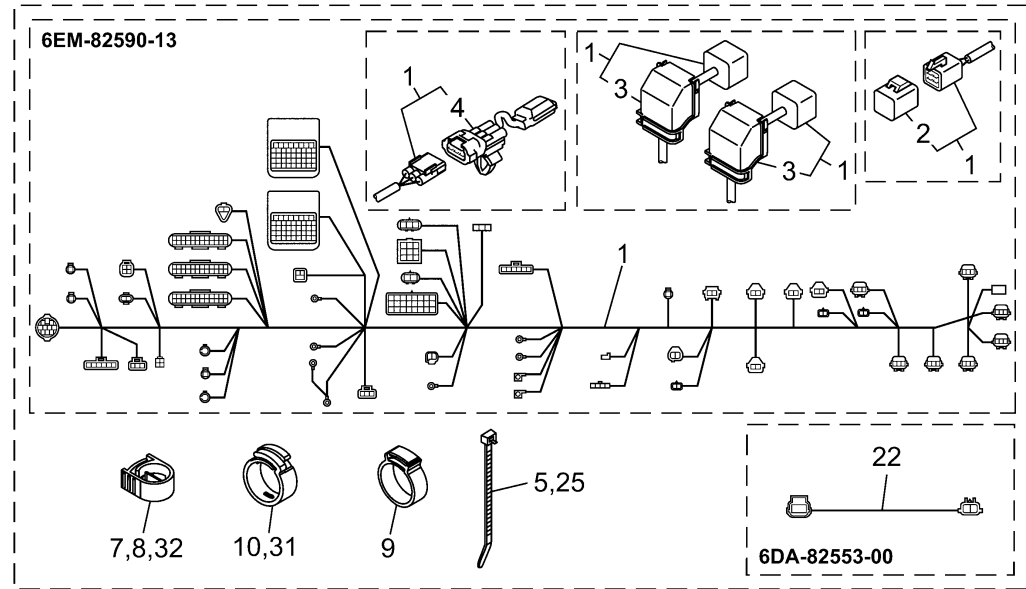


# ELECTRICAL 5

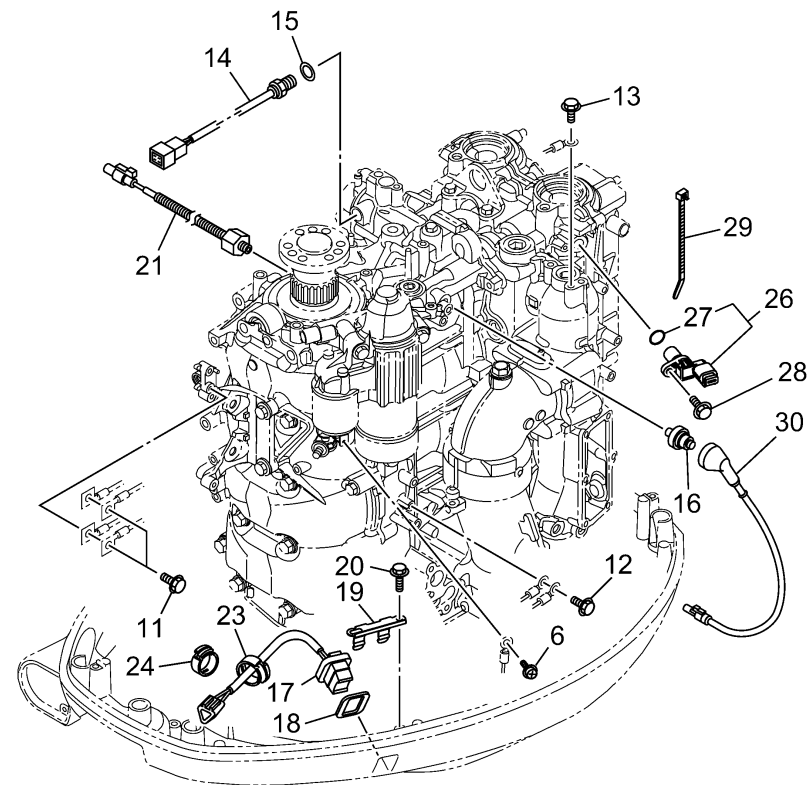
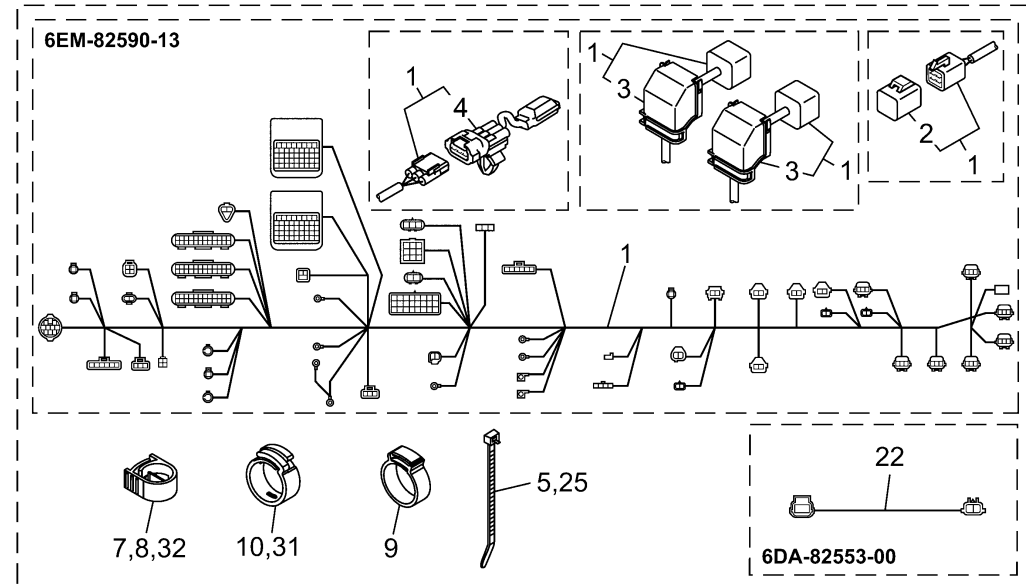


6FN9100-X200

Ref No.	Part Number	Description	Qty	Remarks
1	6EM-82590-13-00	WIRE HARNESS ASSY	1	
2	6Y8-82582-11-00	. .CAP 1 (4PIN)	1	
3	6EM-82599-00-00	. .COVER, CONNECTOR	2	
4	6EK-81980-01-00	. .DIODE ASSY	1	
5	90465-13M18-00	CLAMP	1	
6	97985-04308-00	SCREW, WITH WASHER	1	
7	90464-18004-00	CLAMP	1	
8	90464-18004-00	CLAMP	1	
9	90464-26001-00	CLAMP	1	
10	90464-16001-00	CLAMP	1	
11	97E95-06516-00	BOLT, HEXAGON W/W DEEP RECESS	2	
12	97E95-06516-00	BOLT, HEXAGON W/W DEEP RECESS	1	
13	97E95-06512-00	BOLT, HEXAGON W/W DEEP RECESS	1	
14	6CJ-85790-00-00	THERMOSENSOR ASSY	1	
15	90430-14115-00	.GASKET	1	
16	68V-82504-00-00	OIL PRESSURE SWITCH ASSY	1	
17	69J-82563-01-00	TRIM & TILT SWITCH ASSY	1	
18	69J-82587-01-00	GASKET	1	
19	69J-83614-00-00	BRACKET	1	
20	90109-06M86-00	BOLT	2	

CONTINUED ON NEXT FRAME >

# ELECTRICAL 5



6FN9100-X200

Ref No.	Part Number	Description	Qty	Remarks
21	6CJ-85780-02-00	SENSOR, KNOCK	1	
22	6DA-82553-00-00	EXTENSION, WIRE LEAD	1	
23	90464-16001-00	CLAMP	1	
24	90464-16001-00	CLAMP	1	
25	90465-13M18-00	CLAMP	1	
26	6P2-85896-00-00	SENSOR, CAM POSITION	1	
27	6P2-85075-00-00	..O-RING	1	
28	95D95-06016-00	BOLT, FLANGE DEEP RECESS	1	
29	90465-11M59-00	CLAMP	1	
30	6EK-82553-11-00	EXTENSION, WIRE LEAD	1	
31	90464-16001-00	CLAMP	1	
32	90464-18004-00	CLAMP	1	