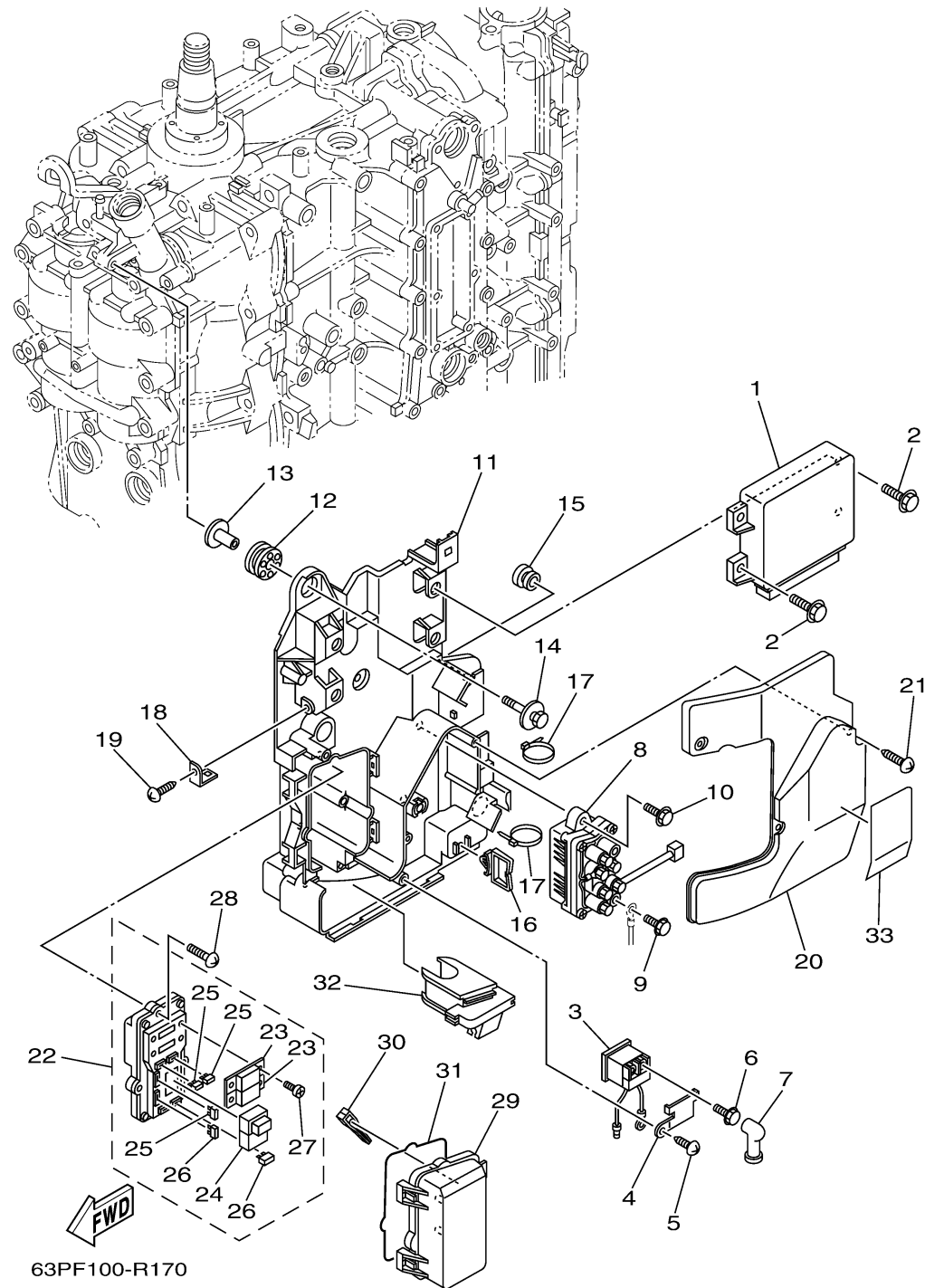


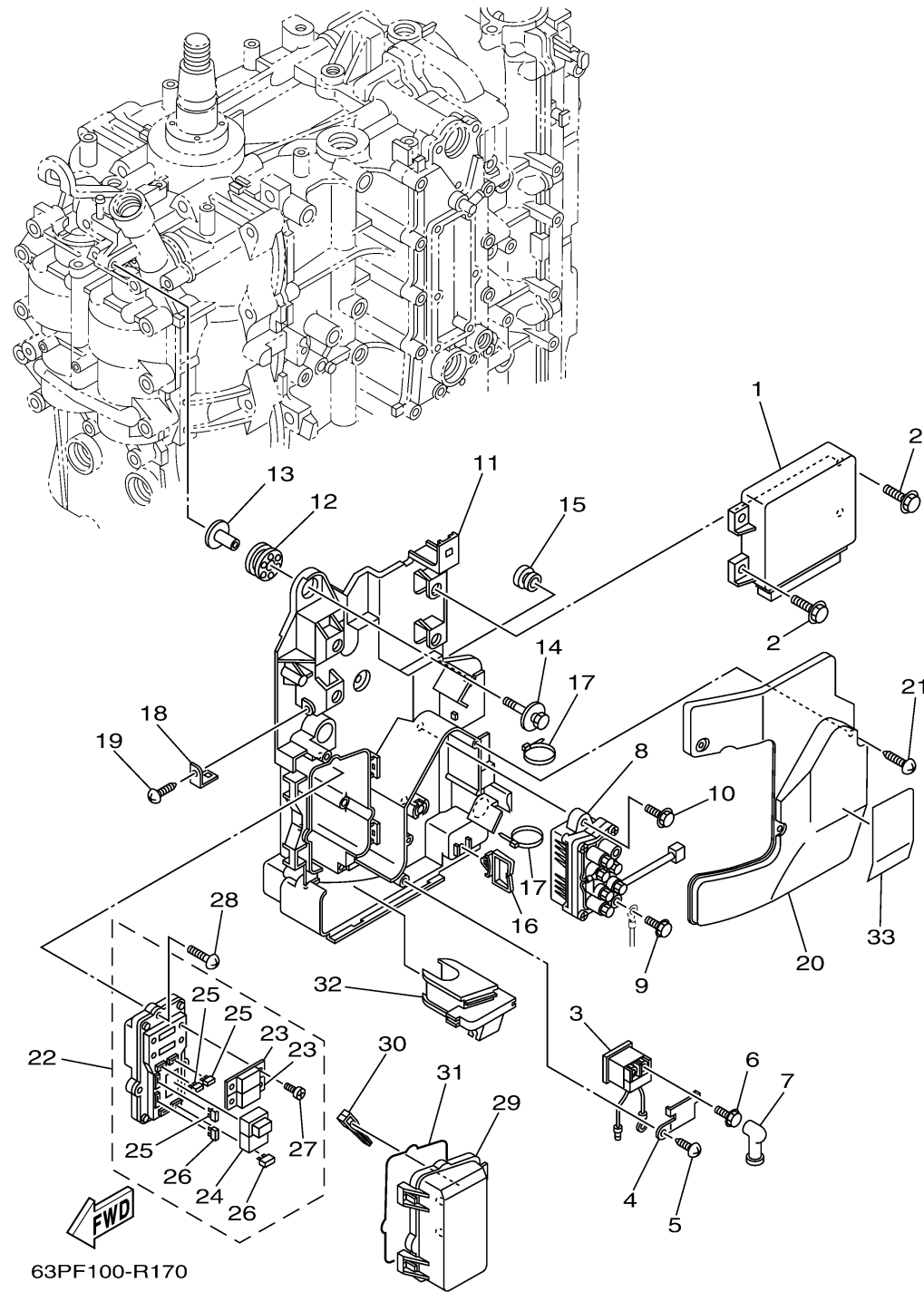
ELECTRICAL 2



Ref No.	Part Number	Description	Qty	Remarks
1	6MA-8591A-00-00	ENGINE CONTROL UNIT ASSY	1	
2	97E95-06516-00	BOLT, HEXAGON W/W DEEP RECESS	4	
3	68V-8194A-00-00	RELAY	1	
4	68V-81953-00-00	STAY, RELAY	1	
5	97780-60620-00	SCREW, TAPPING	1	
6	97E95-06610-00	BOLT, HEXAGON W/W DEEP RECESS	2	
7	6G5-82119-00-00	COVER, LEAD WIRE	2	
8	63P-W8195-00-00	RELAY ASSY	1	
9	97E95-06610-00	BOLT, HEXAGON W/W DEEP RECESS	2	
10	97513-06520-00	BOLT, WITH WASHER	2	
11	63P-81948-01-00	BRACKET	1	
12	68F-85516-01-00	SPACER	3	
13	90387-06176-00	COLLAR	3	
14	90119-06328-00	BOLT, WITH WASHER	3	
15	90480-10627-00	GROMMET	1	
16	90464-23199-00	CLAMP	1	
17	90465-13M18-00	CLAMP	3	
18	68V-85548-01-00	HOLDER	1	
19	97780-60620-00	SCREW, TAPPING	1	
20	63P-81942-00-00	COVER	1	

CONTINUED ON NEXT FRAME >

ELECTRICAL 2



Ref No.	Part Number	Description	Qty	Remarks
21	90169-05M00-00	SCREW, TRUSS HEAD TAPPING	3	
22	63P-82170-02-00	FUSE BOX ASSY	1	
23	63P-82151-00-00	. FUSE (50A)	2	
24	6AW-8195A-00-00	. RELAY ASSY	1	
25	67F-82151-00-00	. FUSE (20A)	3	
26	67F-82151-10-00	. FUSE (30A)	2	
27	68F-82846-00-00	. SCREW, PAN HEAD (M5)	4	
28	97780-50620-00	SCREW, TAPPING	3	
29	60V-85544-00-00	CASE	1	
30	67F-2812A-00-00	. PULLER, FUSE	1	
31	68F-82176-00-00	DAMPER	1	
32	63P-81336-01-00	GROMMET	1	
33	6MA-81919-00-00	GRAPHIC, REGULATOR	1	