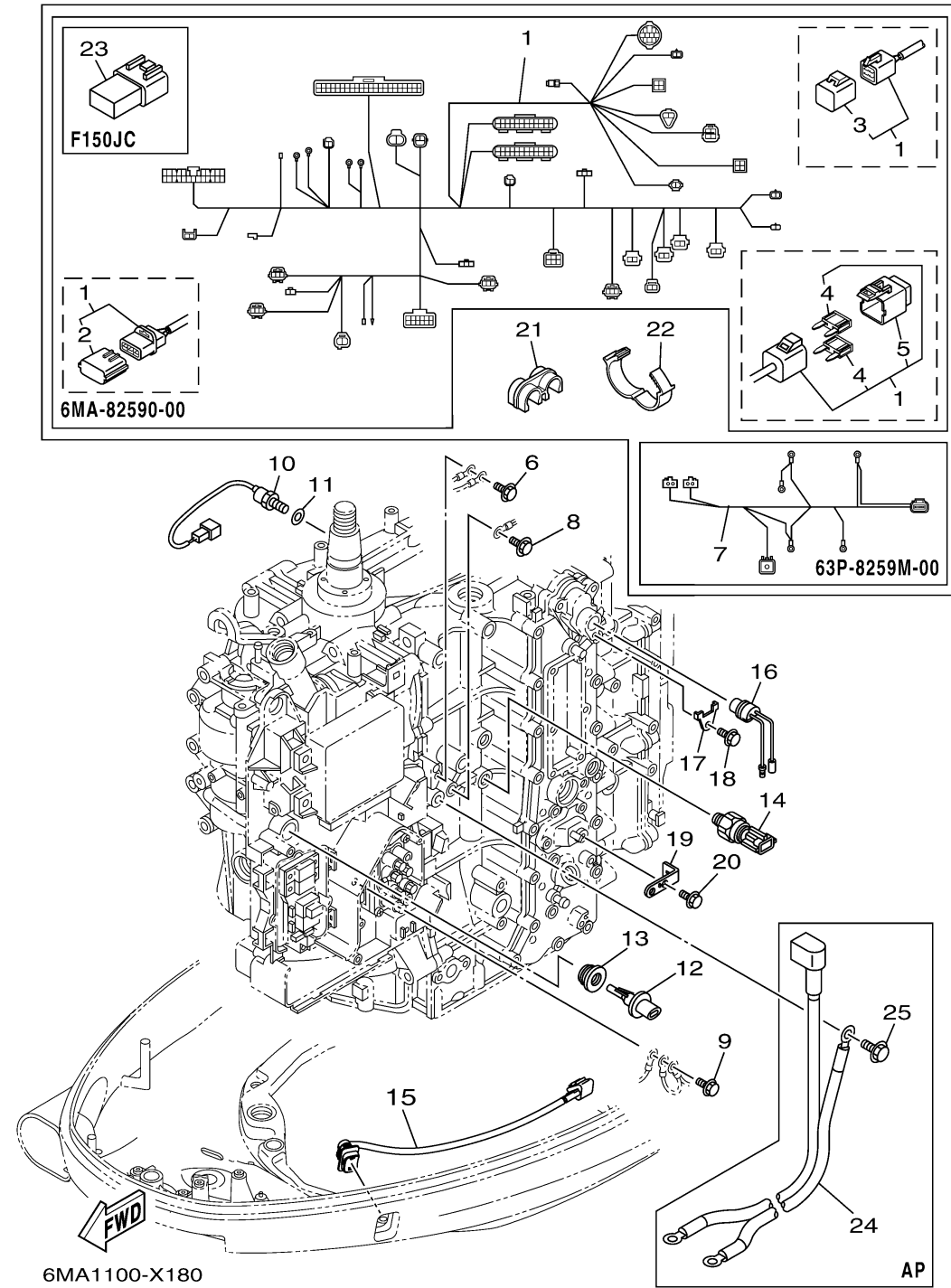


# ELECTRICAL 3



Ref No.	Part Number	Description	Qty	Remarks
1	6MA-82590-00-00	WIRE HARNESS ASSY	1	
2	6AW-82582-00-00	..CAP 1	2	
3	6Y8-82582-11-00	..CAP 1 (4PIN)	1	
4	67F-82151-20-00	..FUSE (5A)	2	
5	69J-8215B-00-00	..CAP (BROWN)	1	
6	97E95-06516-00	BOLT, HEXAGON W/W DEEP RECESS	1	
7	63P-8259M-00-00	WIRE HARNESS ASSY 2	1	
8	97E95-06516-00	BOLT, HEXAGON W/W DEEP RECESS	1	
9	97E95-06512-00	BOLT, HEXAGON W/W DEEP RECESS	1	
10	61A-85790-01-00	THERMOSENSOR ASSY	1	
11	92990-10600-00	WASHER, PLATE	1	
12	63P-85886-00-00	SENSOR, AIR TEMPERATURE	1	
13	63P-14435-00-00	GROMMET	1	
14	6AW-83651-01-00	SENDER, OIL PRESSURE	1	
15	6FM-82563-01-00	TRIM & TILT SWITCH ASSY	1	
16	6P2-82560-01-00	THERMO SWITCH ASSY	1	
17	6E9-82588-00-00	PLATE	1	
18	90109-06M80-00	BOLT	1	
19	6MA-8366P-00-00	BRACKET 4	1	
20	97E95-06512-00	BOLT, HEXAGON W/W DEEP RECESS	1	

CONTINUED ON NEXT FRAME >

# ELECTRICAL 3

Ref No.	Part Number	Description	Qty	Remarks
21	90464-12224-00	CLAMP	1	
22	90464-26001-00	CLAMP	1	
23	68V-82582-10-00	.CAP 1 (2P)	1	FOR JET-DRIVE
24	6DA-82105-02-00	BATTERY CABLE	1	AP
25	97E95-08516-00	BOLT, HEXAGON W/W DEEP RECESS	1	AP

