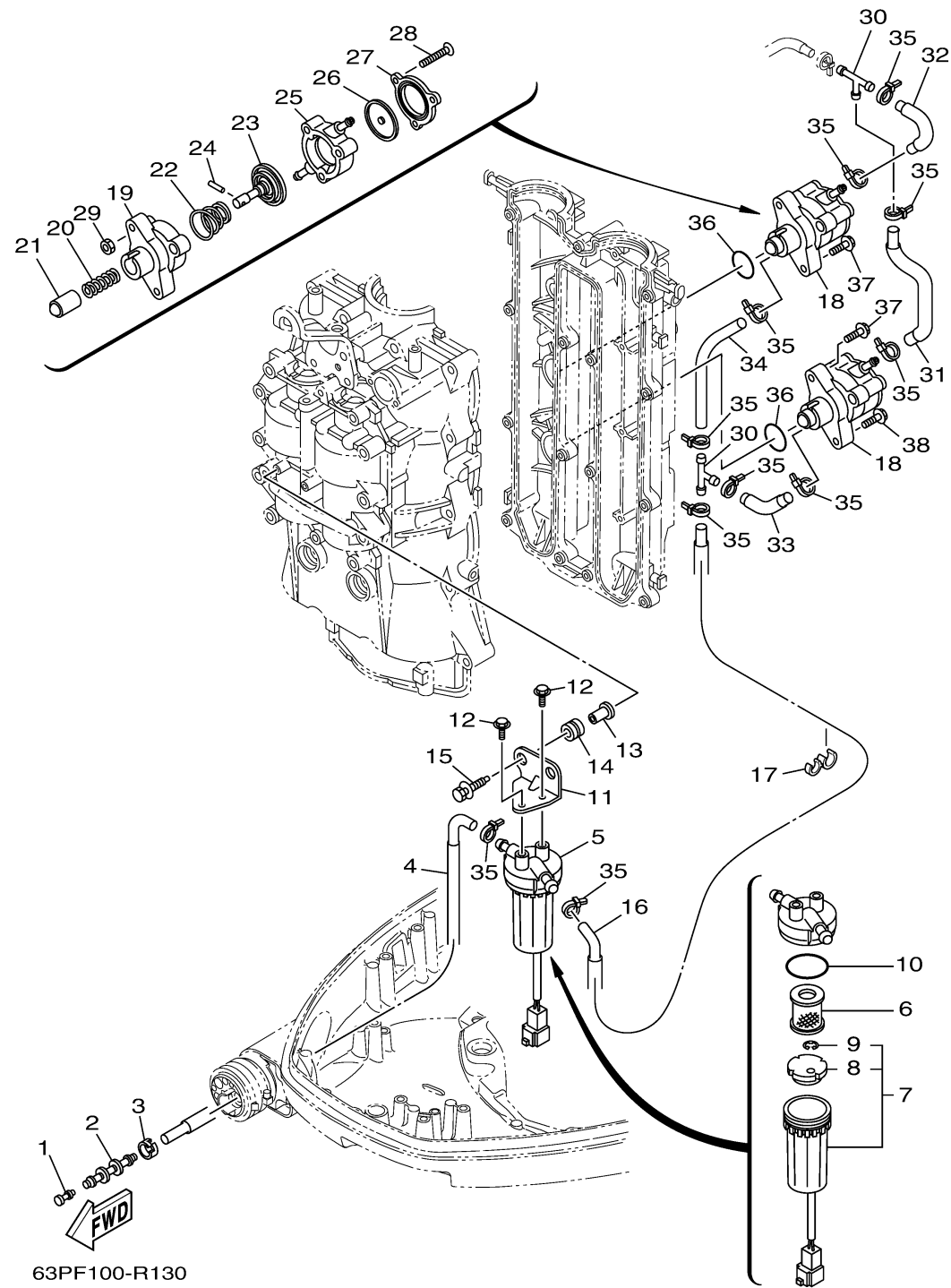


FUEL 1

Ref No.	Part Number	Description	Qty	Remarks
1	689-85547-01-00	DAMPER	1	
2	6AW-24377-01-00	PIPE, JOINT 2	1	
3	6E5-24351-51-00	BAND 1	1	
4	63P-24316-40-00	PIPE 6	1	
5	6P3-24560-04-00	FILTER ASSY	1	
6	6P3-24563-02-00	. .ELEMENT, FILTER	1	
7	6P3-24562-03-00	. .CUP, FILTER	1	
8	6P3-24469-00-00FLOAT, WATER LEVEL	1	
9	6P3-24519-00-00CLIP	1	
10	6P3-24564-00-00	. .GASKET	1	
11	63P-24566-00-00	BRACKET, FILTER	1	
12	97E95-06514-00	BOLT, HEXAGON W/W DEEP RECESS	2	
13	90387-06289-00	COLLAR	2	
14	90480-10M23-00	GROMMET	2	
15	90119-06309-00	BOLT, WITH WASHER	2	
16	63P-24311-20-00	PIPE, FUEL 1	1	
17	90464-13M34-00	CLAMP	1	
18	63P-24410-20-00	FUEL PUMP ASSY	2	
19	68V-24412-00-00	. .BODY 1	1	
20	68V-24454-00-00	. .SPRING	1	

CONTINUED ON NEXT FRAME >



FUEL 1

Ref No.	Part Number	Description	Qty	Remarks
21	63P-13131-00-00	..PLUNGER	1	
22	63P-24423-00-00	..SPRING, DIAPHRAGM	1	
23	68V-24411-00-00	..DIAPHRAGM	1	
24	68V-24374-00-00	..PIN	1	
25	63P-24413-00-00	..BODY 2	1	
26	68V-24471-10-00	..DIAPHRAGM	1	
27	63P-24414-00-00	..BODY 3	1	
28	68V-24444-00-00	..SCREW	3	
29	68V-24149-00-00	..NUT	3	
30	6E5-24378-00-00	PIPE, JOINT 3	2	
31	63P-24314-10-00	PIPE 4	1	
32	63P-24315-10-00	PIPE 5	1	
33	63P-24312-20-00	PIPE 2	1	
34	63P-24313-20-00	PIPE 3	1	
35	90465-11M10-00	CLAMP	11	
36	93210-30682-00	O-RING	2	
37	90119-06312-00	BOLT, WITH WASHER	3	
38	90119-06135-00	BOLT, WITH WASHER	1	