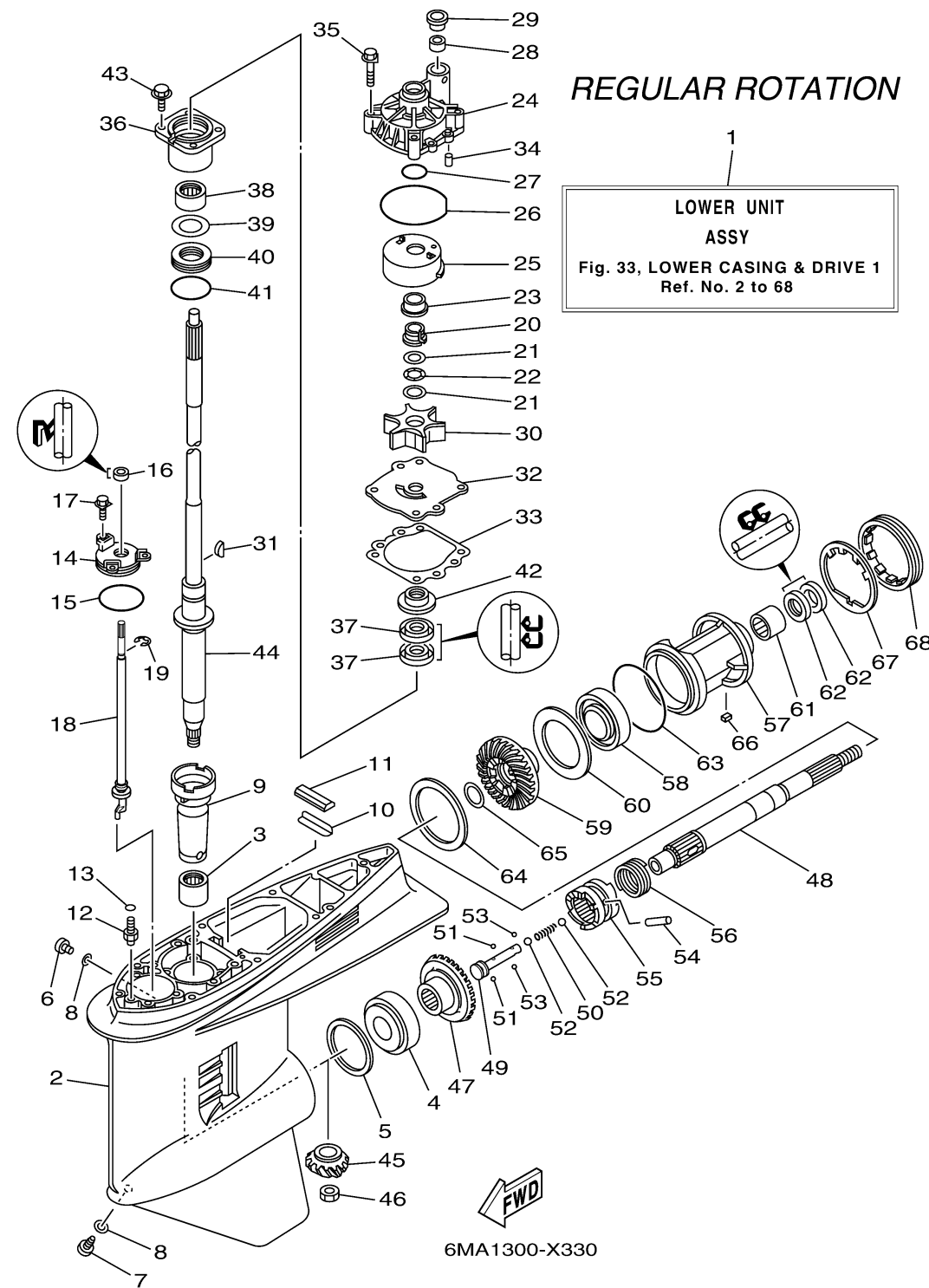


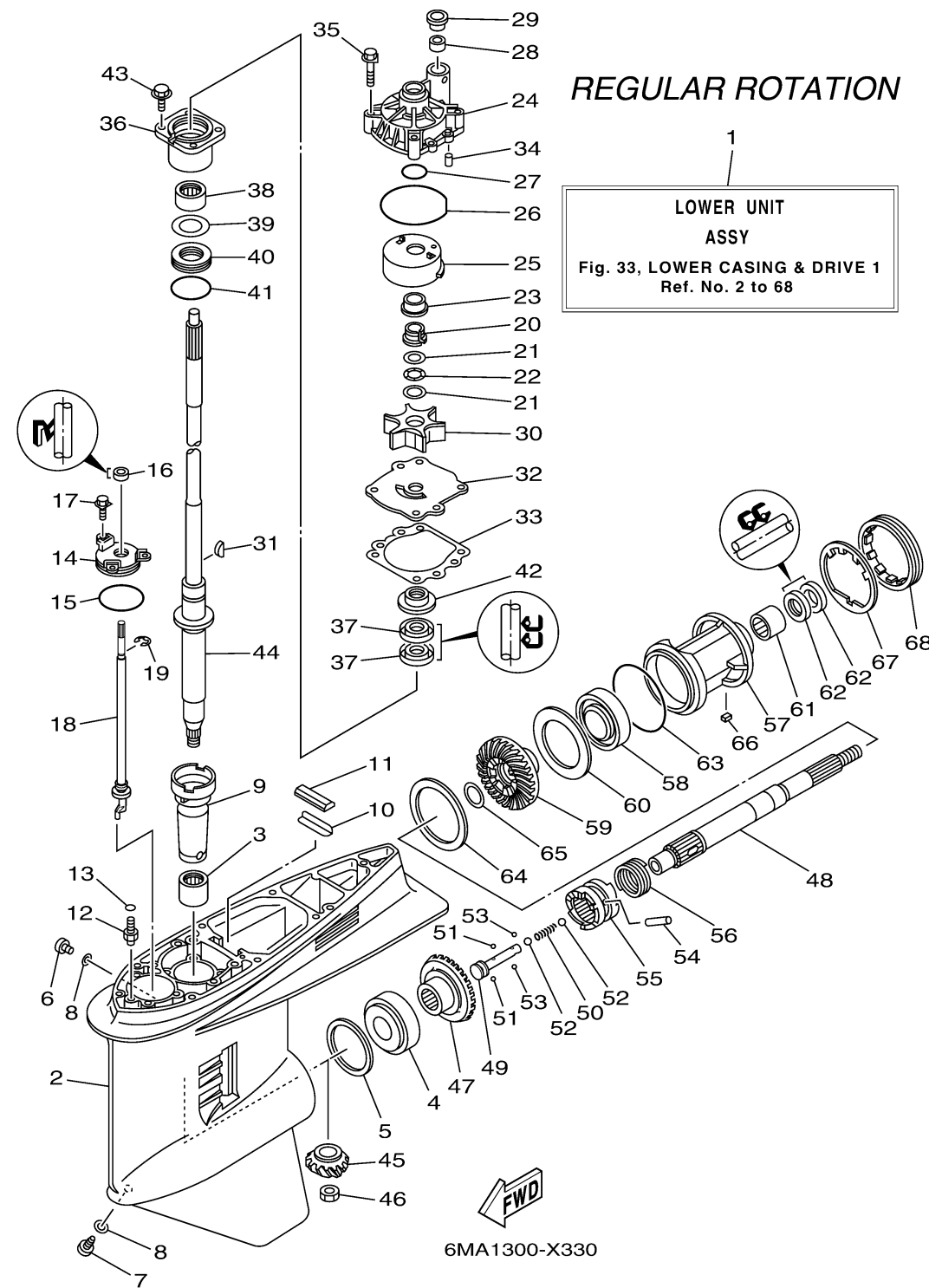
LOWER CASING DRIVE 1



Ref No.	Part Number	Description	Qty	Remarks
1	63P-45300-07-8D	LOWER UNIT ASSY	1	GRAY, L(20.3"), RH
1	63P-45300-07-CE	LOWER UNIT ASSY	0	WHITE, L(20.3"), RH
1	63P-45300-17-8D	LOWER UNIT ASSY	0	GRAY, X(25.2"), RH
1	63P-45300-17-CE	LOWER UNIT ASSY	0	WHITE, X(25.2"), RH
1	63P-45300-17-CJ	LOWER UNIT ASSY	0	WARM WHITE, X(25.2"), RH
2	6J9-45301-07-CE	CASING, LOWER	0	WHITE
2	6J9-45301-07-8D	CASING, LOWER	1	GRAY
2	6J9-45301-07-CJ	CASING, LOWER	0	WARM WHITE
3	93311-928U5-00	BEARING	1	
4	93332-000V3-00	BEARING	1	
5	6G5-45567-01-00	SHIM (T:0.10MM)	1	UR
5	6G5-45567-10-00	SHIM (T:0.12MM)	1	UR
5	6G5-45567-20-00	SHIM (T:0.15MM)	1	UR
5	6G5-45567-30-00	SHIM (T:0.18MM)	1	UR
5	6G5-45567-40-00	SHIM (T:0.30MM)	1	UR
5	6G5-45567-50-00	SHIM (T:0.40MM)	1	UR
5	6G5-45567-60-00	SHIM (T:0.50MM)	1	UR
6	90340-08002-00	PLUG, STRAIGHT SCREW	1	
7	688-45341-10-00	PLUG, DRAIN	1	
8	90430-08003-00	.GASKET	2	

CONTINUED ON NEXT FRAME >

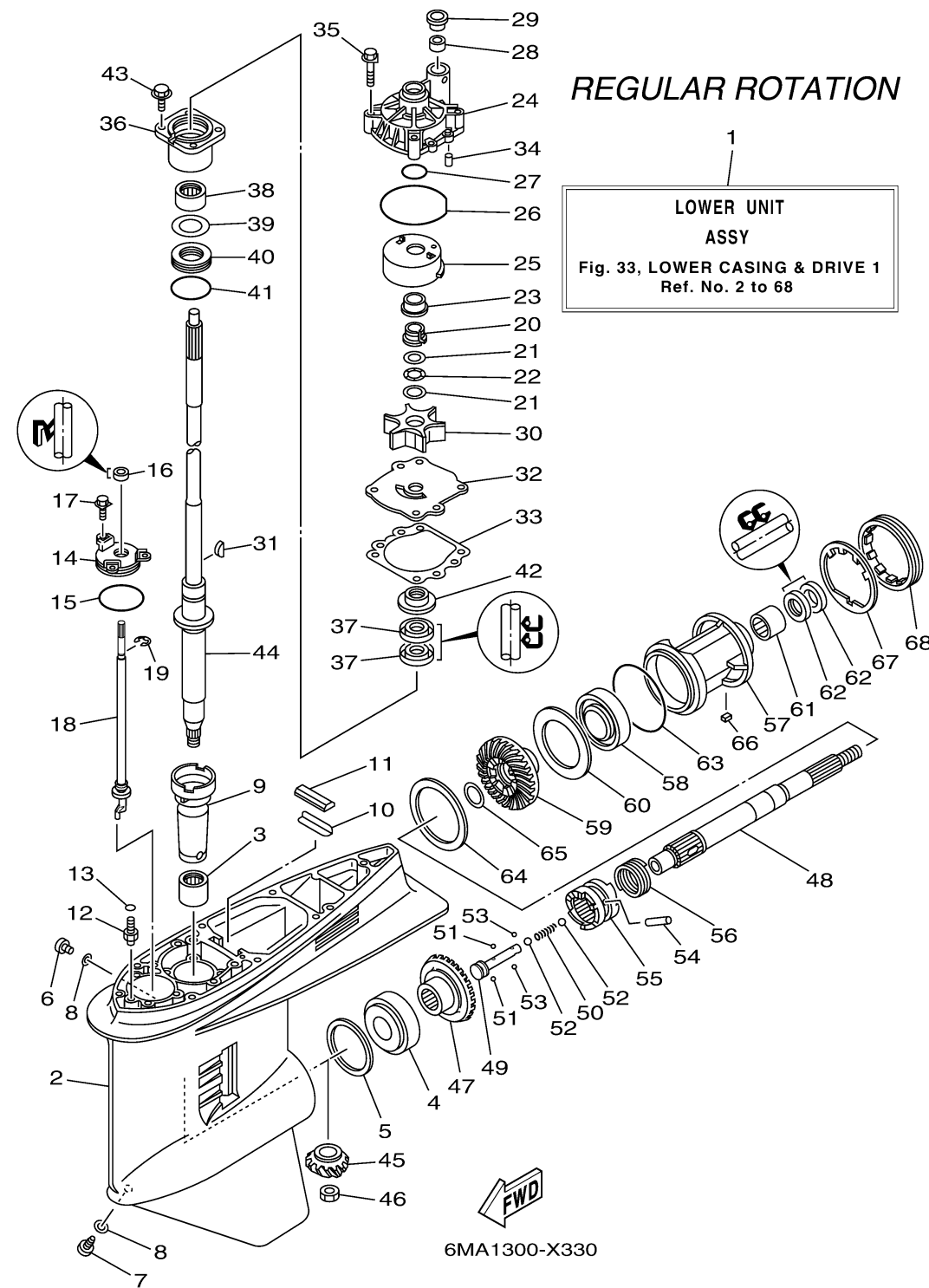
LOWER CASING DRIVE 1



Ref No.	Part Number	Description	Qty	Remarks
9	6G5-45536-01-00	SLEEVE, DRIVE SHAFT	1	
10	663-45376-00-00	GUIDE, SEAL DAMPER	1	
11	688-45375-00-00	DAMPER, SEAL	1	
12	63P-45378-00-00	NIPPLE, HOSE	1	
13	93210-07003-00	O-RING	1	
14	6E5-45321-00-00	PLATE	1	
15	93210-58144-00	.O-RING	1	
16	93106-09014-00	.OIL SEAL	1	
17	90119-06286-00	BOLT, WITH WASHER	3	
18	63P-44150-01-00	SHIFT CAM ASSY	1	L(20.3"), RH
18	63P-44150-11-00	SHIFT CAM ASSY	0	X(25.2"), RH
19	99001-08600-00	CIRCLIP	1	
20	61A-45538-00-00	SPACER 1	1	
21	90201-22M01-00	WASHER, PLATE	2	
22	90206-22M19-00	WASHER, WAVE	1	
23	61A-45527-00-00	COLLAR, DRIVE SHAFT	1	
24	61A-44311-01-00	HOUSING, WATER PUMP	1	
25	61A-44322-02-00	.INSERT, CARTRIDGE	1	
26	93210-86M38-00	.O-RING	1	
27	93210-37160-00	.O-RING	1	

CONTINUED ON NEXT FRAME >

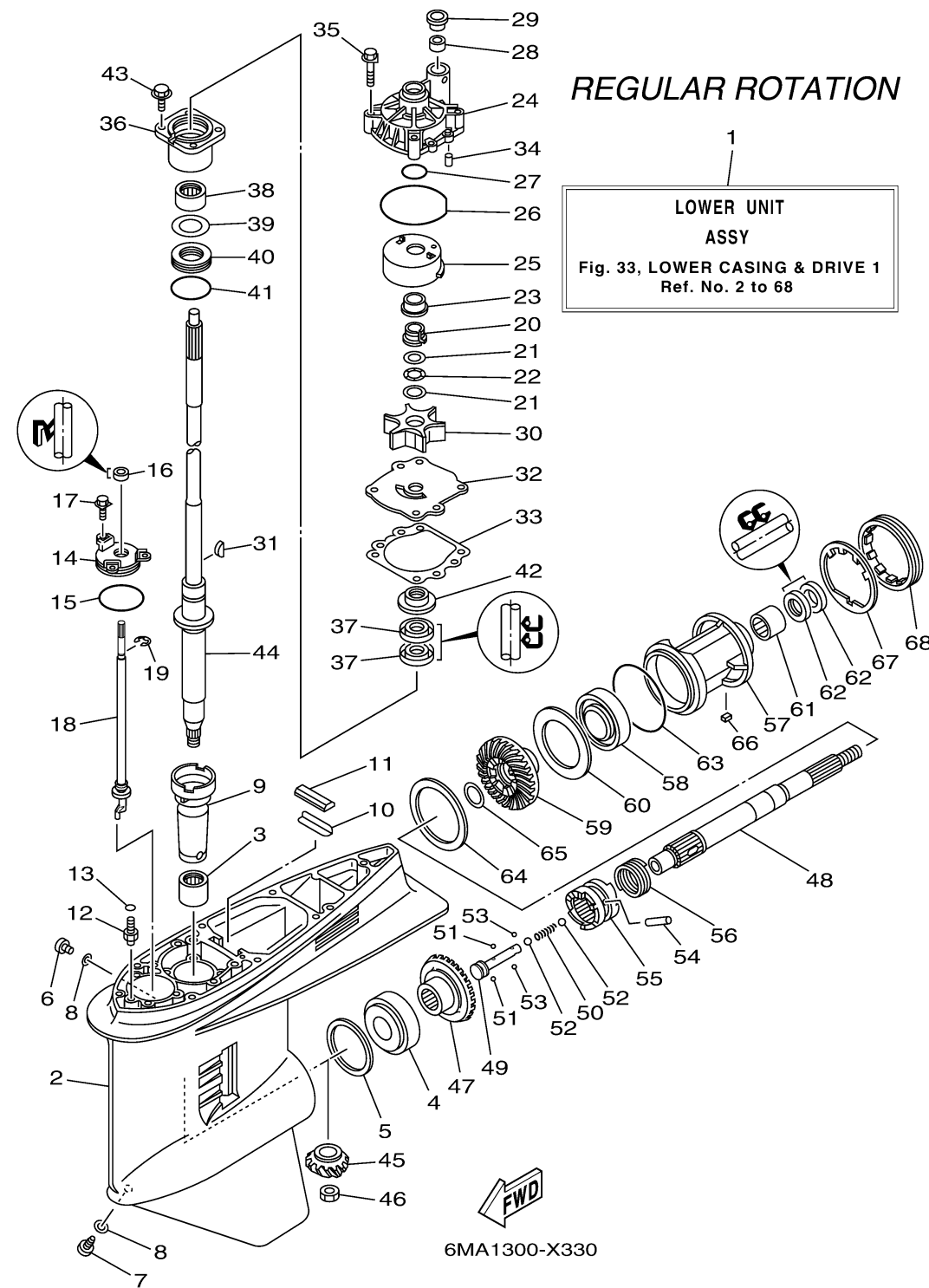
LOWER CASING DRIVE 1



Ref No.	Part Number	Description	Qty	Remarks
28	6E5-44365-01-00	DAMPER, WATER SEAL 1	1	
29	6E5-44312-00-00	COVER, WATER PUMP HOUSING	1	
30	6E5-44352-01-00	.IMPELLER	1	
31	90280-04M05-00	.KEY, WOODRUFF	1	
32	6G5-44323-01-00	.OUTER PLATE, CARTRIDGE	1	
33	6E5-44315-A0-00	.GASKET, WATER PUMP	1	
34	93606-12019-00	.PIN, DOWEL	2	
35	90119-08191-00	.BOLT, WITH WASHER	4	
36	6E5-45331-00-9S	HOUSING, BEARING	1	
37	93101-28M16-00	.OIL SEAL	2	
38	93317-330U2-00	BEARING	1	
39	6E5-45587-01-00	SHIM (T:0.10MM)	1	UR
39	6E5-45587-10-00	SHIM (T:0.12MM)	1	UR
39	6E5-45587-20-00	SHIM (T:0.15MM)	1	UR
39	6E5-45587-30-00	SHIM (T:0.18MM)	1	UR
39	6E5-45587-40-00	SHIM (T:0.30MM)	1	UR
39	6E5-45587-50-00	SHIM (T:0.40MM)	1	UR
39	6E5-45587-60-00	SHIM (T:0.50MM)	1	UR
40	93341-930V2-00	BEARING	1	
41	93210-55M14-00	.O-RING	1	

CONTINUED ON NEXT FRAME >

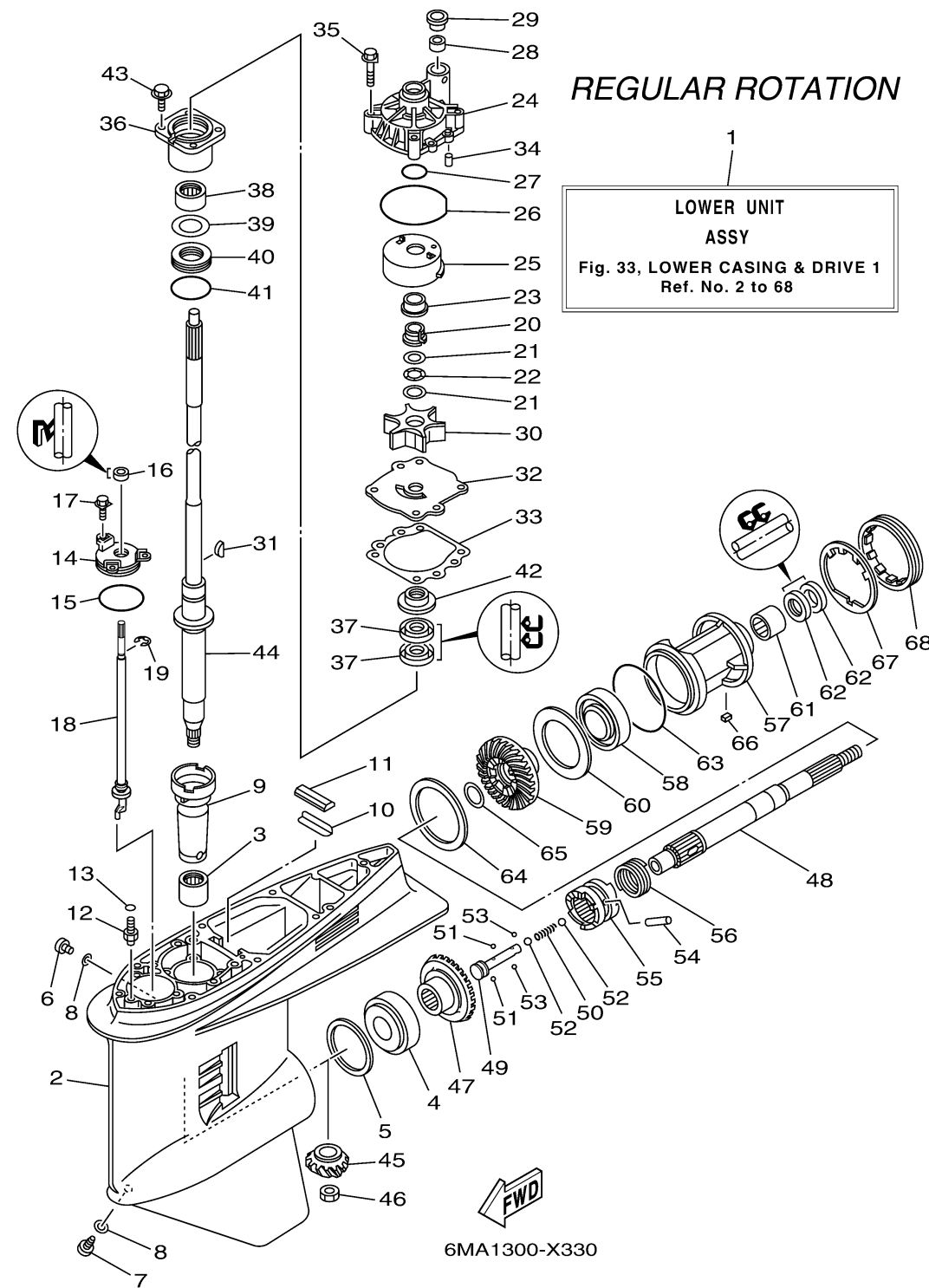
LOWER CASING DRIVE 1



Ref No.	Part Number	Description	Qty	Remarks
42	6E5-45344-00-00	COVER, OIL SEAL	1	
43	97E95-08525-00	BOLT, HEXAGON W/W DEEP RECESS	4	
44	63P-45501-11-00	DRIVE SHAFT COMP.	0	X(25.2")
44	63P-45501-01-00	DRIVE SHAFT COMP.	1	L(20.3")
45	63P-45551-00-00	PINION (14T)	1	
46	90170-16M01-00	NUT	1	
47	6EH-45560-00-00	GEAR 1 (28T)	1	
48	6J9-45611-01-00	SHAFT, PROPELLER	1	
49	6E5-45634-02-00	SLIDE, SHIFT	1	
50	90501-16M37-00	SPRING, COMPRESSION	1	
51	93507-32009-00	.BALL	2	
52	93511-32017-00	BALL	2	
53	93503-16003-00	.BALL	2	
54	90250-08M07-00	PIN, STRAIGHT	1	
55	6DA-45631-01-00	CLUTCH, DOG	1	
56	6E5-45633-01-00	RING, CROSS PIN	1	
57	6J9-45332-00-CA	HOUSING, BEARING	1	
58	93306-209U0-00	BEARING	1	
59	6EH-45571-00-00	GEAR 2 (28T)	1	
60	6G5-45576-10-00	WASHER, THRUST 2	1	

CONTINUED ON NEXT FRAME >

LOWER CASING DRIVE 1



Ref No.	Part Number	Description	Qty	Remarks
61	93315-43061-00	BEARING	1	
62	93101-30M17-00	.OIL SEAL	2	
63	93210-97M55-00	.O-RING	1	
64	6G5-45577-02-00	SHIM (T:0.10MM)	1	UR
64	6G5-45577-10-00	SHIM (T:0.12MM)	1	UR
64	6G5-45577-20-00	SHIM (T:0.15MM)	1	UR
64	6G5-45577-30-00	SHIM (T:0.18MM)	1	UR
64	6G5-45577-40-00	SHIM (T:0.30MM)	1	UR
64	6G5-45577-50-00	SHIM (T:0.40MM)	1	UR
64	6G5-45577-60-00	SHIM (T:0.50MM)	1	UR
65	90201-30M92-00	WASHER, PLATE	1	
66	90282-04M00-00	KEY, STRAIGHT	1	
67	6G5-45383-01-00	WASHER, CLAW	1	
68	6G5-45384-02-00	NUT	1	