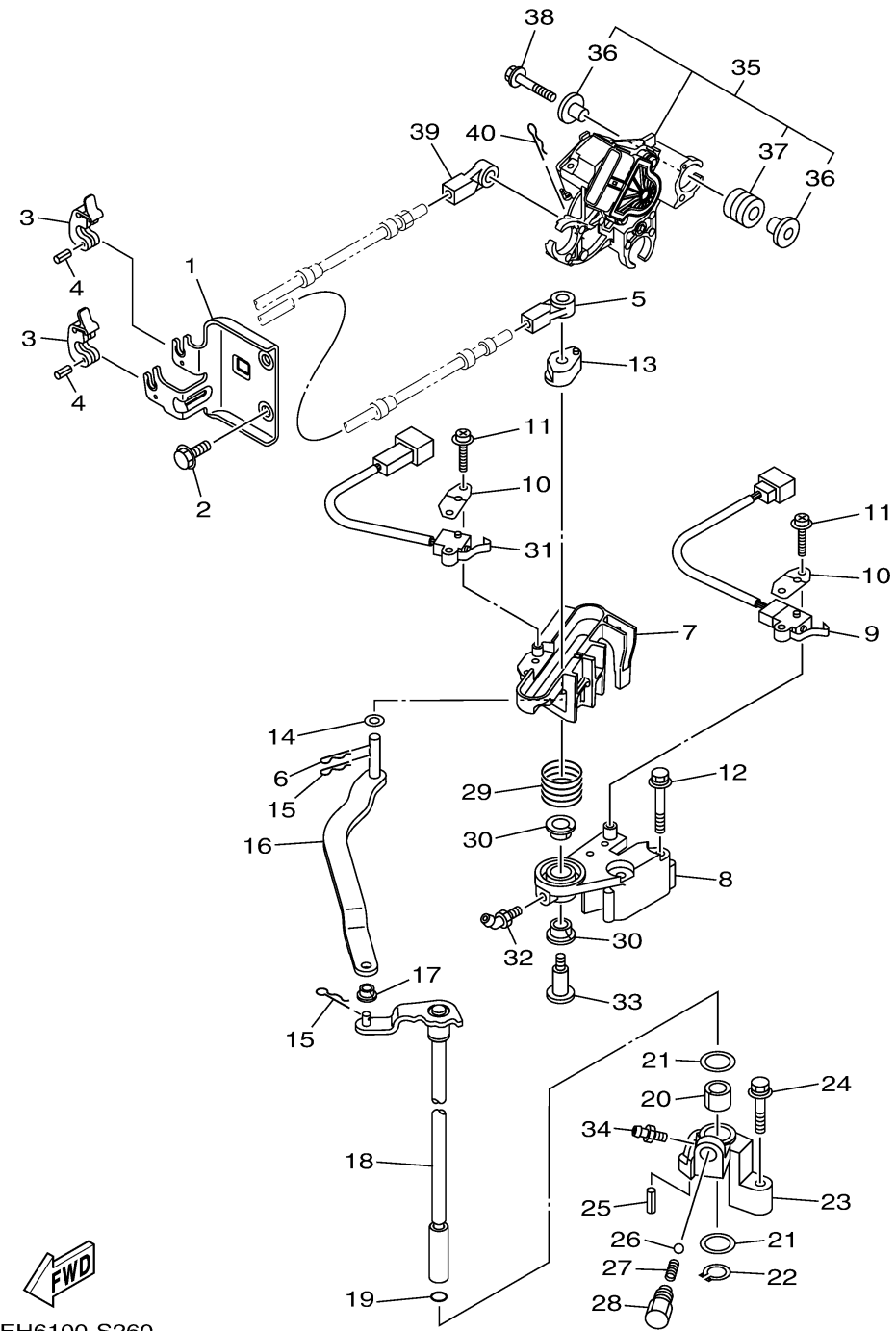


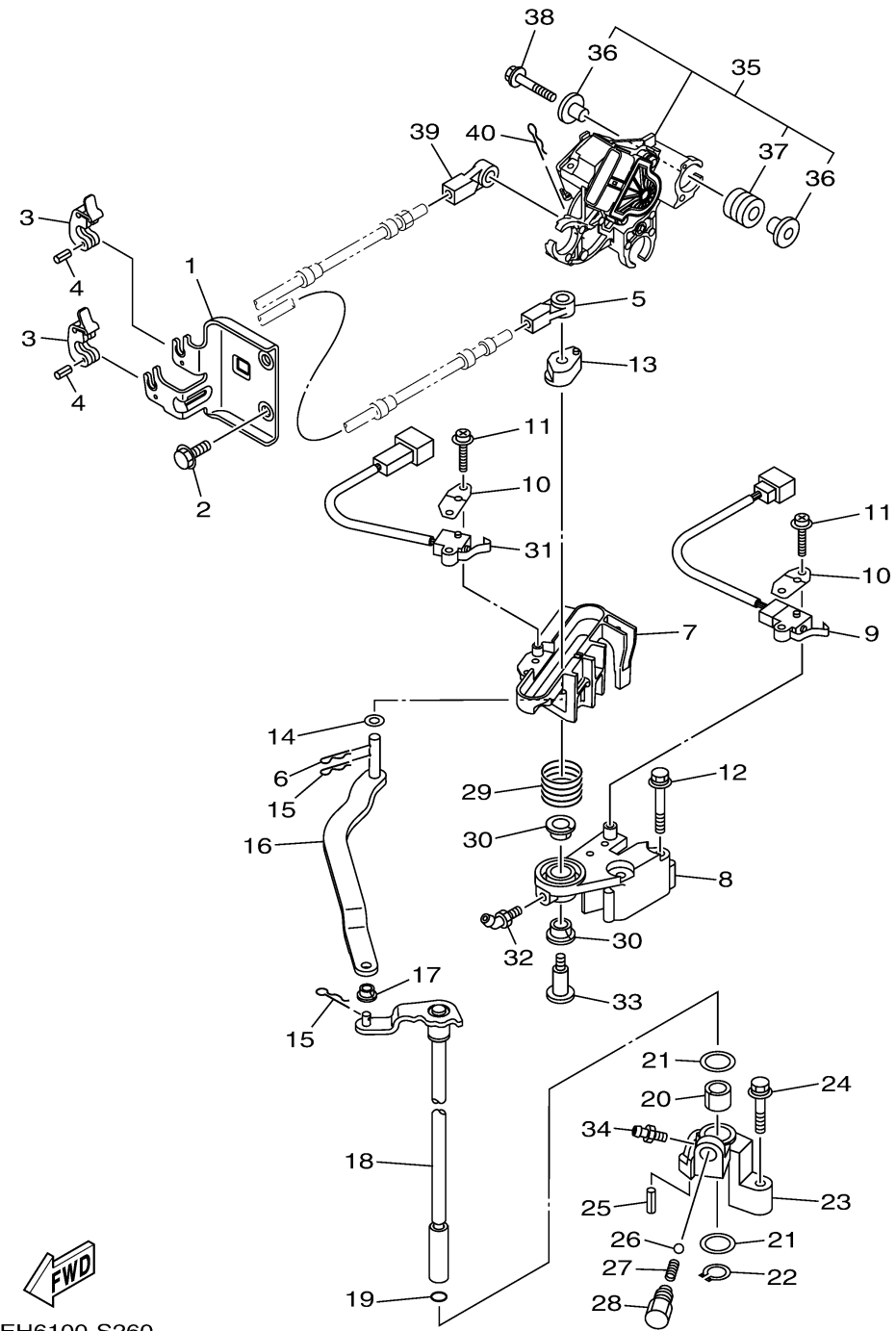
CONTROL



Ref No.	Part Number	Description	Qty	Remarks
1	6DA-48531-00-00	BRACKET, REMOTE CONTROL 1	1	
2	95D95-08020-00	BOLT, FLANGE DEEP RECESS	2	
3	6E5-48538-00-00	CLAMP, CABLE	2	
4	91690-30010-00	PIN, SPRING	2	
5	6E5-48344-00-00	CABLE END, REMOTE CONTROL	1	
6	90468-18008-00	CLIP	1	
7	6DA-44176-00-00	BRACKET	1	
8	63P-44117-01-00	BRACKET	1	
9	69J-8259F-00-00	SWITCH ASSY	1	
10	61A-82588-01-00	PLATE	2	
11	97985-04116-00	SCREW, WITH WASHER	4	
12	97E95-06550-00	BOLT, HEXAGON W/W DEEP RECESS	2	
13	63P-44122-00-00	BUSHING, SHIFT ROD LEVER	1	
14	90202-08M20-00	WASHER, PLATE	1	
15	90468-18008-00	CLIP	2	
16	6DA-44121-00-00	LEVER, SHIFT ROD	1	
17	90386-06M12-00	BUSH	1	
18	6DA-44120-02-00	HANDLE GEAR SHIFT ASSY	1	
19	93210-09165-00	O-RING	1	
20	90386-16M66-00	BUSH	1	

CONTINUED ON NEXT FRAME >

CONTROL



6EH6100-S260

Ref No.	Part Number	Description	Qty	Remarks
21	90202-16061-00	WASHER, PLATE	2	
22	93410-16006-00	CIRCLIP	1	
23	63P-44118-00-00	BRACKET	1	
24	97E75-06535-00	BOLT, HEXAGON W/W DEEP RECESS	1	
25	91690-30010-00	PIN, SPRING	1	
26	93501-04M02-00	BALL	1	
27	90501-12082-00	SPRING, COMPRESSION	1	
28	648-42715-00-00	BUSHING 2	1	
29	90508-20M31-00	SPRING, TORSION	1	
30	90386-12069-00	BUSH	2	
31	60V-8259F-01-00	SWITCH ASSY	1	
32	93700-06M01-00	NIPPLE, GREASE	1	
33	90109-08019-00	BOLT	1	
34	93700-06M03-00	NIPPLE, GREASE	1	
35	6DA-8A410-02-00	SENSOR UNIT	1	
36	69J-13716-00-00	. .COLLAR	6	
37	6CB-13593-00-00	. DAMPER	3	
38	90119-06297-00	BOLT, WITH WASHER	3	
39	6E5-48344-00-00	CABLE END, REMOTE CONTROL	1	
40	90468-18008-00	CLIP	1	