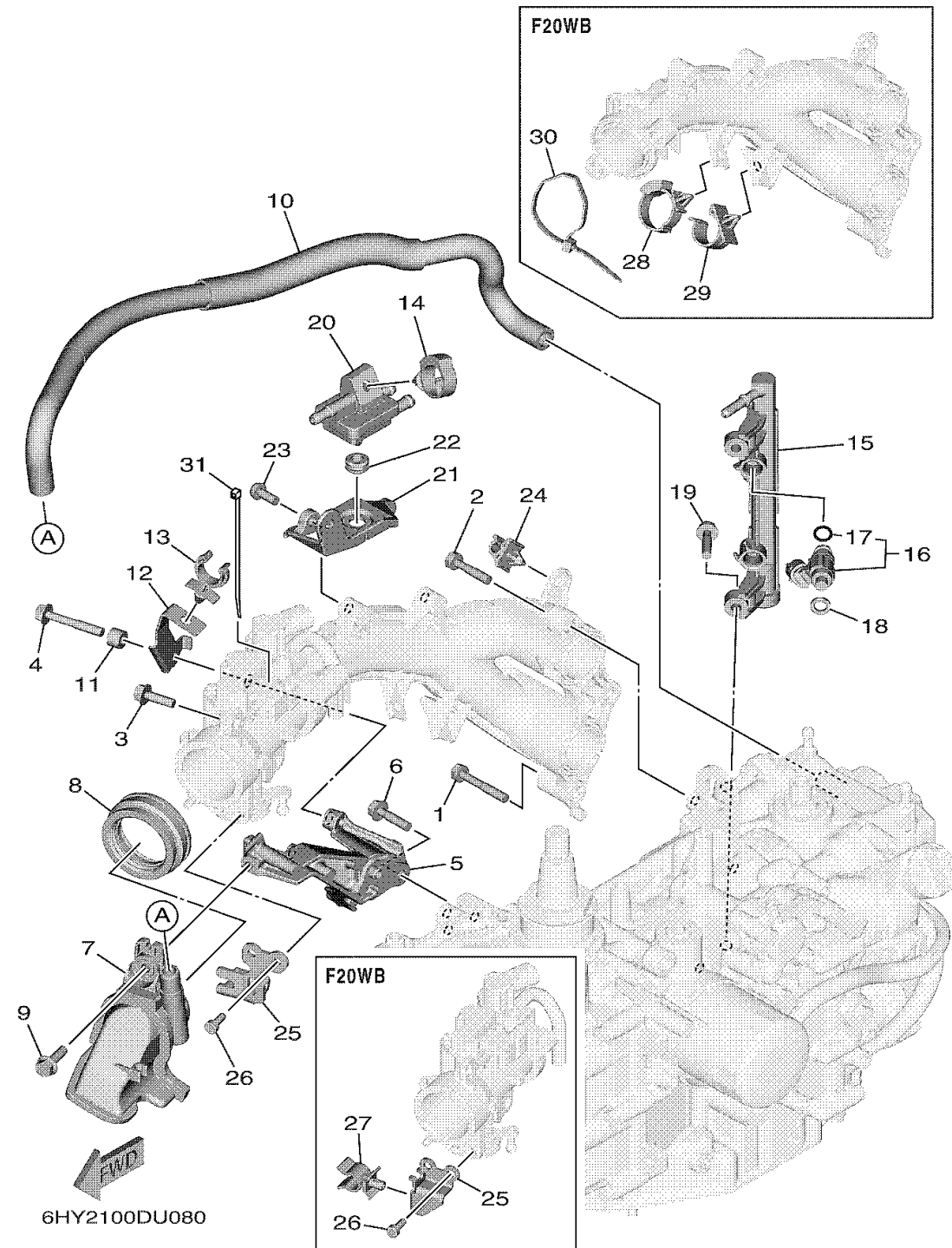


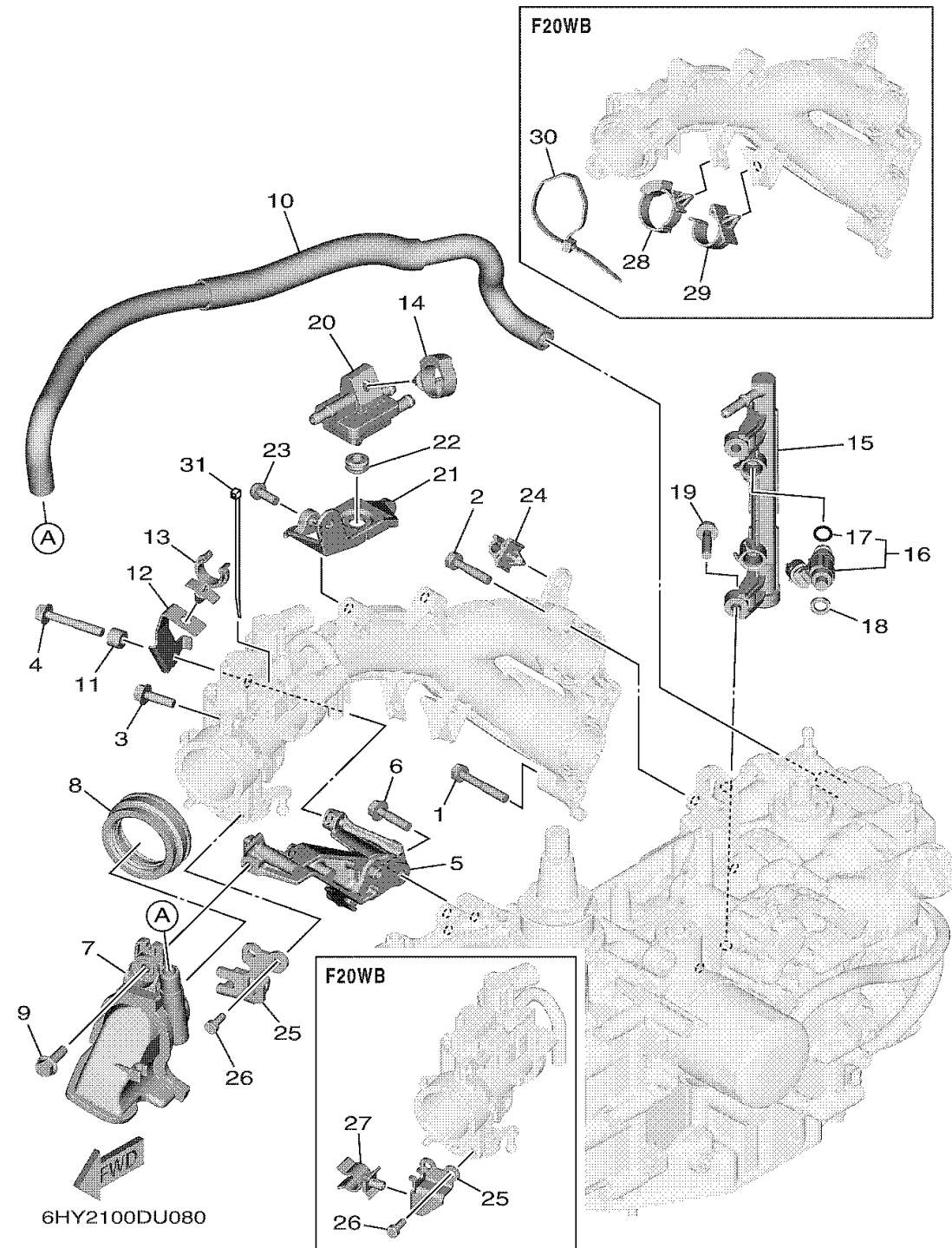
INTAKE 2



Ref No.	Part Number	Description	Qty	Remarks
1	90119-06MA6-00	BOLT, WITH WASHER	1	
2	90119-06MA4-00	BOLT, WITH WASHER	2	
3	95D95-06020-00	BOLT, FLANGE DEEP RECESS	2	
4	95D95-06040-00	BOLT, FLANGE DEEP RECESS	1	
5	6FM-13152-01-00	STAY 2	1	
6	95D95-06025-00	BOLT, FLANGE DEEP RECESS	3	
7	6FM-14440-10-00	SILENCER ASSY, INTAKE	1	
8	6FM-1441J-00-00	PIPE, SILENCER	1	
9	95D95-06020-00	BOLT, FLANGE DEEP RECESS	1	
10	6FM-15373-00-00	PIPE, BREATHER	1	
11	90387-06318-00	COLLAR	1	
12	6FM-13782-00-00	STAY	1	
13	90464-16240-00	CLAMP	1	
14	90464-20181-00	CLAMP	1	
15	6FM-13161-01-00	PIPE, DELIVERY 1	1	
16	6FM-13761-10-00	INJECTOR	2	
17	68V-1416A-00-00	. .O-RING	1	
18	6FM-13766-00-00	RUBBER, INJECTOR	2	
19	95D95-06025-00	BOLT, FLANGE DEEP RECESS	2	
20	6FM-2417F-00-00	SEPARATOR	1	

CONTINUED ON NEXT FRAME >

INTAKE 2



Ref No.	Part Number	Description	Qty	Remarks
21	6FM-2419F-00-00	BRACKET, CANISTOR	1	
22	90480-13M24-00	GROMMET	1	
23	97980-06216-00	SCREW, WITH WASHER	2	
24	90464-07259-00	CLAMP	1	
25	6FM-14497-00-00	STAY, THROTTLE WIRE	1	
25	6FM-82389-00-00	PLATE 2	0	
26	91380-05012-00	BOLT	2	
27	90464-12015-00	CLAMP	0	
28	90464-12183-00	CLAMP	0	
29	90464-20006-00	CLAMP	0	
30	90465-15011-00	CLAMP	0	
31	90465-11M59-00	CLAMP	1	