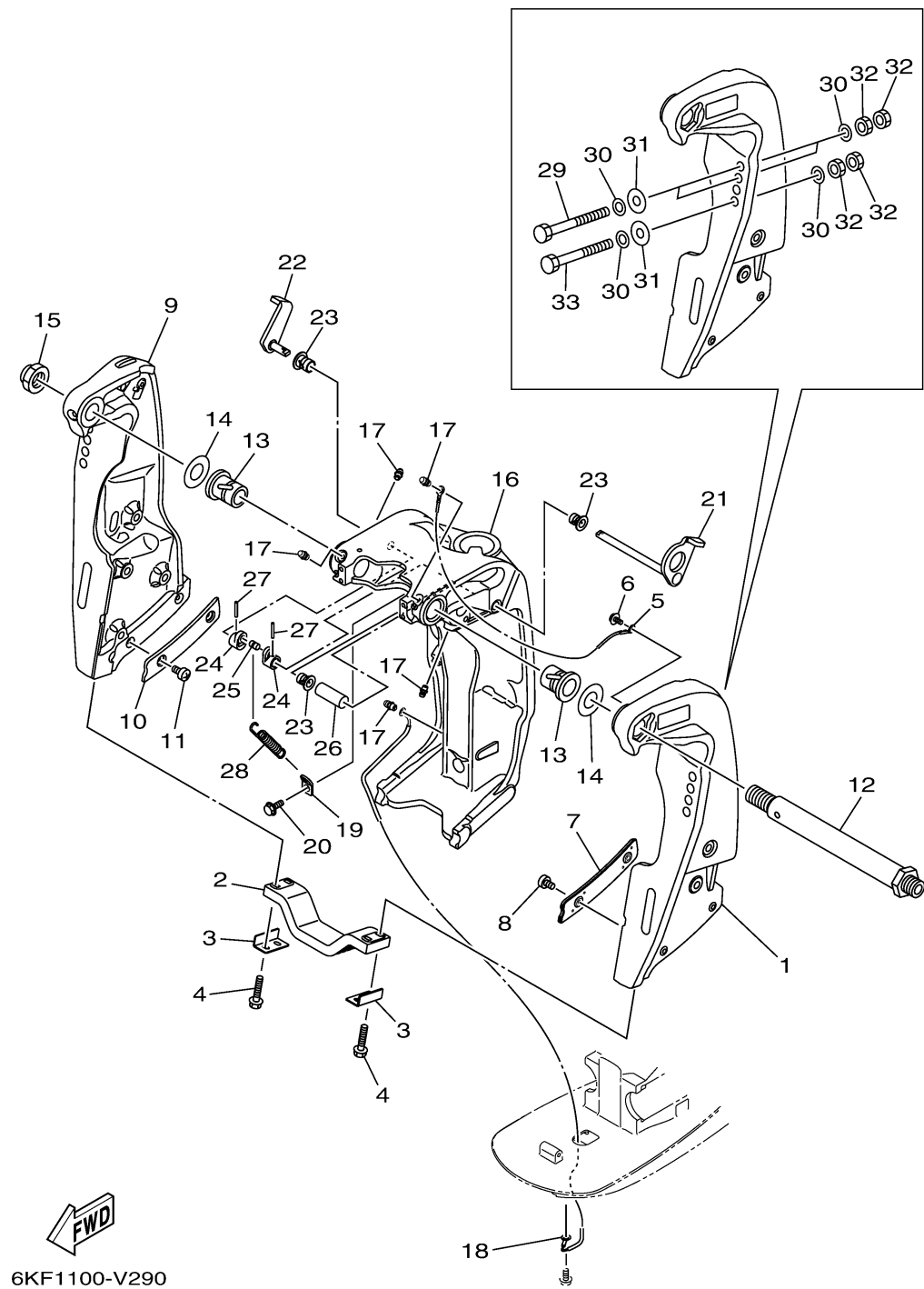


# BRACKET 1

Ref No.	Part Number	Description	Qty	Remarks
1	69J-43111-03-8D	BRACKET, CLAMP 1	1	GRAY
1	69J-43111-03-CE	BRACKET, CLAMP 1	0	WHITE
2	6G5-45251-02-00	ANODE	1	
3	6G5-44526-00-00	PLATE	2	
4	97E95-06525-00	BOLT, HEXAGON W/W DEEP RECESS	4	
5	6E5-82148-00-00	WIRE, LEAD 4	1	
6	97985-06212-00	SCREW, WITH WASHER	1	
7	61A-43132-01-00	WASHER, FRICTION	1	
8	97885-06010-00	SCREW, PAN HEAD	2	
9	69J-43112-03-8D	BRACKET, CLAMP 2	1	GRAY
9	69J-43112-03-CE	BRACKET, CLAMP 2	0	WHITE
10	61A-43133-01-00	WASHER, FRICTION	1	
11	97885-06010-00	SCREW, PAN HEAD	2	
12	6R3-43131-00-00	BOLT, CLAMP BRACKET	1	
13	90386-25M31-00	BUSH	2	
14	90201-26M59-00	WASHER, PLATE	2	
15	90185-22M11-00	NUT, SELF-LOCKING	1	
16	6KF-43311-00-8D	BRACKET, SWIVEL 1	1	GRAY
16	6KF-43311-00-CE	BRACKET, SWIVEL 1	0	WHITE
17	93700-06002-00	NIPPLE, GREASE	7	

CONTINUED ON NEXT FRAME >



# BRACKET 1

Ref No.	Part Number	Description	Qty	Remarks
18	6KA-82147-00-00	WIRE, LEAD 5	1	
19	6G5-43144-00-00	HOOK, SPRING	1	
20	97E95-06512-00	BOLT, HEXAGON W/W DEEP RECESS	1	
21	61A-43181-01-00	LEVER, TILT STOP 1	1	
22	6G5-43185-02-00	LEVER, TILT STOP 2	1	
23	90386-10M16-00	BUSH	3	
24	6G5-43148-00-00	COLLAR, DISTANCE	2	
25	90249-06M19-00	PIN	1	
26	90387-10M05-00	COLLAR	1	
27	91690-30020-00	PIN, SPRING	2	
28	90506-16003-00	SPRING, TENSION	1	
29	90101-12065-00	BOLT (L:130MM)	2	
30	90201-13M01-00	WASHER, PLATE	8	
31	90201-12426-00	WASHER, PLATE	4	
32	95380-12600-00	NUT	8	
33	90101-12066-00	BOLT (L:150MM)	2	