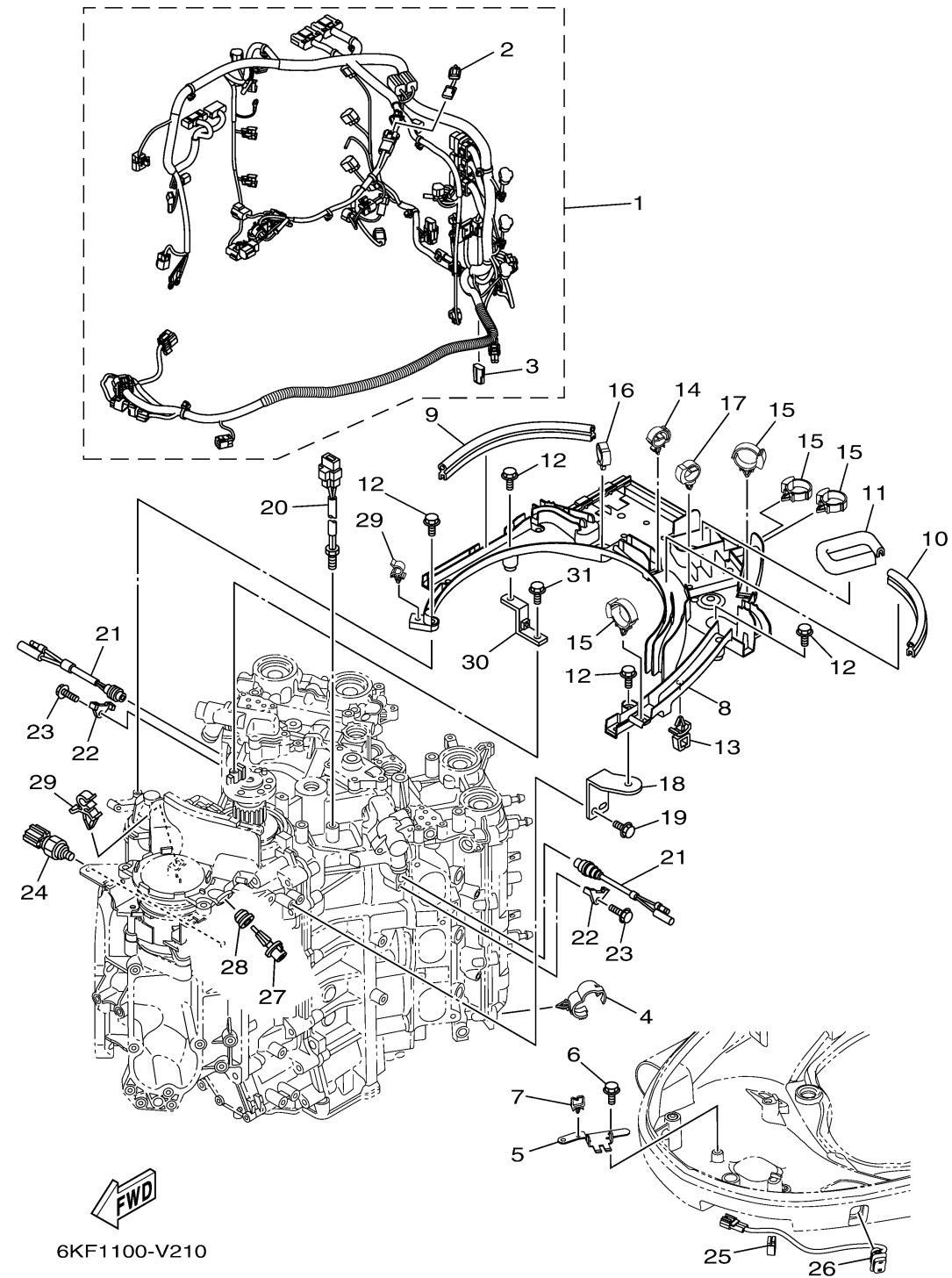


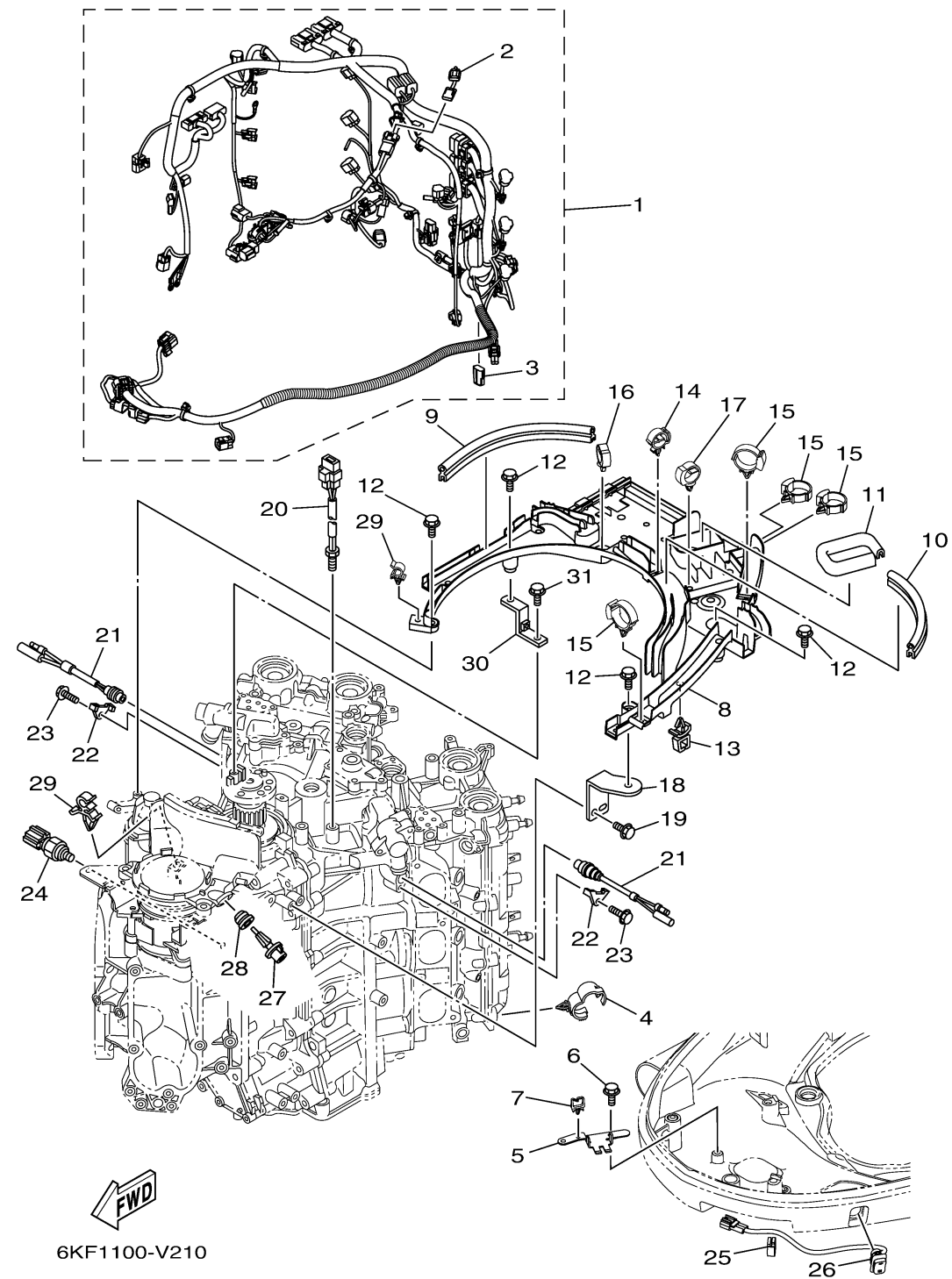
ELECTRICAL 4



Ref No.	Part Number	Description	Qty	Remarks
1	6KF-82590-02-00	WIRE HARNESS ASSY	1	
2	6CE-81980-01-00	. .DIODE ASSY	1	
3	68V-82582-10-00	. .CAP 1 (2P)	1	
4	90464-20181-00	CLAMP	4	
5	6KA-82594-00-00	CLAMP	1	
6	95D95-06012-00	BOLT, FLANGE DEEP RECESS	2	
7	90464-08004-00	CLAMP	1	
8	6CB-82589-01-00	PROTECTOR, WIRE HARNESS	1	
9	6BG-42617-00-00	DAMPER, FORM	1	
10	6CB-42617-00-00	DAMPER, FORM	1	
11	6CB-42629-00-00	SEAL	1	
12	95D95-06020-00	BOLT, FLANGE DEEP RECESS	5	
13	90464-11121-00	CLAMP	1	
14	90464-18246-00	CLAMP	1	
15	90464-12183-00	CLAMP	4	
16	90464-20181-00	CLAMP	1	
17	90464-20181-00	CLAMP	1	
18	6CB-82388-00-00	PLATE	1	
19	95D95-06016-00	BOLT, FLANGE DEEP RECESS	2	
20	6CB-85790-00-00	THERMOSENSOR ASSY	1	

CONTINUED ON NEXT FRAME >

ELECTRICAL 4



Ref No.	Part Number	Description	Qty	Remarks
21	6P2-82560-01-00	THERMO SWITCH ASSY	2	
22	6E9-82588-00-00	PLATE	2	
23	95D95-06012-00	BOLT, FLANGE DEEP RECESS	2	
24	6AW-83651-01-00	SENDER, OIL PRESSURE	1	
25	90464-16001-00	CLAMP	1	
26	6GR-82563-00-00	TRIM & TILT SWITCH	1	
27	63P-85886-00-00	SENSOR, AIR TEMPERATURE	1	
28	6CE-14435-00-00	GROMMET	1	
29	90464-09129-00	CLAMP	2	
30	6CB-81952-00-00	HOLDER, RELAY	1	
31	95D95-06016-00	BOLT, FLANGE DEEP RECESS	1	