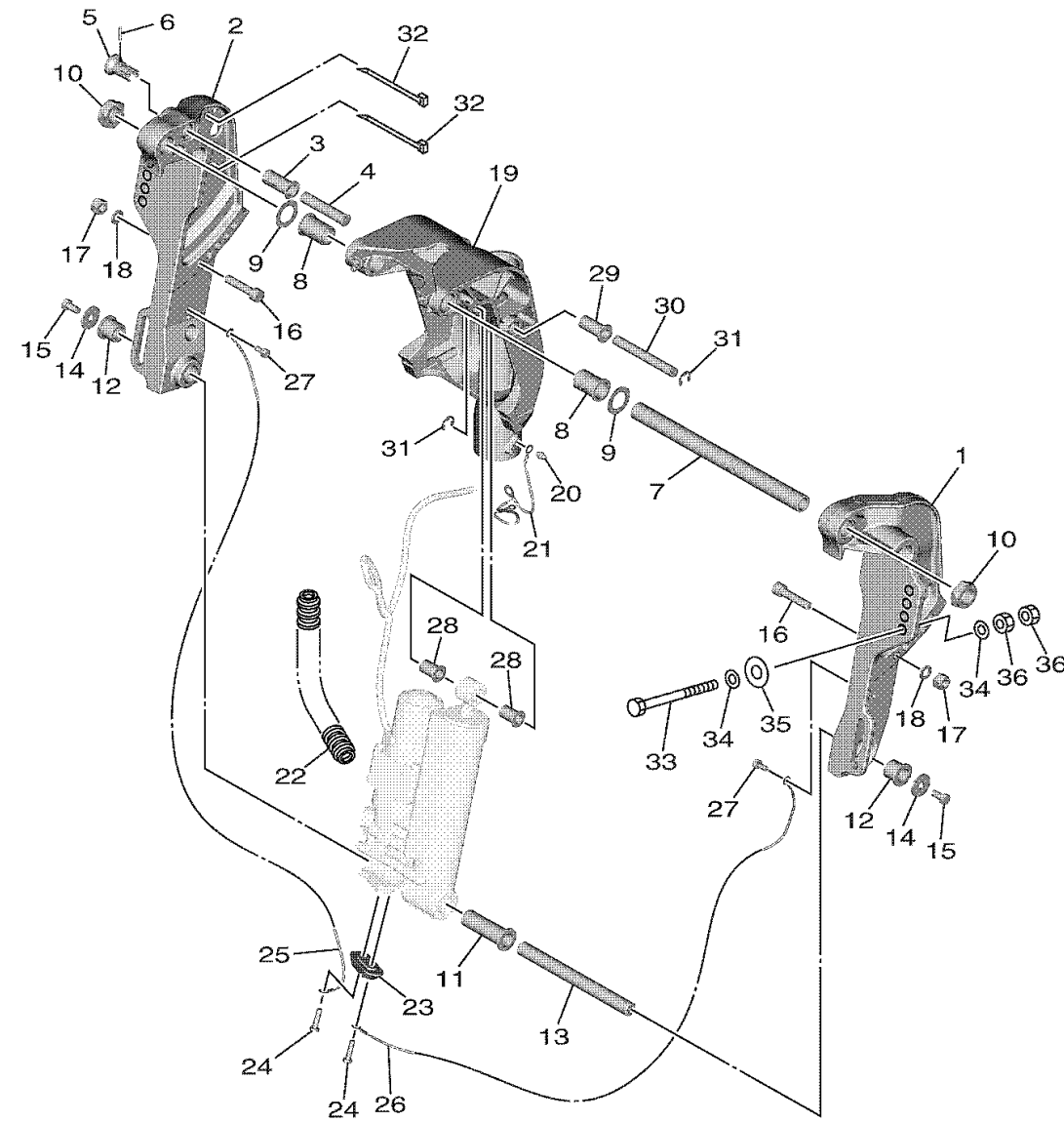


6FM3100DT290

BRACKET 1

Ref No.	Part Number	Description	Qty	Remarks
1	65W-43111-10-CE	BRACKET, CLAMP 1	1	WHITE
1	65W-43111-10-CH	BRACKET, CLAMP 1	0	MATTE BROWN
2	65W-43112-10-CH	BRACKET, CLAMP 2	0	MATTE BROWN
2	65W-43112-10-CE	BRACKET, CLAMP 2	1	WHITE
3	6FM-43189-00-00	BUSHING	1	
4	65W-43191-00-00	SHAFT, STOPPER	1	
5	6FM-43192-00-00	KNOB, STOPPER	1	
6	91690-30018-00	PIN, SPRING	1	
7	63D-43131-01-00	BOLT, CLAMP BRACKET	1	
8	90386-22M15-00	BUSH	2	
9	90201-22M03-00	WASHER, PLATE	2	
10	90185-22M11-00	NUT, SELF-LOCKING	2	
11	90386-18MA0-00	BUSH	1	
12	90386-18M44-00	BUSH	2	
13	6BG-43818-00-00	PIN, LOWER SHOCK MOUNT	1	
14	90201-08M00-00	WASHER, PLATE	2	
15	97080-08016-00	BOLT	2	
16	90110-10061-00	BOLT, HEXAGON SOCKET HEAD	2	
17	90185-10M13-00	NUT, SELF-LOCKING	2	
18	92995-10600-00	WASHER	2	

CONTINUED ON NEXT FRAME >



6FM3100DT290

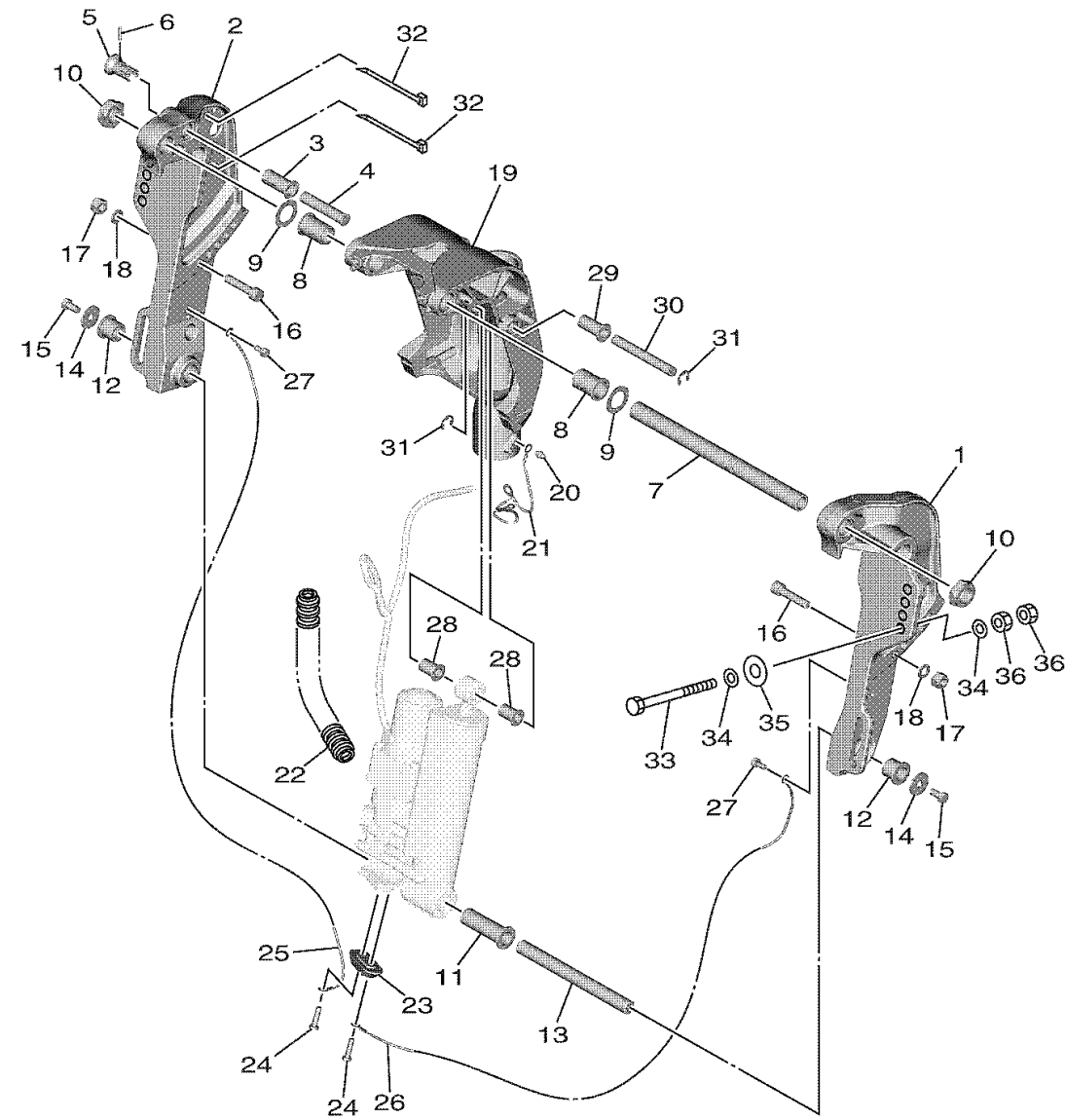
BRACKET 1

Ref No.	Part Number	Description	Qty	Remarks
19	6FM-43311-20-CE	BRACKET, SWIVEL 1	0	WHITE, L(21.7")
19	6FM-43311-30-CE	BRACKET, SWIVEL 1	1	WHITE, S(16.7")
19	6FM-43311-30-CH	BRACKET, SWIVEL 1	0	MATTE BROWN, S(16.7")
19	6FM-43311-20-CH	BRACKET, SWIVEL 1	0	MATTE BROWN, L(21.7")
20	93700-06004-00	NIPPLE, GREASE	1	
21	6FM-82127-00-00	WIRE, LEAD 2	1	
22	90447-10010-00	TUBE	1	
23	65W-45251-00-00	ANODE	1	
24	90101-06020-00	BOLT	2	
25	6H1-82148-00-00	WIRE, LEAD 4	1	
26	6U0-82127-00-00	WIRE, LEAD 2	1	
27	97E95-06514-00	BOLT, HEXAGON W/W DEEP RECESS	2	
28	90381-12M11-00	BUSH, SOLID	2	
29	90386-12M98-00	BUSH	1	
30	90249-12M38-00	PIN	1	
31	99080-10600-00	CIRCLIP	2	
32	90465-13M11-00	CLAMP	3	
33	90101-12063-00	BOLT (L:105MM)	4	
34	90201-12062-00	WASHER, PLATE	8	
35	90201-12426-00	WASHER, PLATE	4	

CONTINUED ON NEXT FRAME >

BRACKET 1

Ref No.	Part Number	Description	Qty	Remarks
36	95380-12600-00	NUT	8	



6FM3100DT290