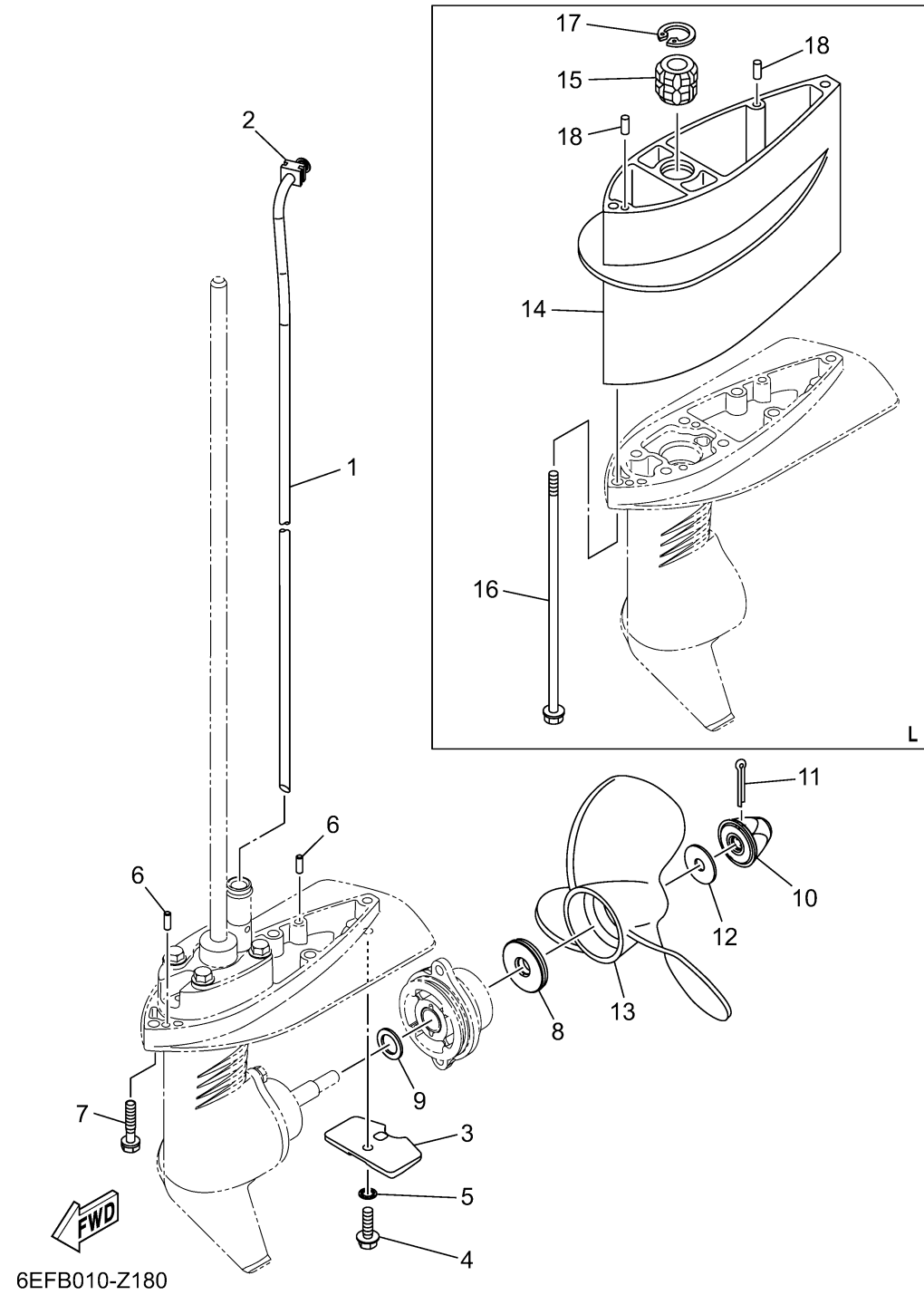


# LOWER CASING DRIVE 2



Ref No.	Part Number	Description	Qty	Remarks
1	6EG-44361-00-00	TUBE, WATER 1	1	S(17.0")
1	6EG-44361-10-00	TUBE, WATER 1	0	L(22.0")
2	646-44365-01-00	.DAMPER, WATER SEAL 1	1	
3	6L5-45251-03-00	ANODE	1	
4	95D95-06012-00	BOLT, FLANGE DEEP RECESS	1	
5	92990-06300-00	WASHER, INTERNAL TOOTH	1	
6	93604-12M07-00	PIN, DOWEL	2	
7	90119-06324-00	BOLT, WITH WASHER	3	S(17.0")
8	6L5-45987-01-00	SPACER 1	1	
9	90201-13198-00	WASHER, PLATE	1	
10	6L5-45616-00-00	NUT, PROPELLER	1	
11	91490-25030-00	PIN. COTTER	1	
12	90201-08M54-00	WASHER, PLATE	1	
13	6L5-45943-00-00	PROPELLER (3X7-1/4"X6"-BS)	1	UR
13	6L5-45945-00-00	PROPELLER (3X7-1/4"X7-1/4"-BS)	1	UR
13	6L5-45947-00-00	PROPELLER (3X7-1/4"X8-1/4"-BS)	1	UR
13	6L5-45949-00-00	PROPELLER (3X7-1/4"X5"-BS)	1	UR
13	6L5-45952-00-00	PROPELLER (3X7-1/4"X5-1/2"-BS)	1	UR
14	6L5-45211-10-8D	EXTENSION	0	L(22.0")
15	6L5-45318-00-00	BUSHING, DRIVE SHAFT	0	L(22.0")

CONTINUED ON NEXT FRAME >

## LOWER CASING DRIVE 2

Ref No.	Part Number	Description	Qty	Remarks
16	90119-06325-00	BOLT, WITH WASHER	0	L(22.0")
17	93420-22M03-00	CIRCLIP	0	L(22.0")
18	93604-12M07-00	PIN, DOWEL	0	L(22.0")

