

BRACKET 1

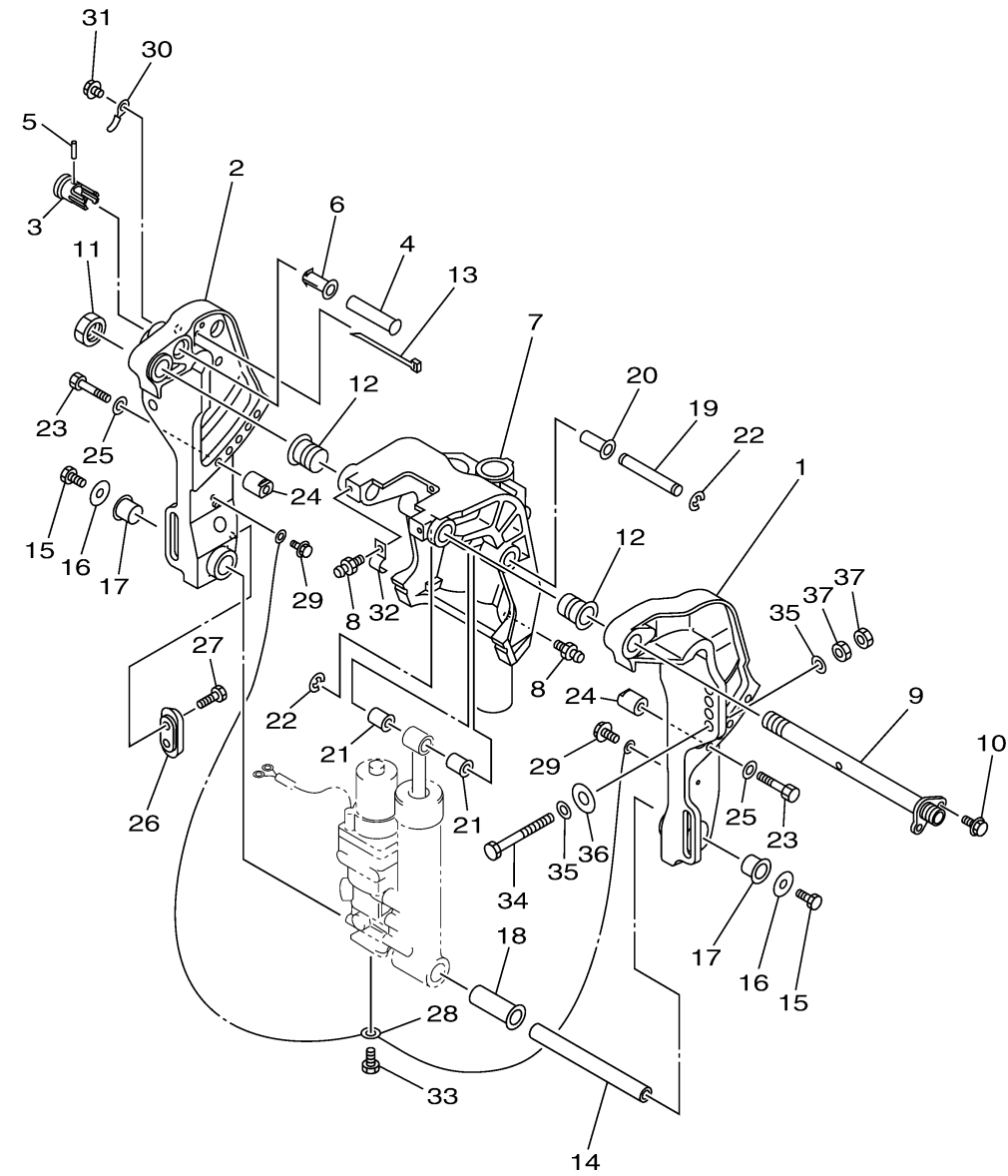
Ref No.	Part Number	Description	Qty	Remarks
1	6K9-43111-10-8D	BRACKET, CLAMP 1	1	
2	6BG-43112-10-8D	BRACKET, CLAMP 2	1	
3	6FM-43192-00-00	KNOB, STOPPER	1	
4	65W-43191-00-00	SHAFT, STOPPER	1	
5	91690-30018-00	PIN, SPRING	1	
6	6FM-43189-00-00	BUSHING	1	
7	6BG-43311-10-8D	BRACKET, SWIVEL 1	1	L(21.1")
8	93700-06004-00	NIPPLE, GREASE	3	
9	6K9-43131-01-00	BOLT, CLAMP BRACKET	1	
10	97E95-08520-00	BOLT, HEXAGON W/W DEEP RECESS	1	
11	90185-22043-00	NUT, SELF-LOCKING	1	
12	90386-22MA4-00	BUSH	2	
13	90465-13M11-00	CLAMP	2	
14	6BG-43818-00-00	PIN, LOWER SHOCK MOUNT	1	
15	97080-08016-00	BOLT	2	
16	90201-08M00-00	WASHER, PLATE	2	
17	90386-18M44-00	BUSH	2	
18	90386-18MA0-00	BUSH	1	
19	90249-12M38-00	PIN	1	
20	90381-12M10-00	BUSH, SOLID	1	

CONTINUED ON NEXT FRAME >



6BTF100-V260

BRACKET 1



Ref No.	Part Number	Description	Qty	Remarks
21	90381-12M11-00	BUSH, SOLID	2	
22	99080-10600-00	CIRCLIP	2	
23	97D95-10050-00	BOLT, HEXAGON DEEP RECESS	2	
24	6BG-43654-A0-00	NUT 1	2	
25	92995-10600-00	WASHER	2	
26	65W-45251-00-00	ANODE	1	
27	90101-06020-00	BOLT	2	
28	6BG-82127-00-00	WIRE, LEAD 2	1	
29	97E95-06514-00	BOLT, HEXAGON W/W DEEP RECESS	2	
30	90465-10M77-00	CLAMP	1	
31	97E95-06514-00	BOLT, HEXAGON W/W DEEP RECESS	1	
32	90465-08M63-00	CLAMP	1	
33	97085-06010-00	BOLT	1	
34	90101-12063-00	BOLT (L:105MM)	4	
35	90201-12062-00	WASHER, PLATE	8	
36	90201-12426-00	WASHER, PLATE	4	
37	95380-12600-00	NUT	8	

FWD
6BTF100-V260