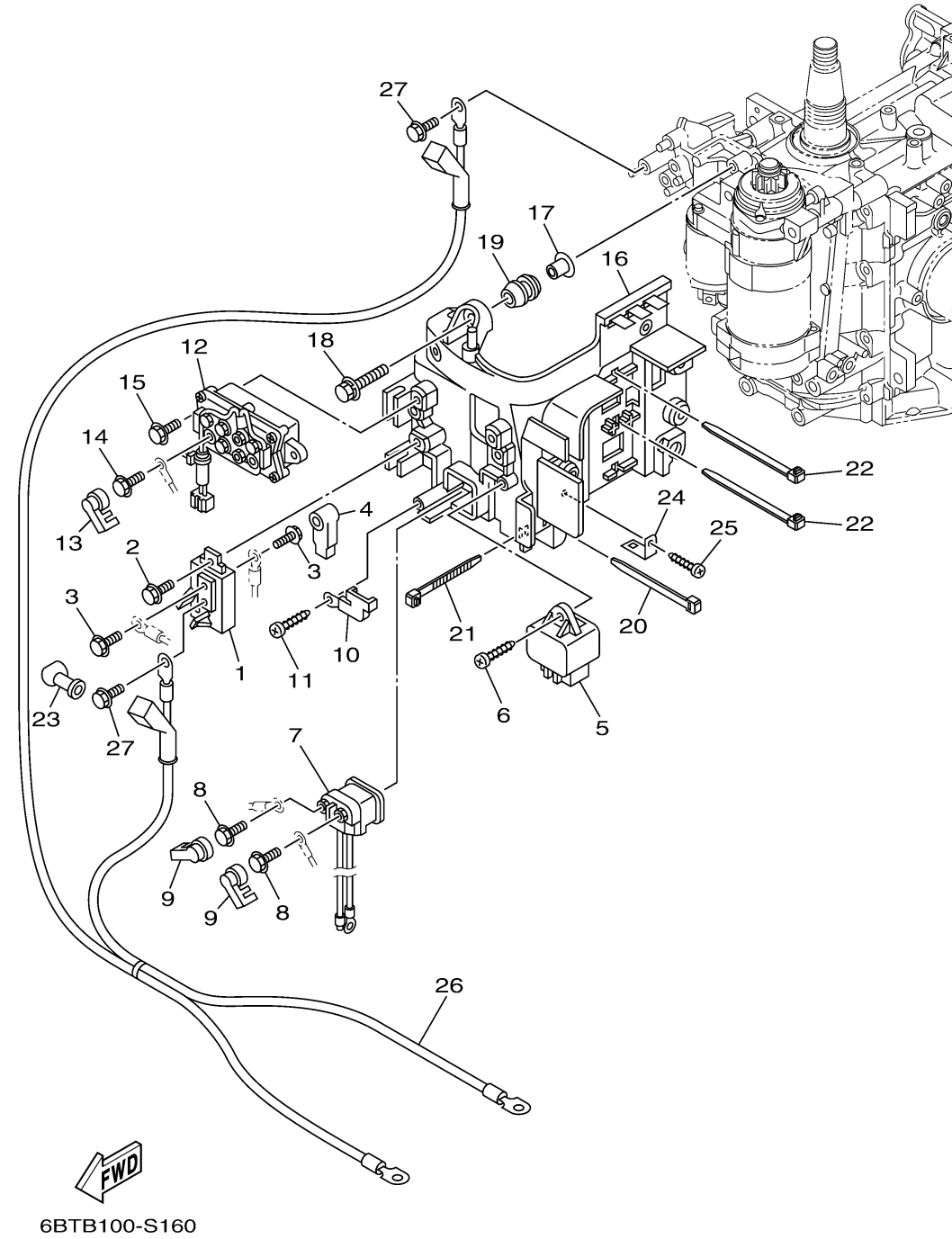
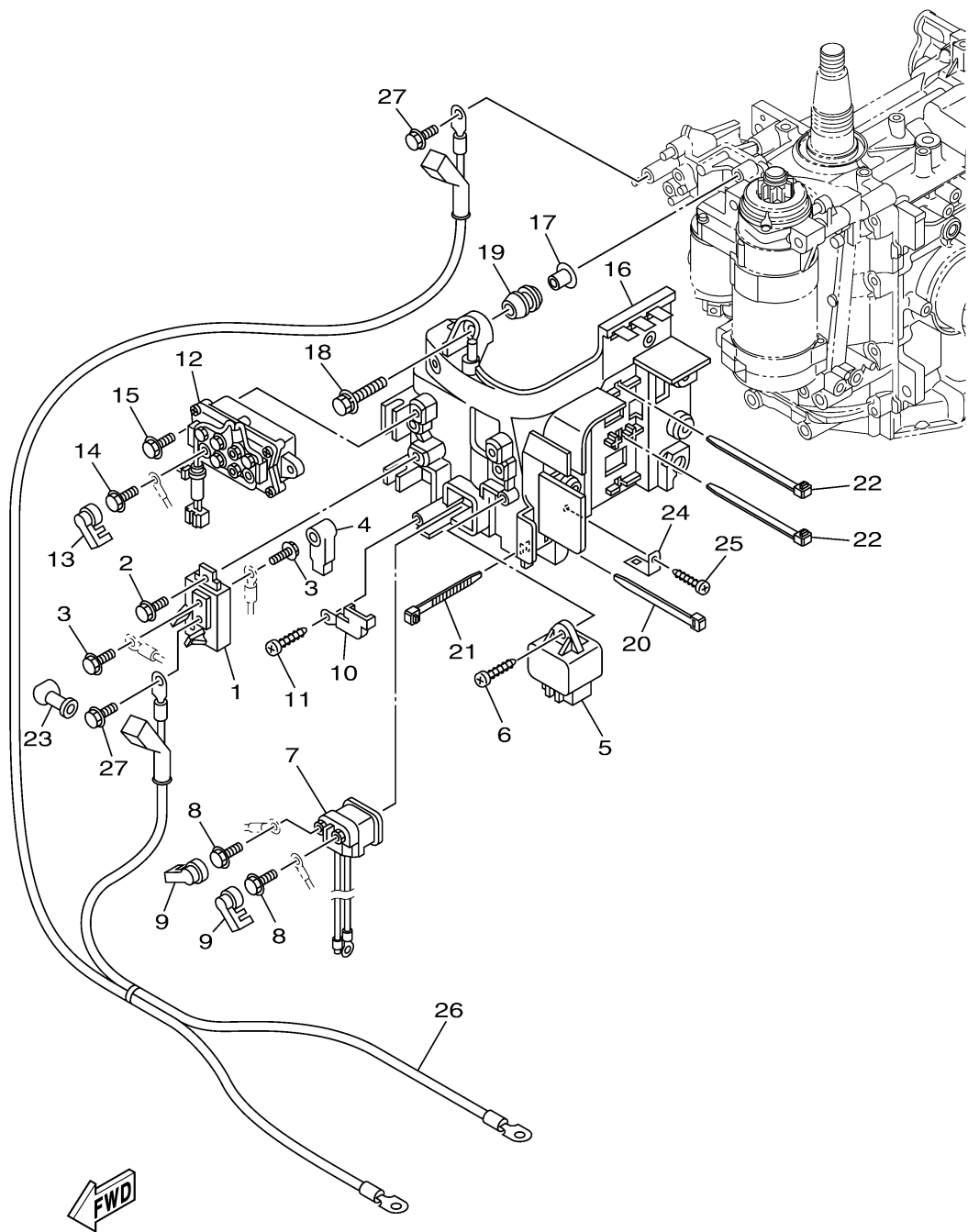


ELECTRICAL 3



Ref No.	Part Number	Description	Qty	Remarks
1	6BG-81925-00-00	TERMINAL	1	
2	97E95-06516-00	BOLT, HEXAGON W/W DEEP RECESS	1	
3	97E95-06610-00	BOLT, HEXAGON W/W DEEP RECESS	2	
4	682-82119-01-00	COVER, LEAD WIRE	1	
5	60E-81950-00-00	RELAY ASSY	1	
6	97780-60620-00	SCREW, TAPPING	1	
7	6AW-8194A-00-00	RELAY	1	
8	97E95-06610-00	BOLT, HEXAGON W/W DEEP RECESS	2	
9	6P2-8183X-00-00	CAP, TERMINAL	2	
10	68F-81953-00-00	STAY, RELAY	1	
11	97780-60620-00	SCREW, TAPPING	1	
12	63P-W8195-00-00	RELAY ASSY	1	
13	6P2-8183X-00-00	CAP, TERMINAL	2	
14	97E95-06610-00	BOLT, HEXAGON W/W DEEP RECESS	2	
15	97E95-06520-00	BOLT, HEXAGON W/W DEEP RECESS	2	
16	6BG-81948-01-00	BRACKET	1	
17	90387-06119-00	COLLAR	6	
18	95D95-06025-00	BOLT, FLANGE DEEP RECESS	6	
19	6A0-82317-01-00	DAMPER, IGNITION COIL	6	
20	90465-13M24-00	CLAMP	1	

CONTINUED ON NEXT FRAME >



6BTB100-S160

ELECTRICAL 3

Ref No.	Part Number	Description	Qty	Remarks
21	90465-13M39-00	CLAMP	1	
22	90465-14M66-00	CLAMP	2	
23	6G5-82119-00-00	COVER, LEAD WIRE	1	
24	68V-85548-01-00	HOLDER	1	
25	97780-60620-00	SCREW, TAPPING	1	
26	6BG-82105-U2-00	BATTERY CABLE	1	AP
27	97E95-06516-00	BOLT, HEXAGON W/W DEEP RECESS	2	AP