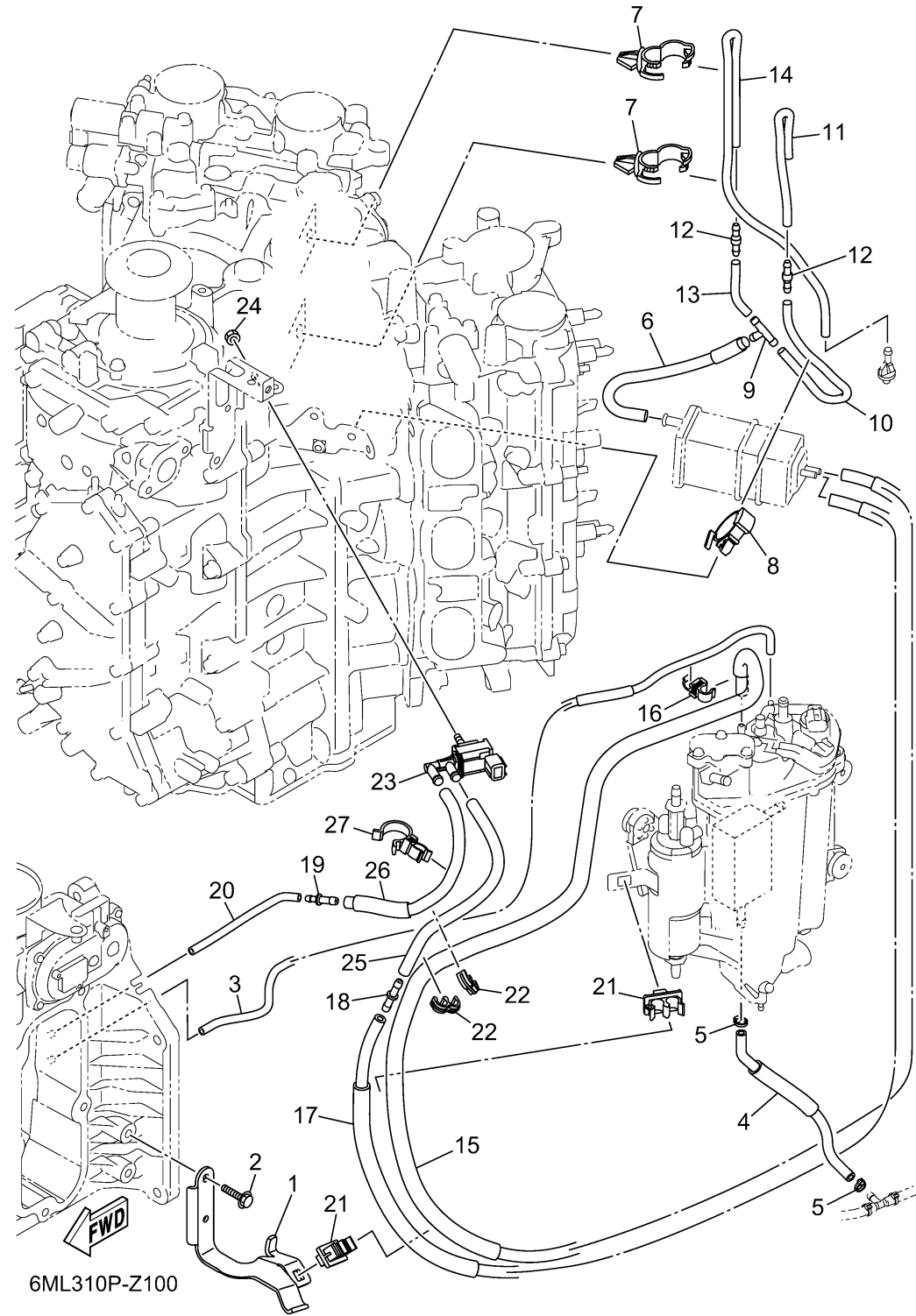


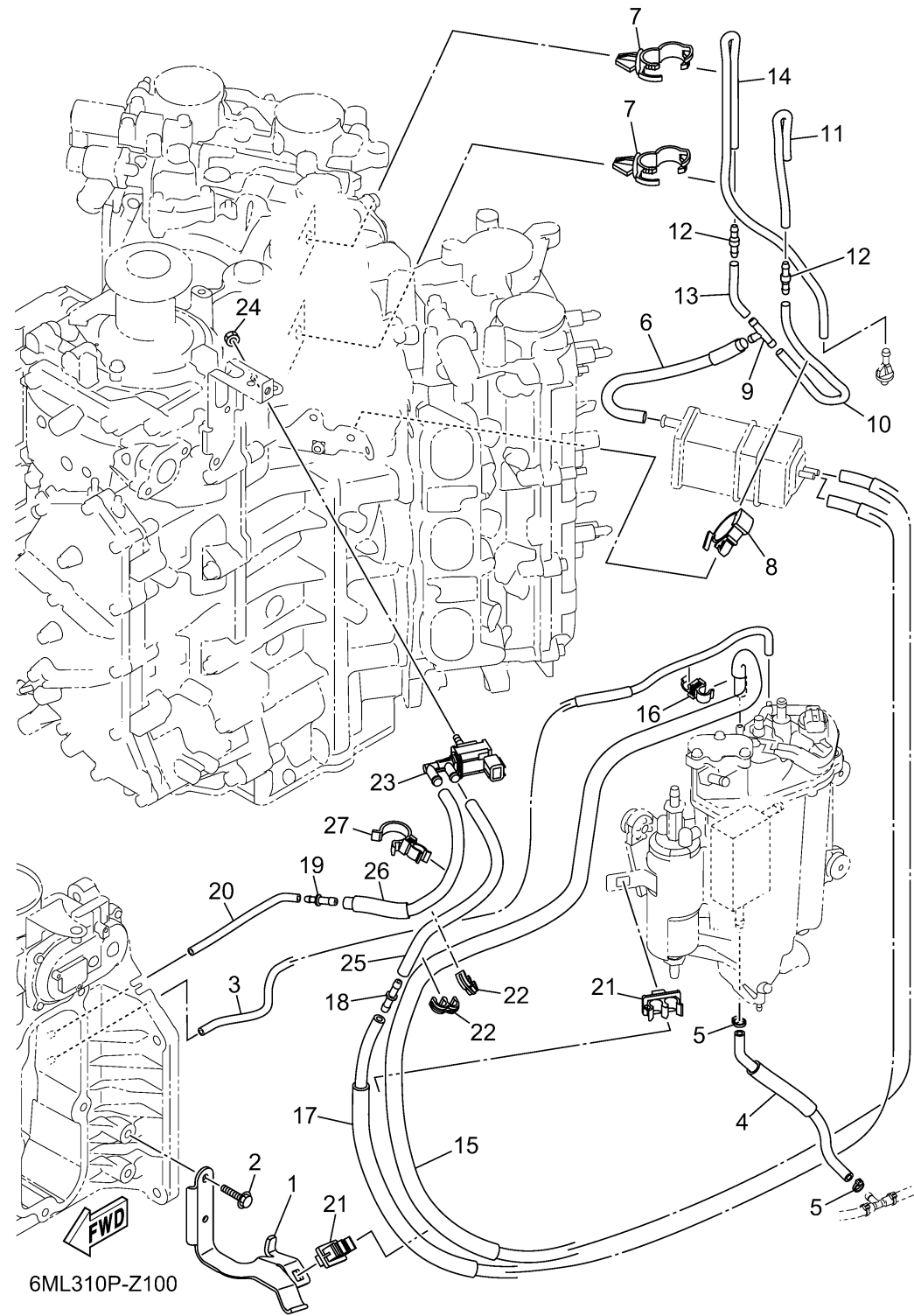
# INTAKE 2



Ref No.	Part Number	Description	Qty	Remarks
1	6ML-13782-00-00	STAY	1	
2	95D95-06016-00	BOLT, FLANGE DEEP RECESS	2	
3	6ML-13532-00-00	HOSE, VACUUM SENSING 3	1	
4	6ML-12482-00-00	PIPE 2	1	
5	90465-11M10-00	CLAMP	2	
6	6CB-13545-00-00	HOSE 1	1	
7	90464-20181-00	CLAMP	2	
8	90464-07209-00	CLAMP	1	
9	688-24378-00-00	PIPE, JOINT 3	1	
10	6CB-13546-01-00	HOSE 2	1	
11	6CB-13547-00-00	HOSE 3	1	
12	6E5-21744-00-00	BREATHER	2	
13	6CB-13548-00-00	HOSE, AIR 4	1	
14	6KA-12483-00-00	PIPE 3	1	
15	6ML-1475A-10-00	PIPE 1	1	
16	90464-09013-00	CLAMP	1	
17	6ML-1475E-00-00	PIPE 2	1	
18	6G8-24376-00-00	PIPE, JOINT 1	1	
19	6EK-14989-00-00	ORIFICE, AIR VENT	1	
20	6ML-1475G-00-00	PIPE 4	1	

CONTINUED ON NEXT FRAME >

# INTAKE 2



Ref No.	Part Number	Description	Qty	Remarks
21	90464-11012-00	CLAMP	2	
22	90464-10M57-00	CLAMP	2	
23	6C5-86120-00-00	SOLENOID VALVE ASSY	1	
24	95380-06600-00	NUT, HEXAGON	1	
25	6ML-1475F-00-00	PIPE 3	1	
26	6ML-2416A-00-00	HOSE	1	
27	90464-23001-00	CLAMP	1	