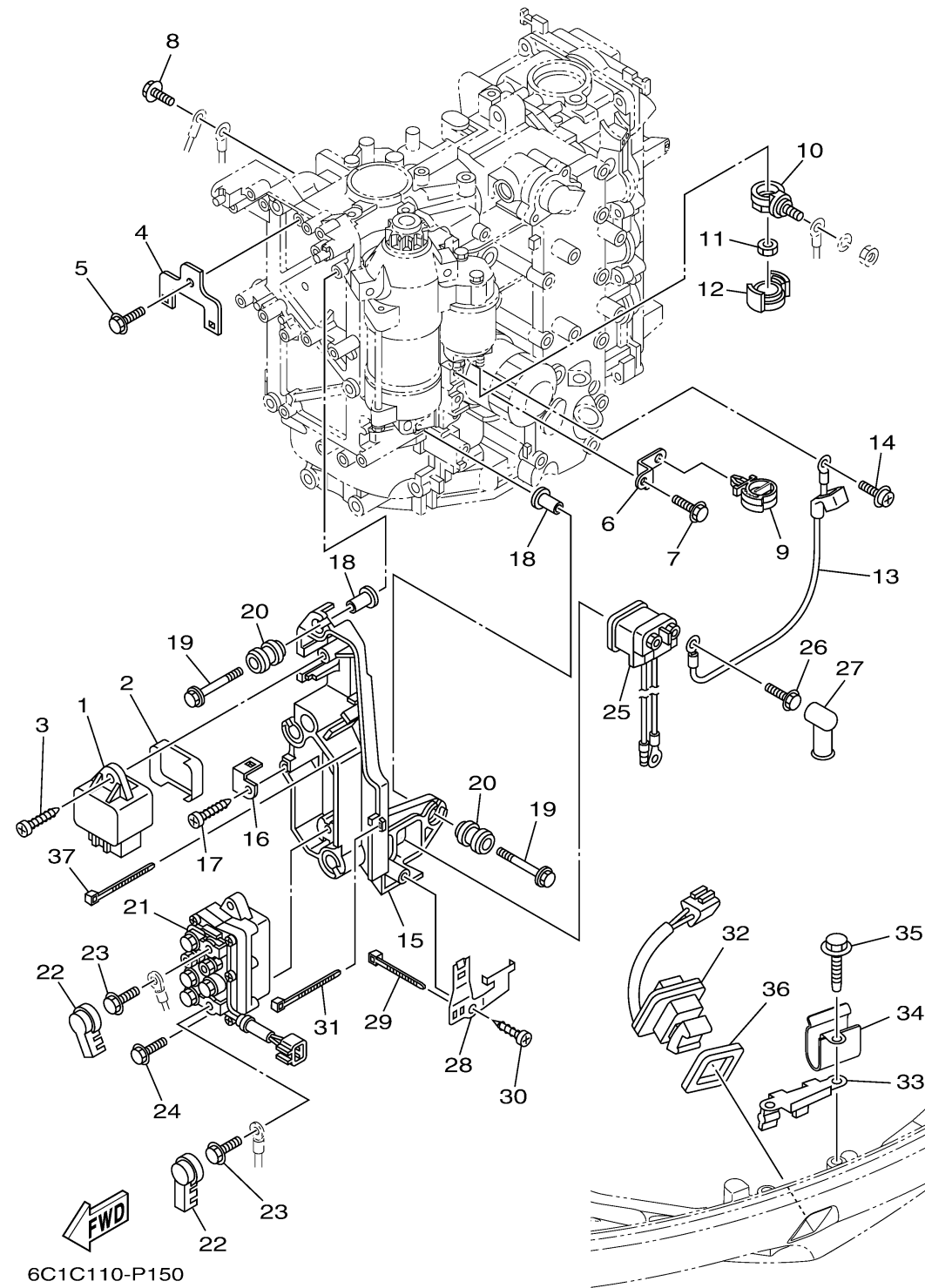


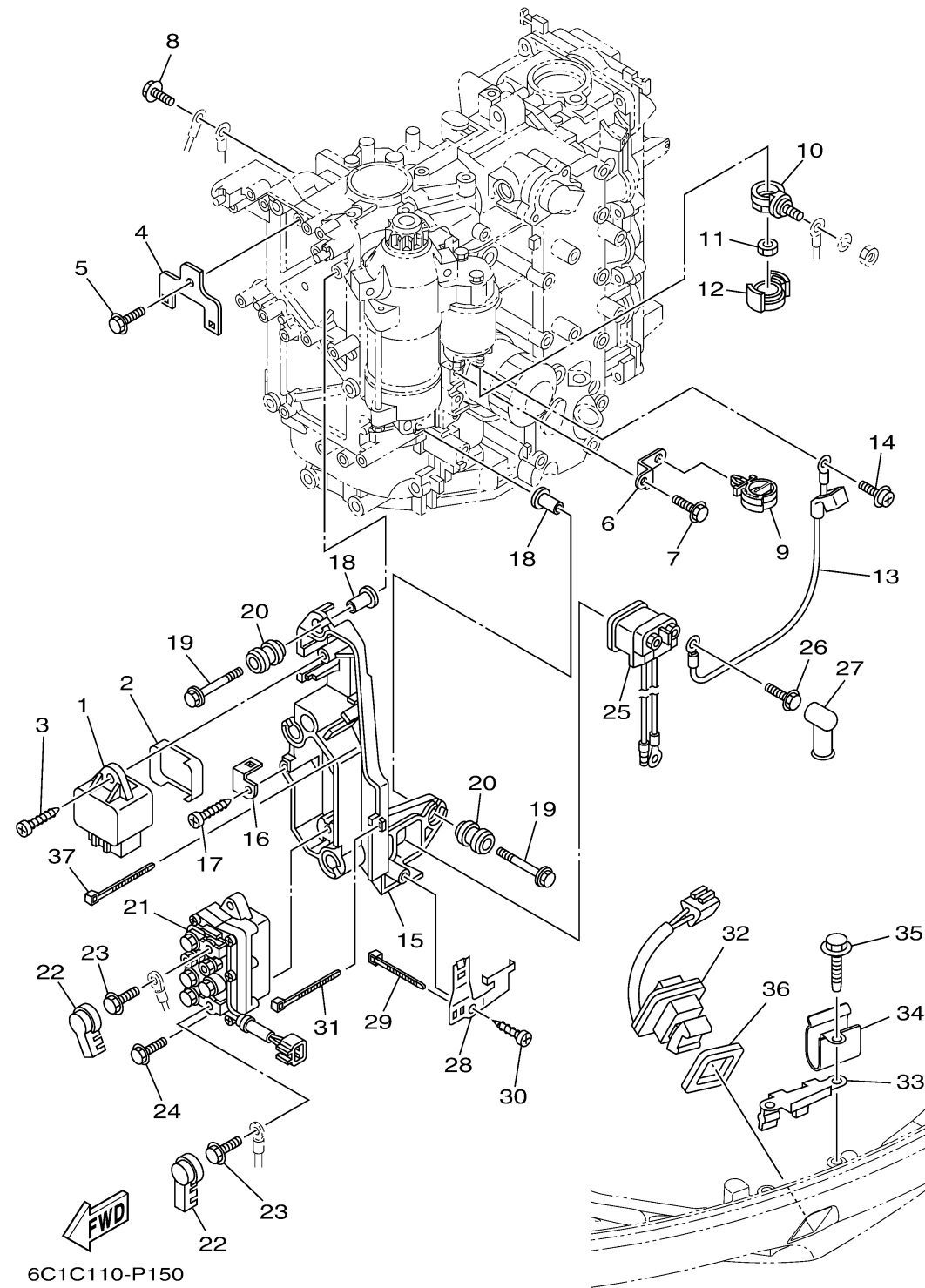
ELECTRICAL 2



Ref No.	Part Number	Description	Qty	Remarks
1	60E-81950-00-00	RELAY ASSY	1	
2	6C5-81336-01-00	GROMMET	1	
3	97780-60620-00	SCREW, TAPPING	1	
4	6C5-8257V-00-00	PLATE, CONNECTOR	1	
5	97E95-06514-00	BOLT, HEXAGON W/W DEEP RECESS	1	
6	6C5-85525-10-00	PLATE	1	
7	97E95-06620-00	BOLT, HEXAGON W/W DEEP RECESS	3	
8	97E95-06620-00	BOLT, HEXAGON W/W DEEP RECESS	1	
9	90464-12183-00	CLAMP	1	
10	60V-81925-00-00	TERMINAL	1	
11	90179-08003-00	NUT	1	
12	68F-82582-00-00	CAP,1	1	
13	6C5-81815-00-00	CORD, STARTER MOTOR	1	
14	90159-04005-00	SCREW, WITH WASHER	1	
15	6C5-81948-00-00	BRACKET	1	
16	6C5-85548-01-00	HOLDER	1	
17	97780-60620-00	SCREW, TAPPING	1	
18	90387-06119-00	COLLAR	4	
19	90119-06289-00	BOLT, WITH WASHER	4	
20	6A0-82317-01-00	DAMPER, IGNITION COIL	4	

CONTINUED ON NEXT FRAME >

ELECTRICAL 2



Ref No.	Part Number	Description	Qty	Remarks
21	63P-W8195-00-00	RELAY ASSY	1	
22	6P2-8183X-00-00	CAP, TERMINAL	2	
23	97E95-06610-00	BOLT, HEXAGON W/W DEEP RECESS	2	
24	97E95-06520-00	BOLT, HEXAGON W/W DEEP RECESS	2	
25	68V-8194A-00-00	RELAY	1	
26	97E95-06610-00	BOLT, HEXAGON W/W DEEP RECESS	2	
27	6G5-82119-00-00	COVER, LEAD WIRE	2	
28	6C5-81953-00-00	STAY, RELAY	1	
29	90465-11M10-00	CLAMP	1	
30	97780-60620-00	SCREW, TAPPING	1	
31	90465-13M97-00	CLAMP	1	
32	69J-82563-01-00	TRIM & TILT SWITCH ASSY	1	
33	6BG-83614-00-00	BRACKET	1	
34	90465-08M89-00	CLAMP	1	
35	90109-06316-00	BOLT	2	
36	69J-82587-01-00	GASKET	1	
37	90465-13M97-00	CLAMP	2	