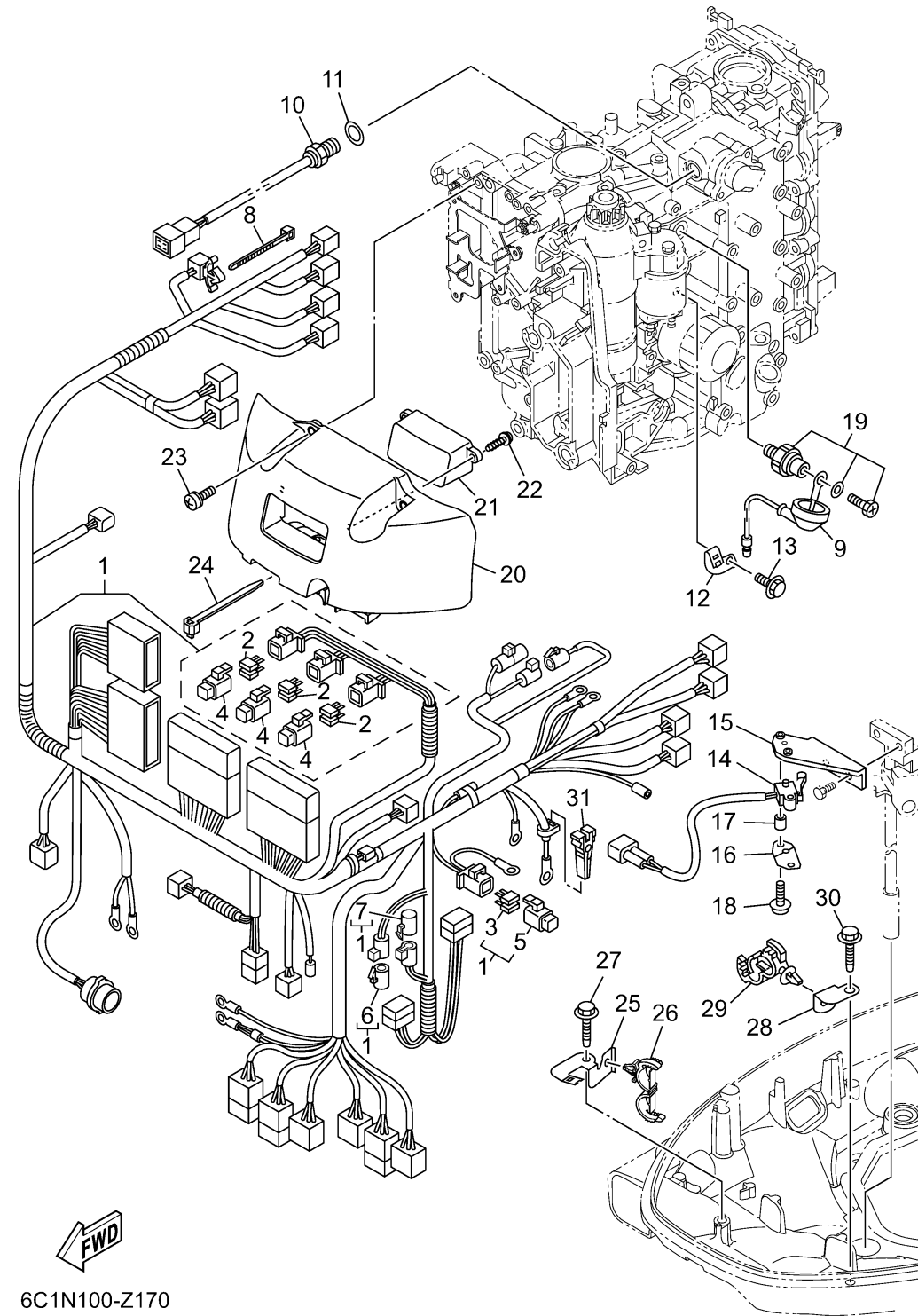


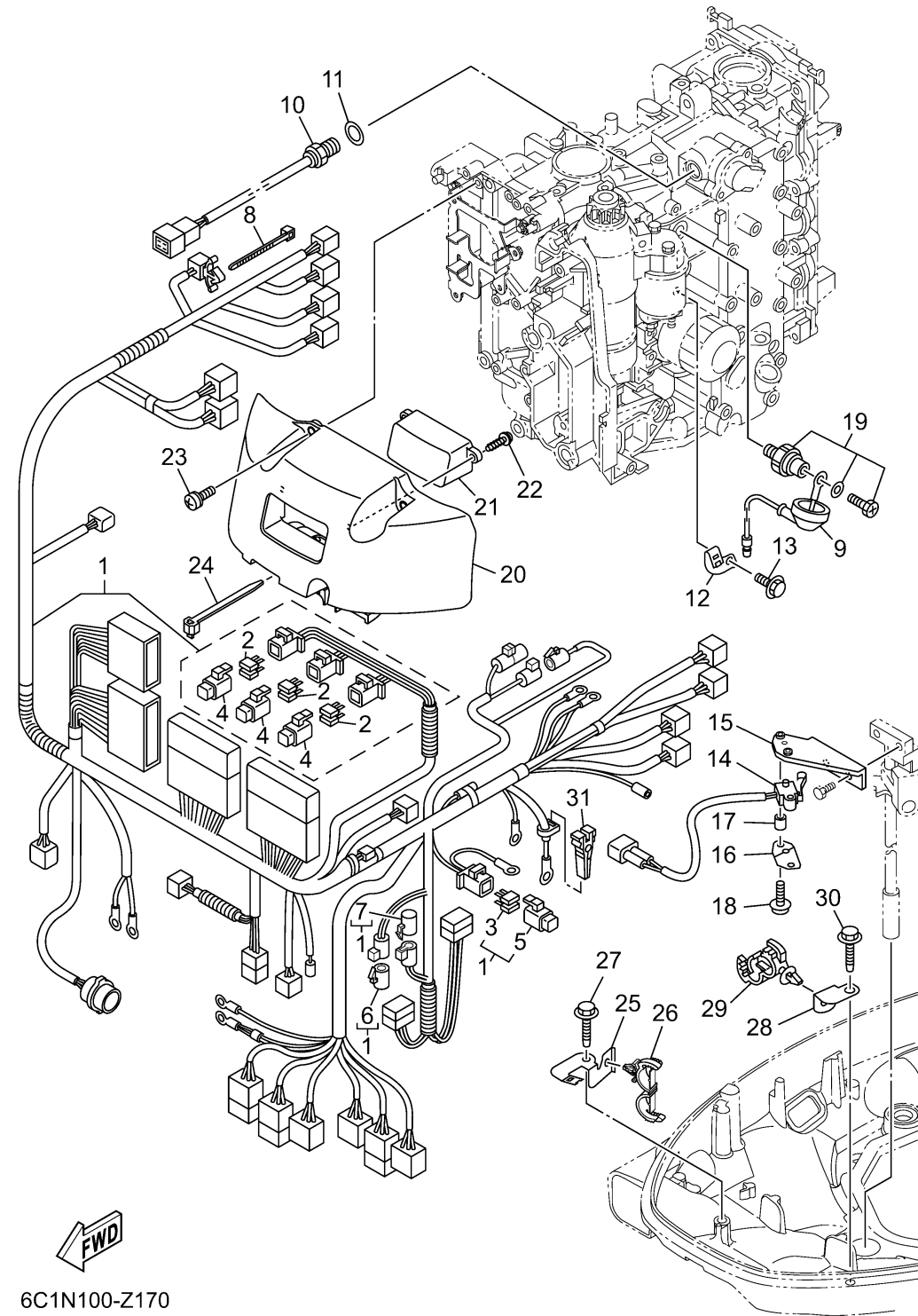
ELECTRICAL 3



Ref No.	Part Number	Description	Qty	Remarks
1	6C5-82590-H0-00	WIRE HARNESS ASSY	1	
2	67F-82151-00-00	. .FUSE (20A)	6	
3	67F-82151-10-00	. .FUSE (30A)	2	
4	67F-8215B-10-00	. .CAP (YELLOW)	3	
5	67F-8215B-20-00	. .CAP (GREEN)	1	
6	6DA-82582-00-00	. .CAP 1 (FEMALE)	1	
7	6DA-82582-10-00	. .CAP 1 (MALE)	1	
8	90465-13M11-00	CLAMP	1	
9	68V-81315-01-00	LEAD WIRE ASSY	1	
10	6CJ-85790-00-00	THERMOSENSOR ASSY	1	
11	90430-14115-00	.GASKET	1	
12	6C5-82388-10-00	PLATE	1	
13	97E95-06514-00	BOLT, HEXAGON W/W DEEP RECESS	1	
14	60V-8259F-01-00	SWITCH ASSY	1	
15	6CJ-82554-00-00	STAY, NEUTRAL SWITCH	1	
16	61A-82588-01-00	PLATE	1	
17	90387-04001-00	COLLAR	1	
18	97985-04116-00	SCREW, WITH WASHER	2	
19	64J-82504-00-00	OIL PRESSURE SWITCH ASSY	1	
20	6C5-81942-10-00	COVER	1	

CONTINUED ON NEXT FRAME >

ELECTRICAL 3



Ref No.	Part Number	Description	Qty	Remarks
21	6CJ-83559-00-00	COVER, METER	1	
22	90167-05009-00	SCREW, TAPPING	2	
23	90159-06M03-00	SCREW, WITH WASHER	4	
24	90465-13M24-00	CLAMP	1	
25	6BG-42811-01-00	STAY	1	
26	90464-18205-00	CLAMP	1	
27	90109-06316-00	BOLT	1	
28	63P-42756-00-00	STAY, CLAMP	1	
29	90464-12183-00	CLAMP	1	
30	90109-06316-00	BOLT	1	
31	67F-2812A-00-00	PULLER, FUSE	1	