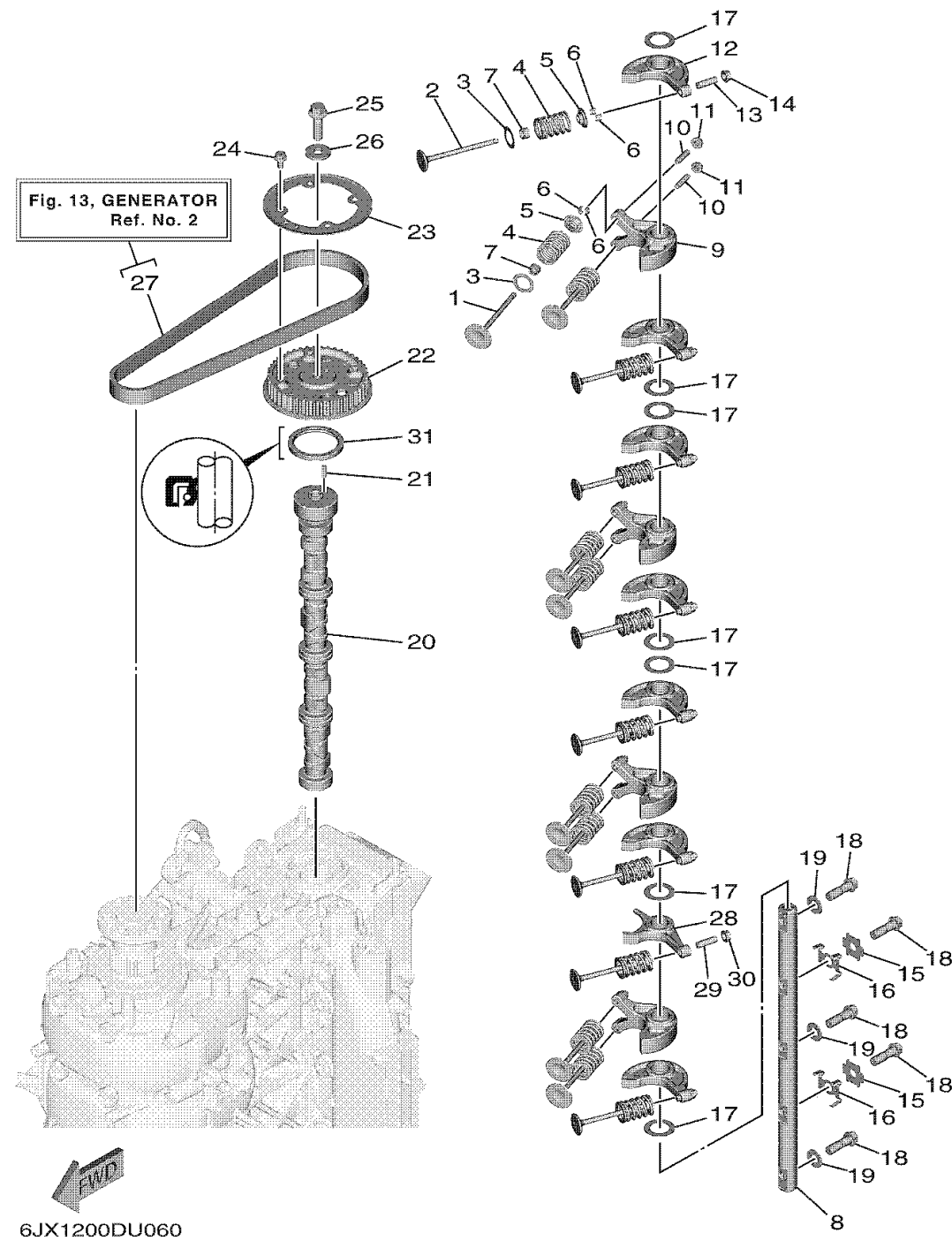


VALVE

| Ref No. | Part Number | Description | Qty | Remarks |
|---------|-----------------|-----------------------------|-----|---------|
| 1 | 6FP-12111-00-00 | VALVE, INTAKE | 8 | |
| 2 | 6FP-12121-00-00 | VALVE, EXHAUST | 8 | |
| 3 | 62Y-12116-00-00 | SEAT, VALVE SPRING | 16 | |
| 4 | 6FP-12113-00-00 | SPRING, VALVE INNER | 16 | |
| 5 | 30X-12117-00-00 | RETAINER, VALVE SPRING | 16 | |
| 6 | 30X-12118-00-00 | LOCK, VALVE SPRING RETAINER | 32 | |
| 7 | 51Y-12119-00-00 | SEAL, VALVE STEM | 16 | |
| 8 | 6FP-12146-00-00 | SHAFT, ROCKER | 1 | |
| 9 | 6FP-12151-00-00 | ARM, VALVE ROCKER | 4 | |
| 10 | 6C5-12159-00-00 | SCREW, VALVE ADJUSTING | 8 | |
| 11 | 6C5-12158-00-00 | NUT, LOCK | 8 | |
| 12 | 6FP-12161-00-00 | ARM, VALVE ROCKER 2 | 7 | |
| 13 | 6C5-12159-10-00 | SCREW, VALVE ADJUSTING | 7 | |
| 14 | 6C5-12158-10-00 | NUT, LOCK | 7 | |
| 15 | 6FP-12231-00-00 | GUIDE, STOPPER 1 | 2 | |
| 16 | 6FP-12233-00-00 | PLATE, GUIDE STOPPER 1 | 2 | |
| 17 | 90201-21016-00 | WASHER, PLATE | 7 | |
| 18 | 90401-10050-00 | BOLT, UNION | 5 | |
| 19 | 92990-10200-00 | WASHER, PLAIN | 3 | |
| 20 | 6FP-12171-00-00 | CAMSHAFT 1 | 1 | |

CONTINUED ON NEXT FRAME >



VALVE

| Ref No. | Part Number | Description | Qty | Remarks |
|---------|-----------------|--------------------------|-----|---------|
| 21 | 93605-17002-00 | PIN, DOWEL | 1 | |
| 22 | 6FP-11537-00-00 | GEAR, DRIVEN | 1 | |
| 23 | 6DA-11557-00-00 | WASHER 1 | 1 | |
| 24 | 95D95-06012-00 | BOLT, FLANGE DEEP RECESS | 4 | |
| 25 | 95817-10035-00 | BOLT, FLANGE | 1 | |
| 26 | 90201-10144-00 | WASHER, PLATE | 1 | |
| 27 | 6FP-W4624-00-00 | BELT (WITH ROTOR BOLTS) | 1 | |
| 28 | 6FP-12162-10-00 | ARM, VALVE ROCKER 3 | 1 | |
| 29 | 6C5-12159-10-00 | SCREW, VALVE ADJUSTING | 1 | |
| 30 | 6C5-12158-10-00 | NUT, LOCK | 1 | |
| 31 | 93102-48017-00 | .OIL SEAL | 1 | |