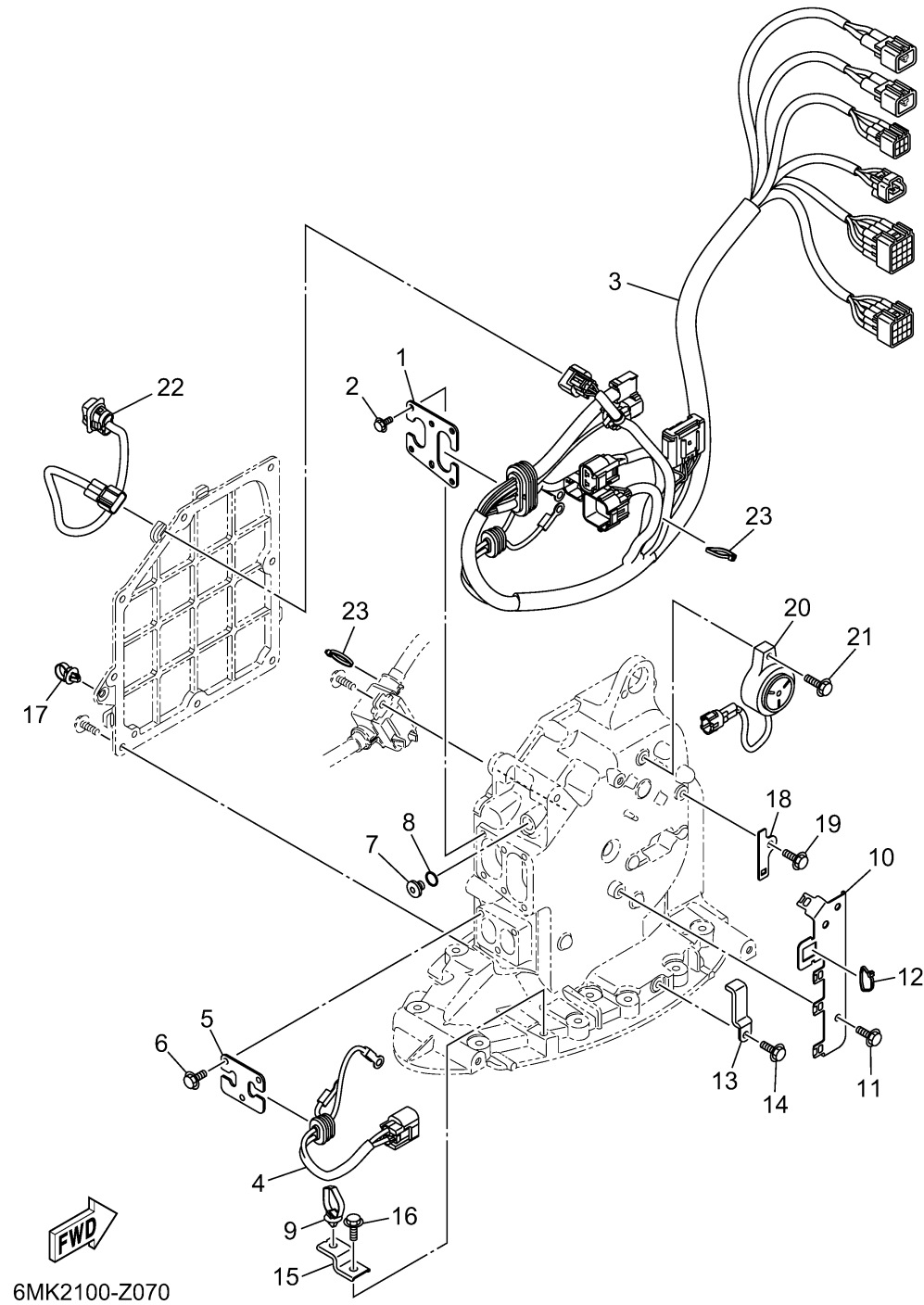


ELECTRICAL 2



Ref No.	Part Number	Description	Qty	Remarks
1	6MK-82388-10-00	PLATE	1	
2	97595-05512-00	BOLT, WITH WASHER	6	
3	6MK-82590-10-00	WIRE HARNESS ASSY	1	
4	6MK-82553-00-00	WIRE LEAD, EXTENSION	1	
5	6MK-82388-00-00	PLATE	1	
6	97595-05512-00	BOLT, WITH WASHER	3	
7	90340-08003-00	PLUG, STRAIGHT SCREW	1	
8	93210-09165-00	O-RING	1	
9	90464-36007-00	CLAMP	1	L(20.0")
10	6MK-68368-00-00	CLAMP	1	
11	95D95-06016-00	BOLT, FLANGE DEEP RECESS	2	
12	90465-11M59-00	CLAMP	1	
13	90462-20005-00	CLAMP	1	
14	95D95-06016-00	BOLT, FLANGE DEEP RECESS	1	
15	6DA-82388-00-00	PLATE	1	
16	95D95-06016-00	BOLT, FLANGE DEEP RECESS	1	
17	90464-36007-00	CLAMP	1	
18	6MK-67879-00-00	STAY	1	
19	95D95-06016-00	BOLT, FLANGE DEEP RECESS	1	
20	6KA-83383-01-00	BUZZER	1	

CONTINUED ON NEXT FRAME >

ELECTRICAL 2

Ref No.	Part Number	Description	Qty	Remarks
21	90119-05M04-00	BOLT, WITH WASHER	1	
22	6GR-82563-00-00	TRIM & TILT SWITCH	1	
23	90465-11M59-00	CLAMP	2	

