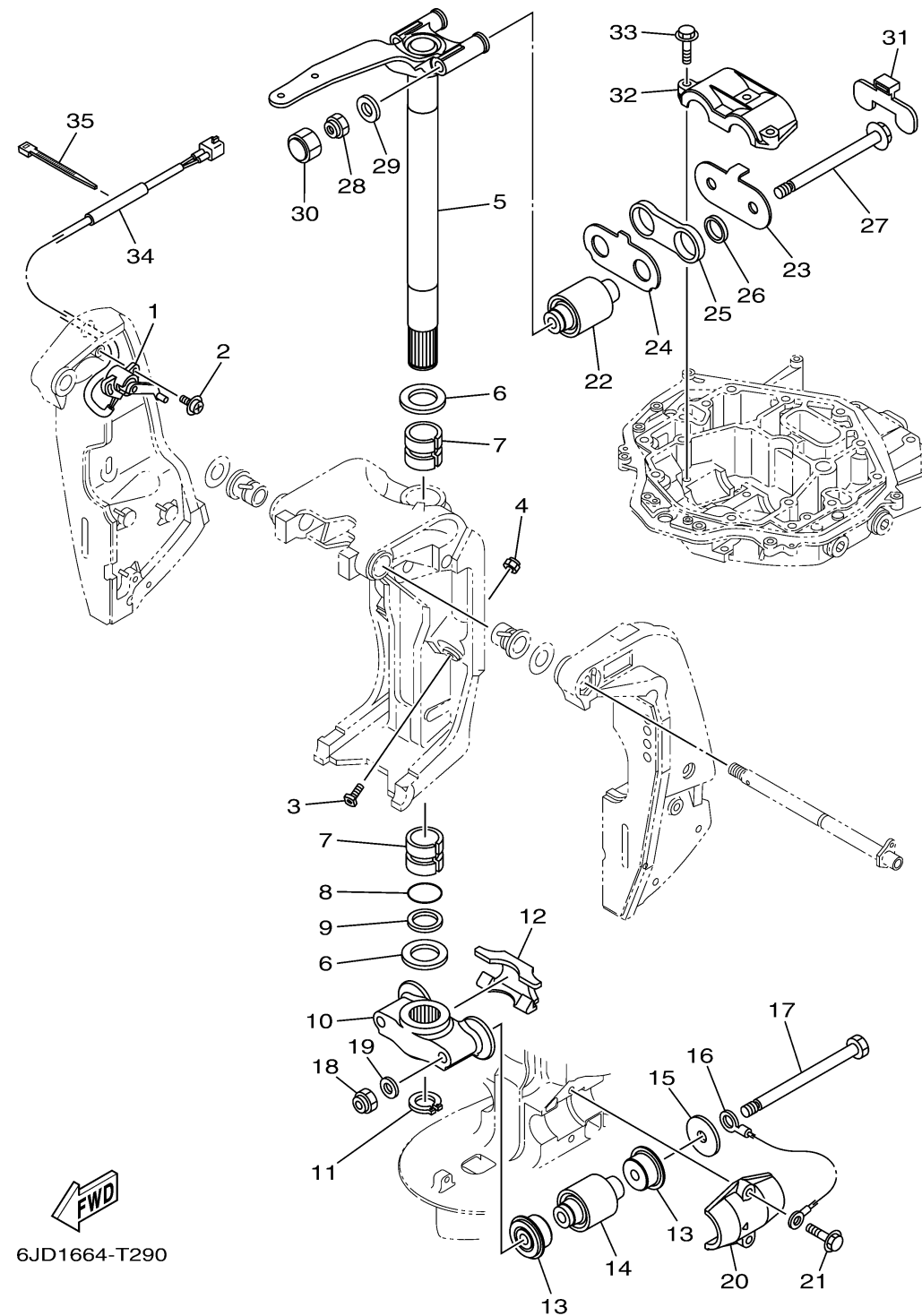


BRACKET 2

| Ref No. | Part Number | Description | Qty | Remarks |
|---------|-----------------|-------------------------------|-----|---------|
| 1 | 69J-83672-13-00 | TRIM SENDER | 1 | |
| 2 | 97985-06216-00 | SCREW, WITH WASHER | 2 | |
| 3 | 6AW-43376-00-00 | BOLT, THRUST RECEIVER | 2 | |
| 4 | 95780-10300-00 | NUT, FLANGE | 2 | |
| 5 | 6CE-42510-00-8D | STEERING BRACKET ASSY | 1 | |
| 6 | 90201-40M00-00 | WASHER, PLATE | 2 | |
| 7 | 90386-39M89-00 | BUSH | 2 | |
| 8 | 93210-35321-00 | O-RING | 1 | |
| 9 | 90202-40M47-00 | WASHER, PLATE | 1 | |
| 10 | 6CE-44551-00-CA | HOUSING, LOWER MOUNT RUBBER 1 | 1 | |
| 11 | 93410-36102-00 | CIRCLIP | 1 | |
| 12 | 6CE-44574-00-00 | STOPPER, LOWER MOUNT RUBBER | 1 | |
| 13 | 6CE-44575-00-00 | DAMPER, LOWER MOUNT RUBBER | 4 | |
| 14 | 6CE-44555-00-00 | MOUNT DAMPER, LOWER SIDE | 2 | |
| 15 | 90201-16032-00 | WASHER, PLATE | 2 | |
| 16 | 6AW-82149-00-00 | WIRE, LEAD 3 | 1 | |
| 17 | 90101-14004-00 | BOLT | 2 | |
| 18 | 90185-14M00-00 | NUT, SELF-LOCKING | 2 | |
| 19 | 92995-14600-00 | WASHER | 2 | |
| 20 | 6CE-44552-00-CA | HOUSING, LOWER MOUNT RUBBER 2 | 2 | |

CONTINUED ON NEXT FRAME >



BRACKET 2

| Ref No. | Part Number | Description | Qty | Remarks |
|---------|-----------------|----------------------------|-----|---------|
| 21 | 90119-10024-00 | BOLT, WITH WASHER | 4 | |
| 22 | 6CE-44514-00-00 | MOUNT DAMPER, UPPER SIDE | 2 | |
| 23 | 6CE-44526-00-00 | PLATE | 1 | |
| 24 | 6CE-44536-00-00 | PLATE 2 | 1 | |
| 25 | 6CE-44532-01-00 | STOPPER, UPPER MOUNT | 1 | |
| 26 | 90387-28013-00 | COLLAR | 2 | |
| 27 | 90105-14005-00 | BOLT, FLANGE | 2 | |
| 28 | 90185-14M00-00 | NUT, SELF-LOCKING | 2 | |
| 29 | 92995-14600-00 | WASHER | 2 | |
| 30 | 6CE-44194-01-00 | CAP | 2 | |
| 31 | 6CE-44533-00-00 | DAMPER, UPPER MOUNT RUBBER | 1 | |
| 32 | 6CE-44511-00-00 | COVER, UPPER MOUNT | 1 | |
| 33 | 90119-10024-00 | BOLT, WITH WASHER | 3 | |
| 34 | 90446-15003-00 | HOSE (L100) | 1 | |
| 35 | 90465-11M10-00 | CLAMP | 1 | |