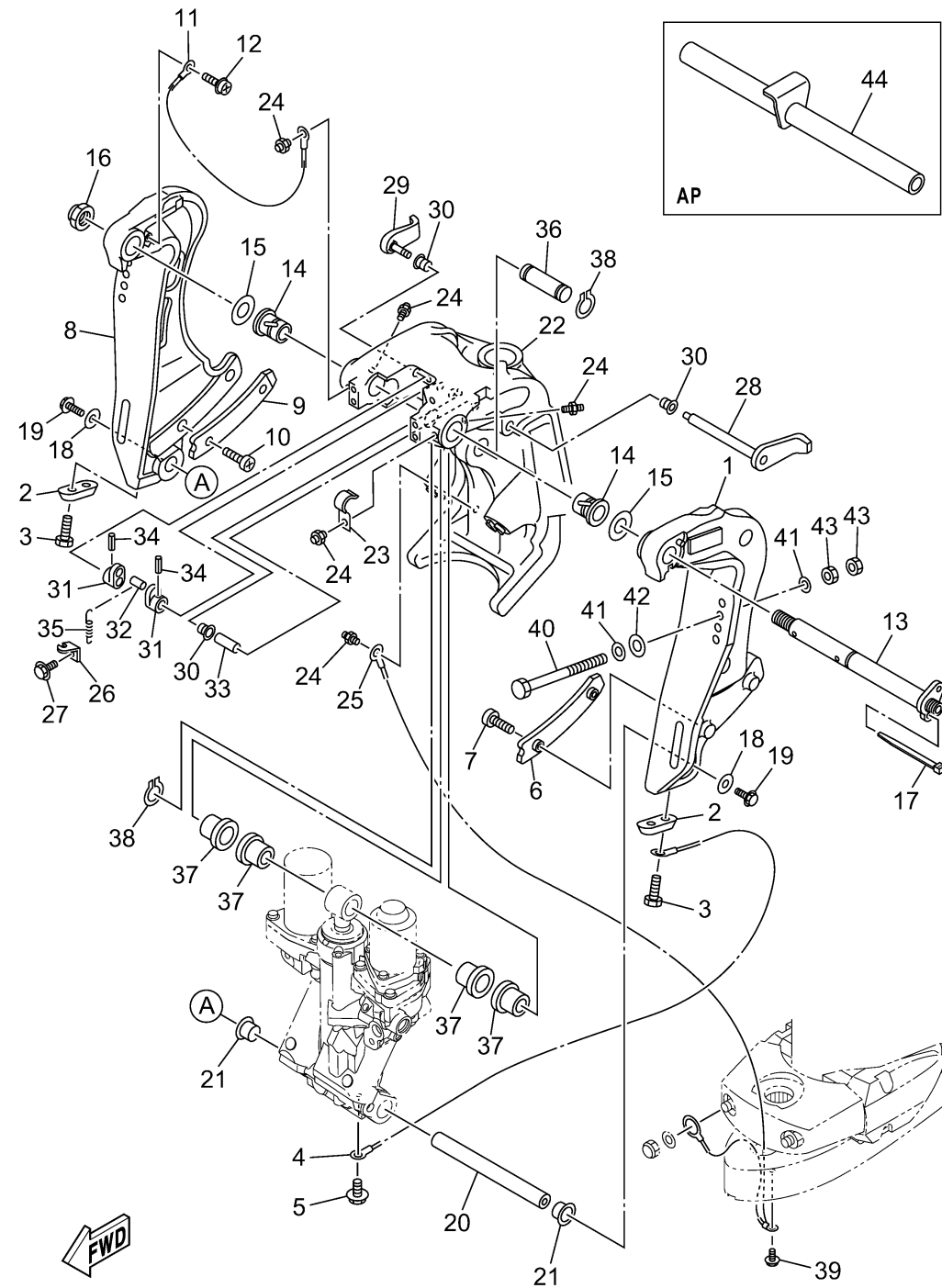


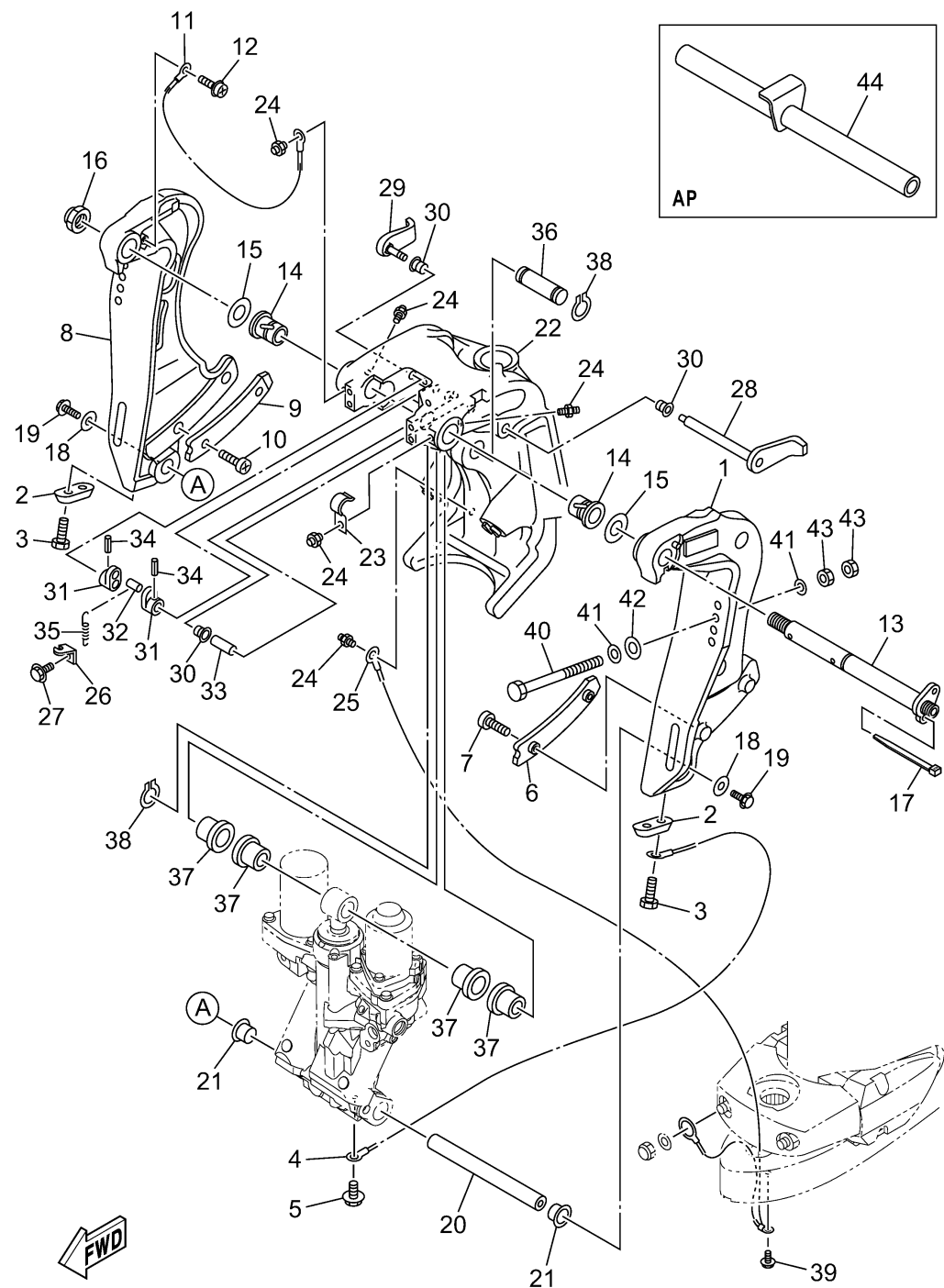
BRACKET 3



6EHD100-Y290

Ref No.	Part Number	Description	Qty	Remarks
1	6CB-43111-10-8D	BRACKET, CLAMP 1	0	
2	65W-45251-00-00	ANODE	0	
3	90101-06020-00	BOLT	0	
4	6E5-82148-00-00	WIRE, LEAD 4	0	
5	97E95-06510-00	BOLT, HEXAGON W/W DEEP RECESS	0	
6	61A-43132-01-00	WASHER, FRICTION	0	
7	97885-06010-00	SCREW, PAN HEAD	0	
8	6CB-43112-10-8D	BRACKET, CLAMP 2	0	
9	61A-43133-01-00	WASHER, FRICTION	0	
10	97885-06010-00	SCREW, PAN HEAD	0	
11	6E5-82148-00-00	WIRE, LEAD 4	0	
12	97985-06212-00	SCREW, WITH WASHER	0	
13	64E-43131-30-00	BOLT, CLAMP BRACKET	0	
14	90386-25M31-00	BUSH	0	
15	90201-26M59-00	WASHER, PLATE	0	
16	90185-22M11-00	NUT, SELF-LOCKING	0	
17	90465-11M10-00	CLAMP	0	
18	90201-10060-00	WASHER, PLATE	0	
19	90119-10054-00	BOLT, WITH WASHER	0	
20	6BC-43818-00-00	PIN, LOWER SHOCK MOUNT	0	

CONTINUED ON NEXT FRAME >



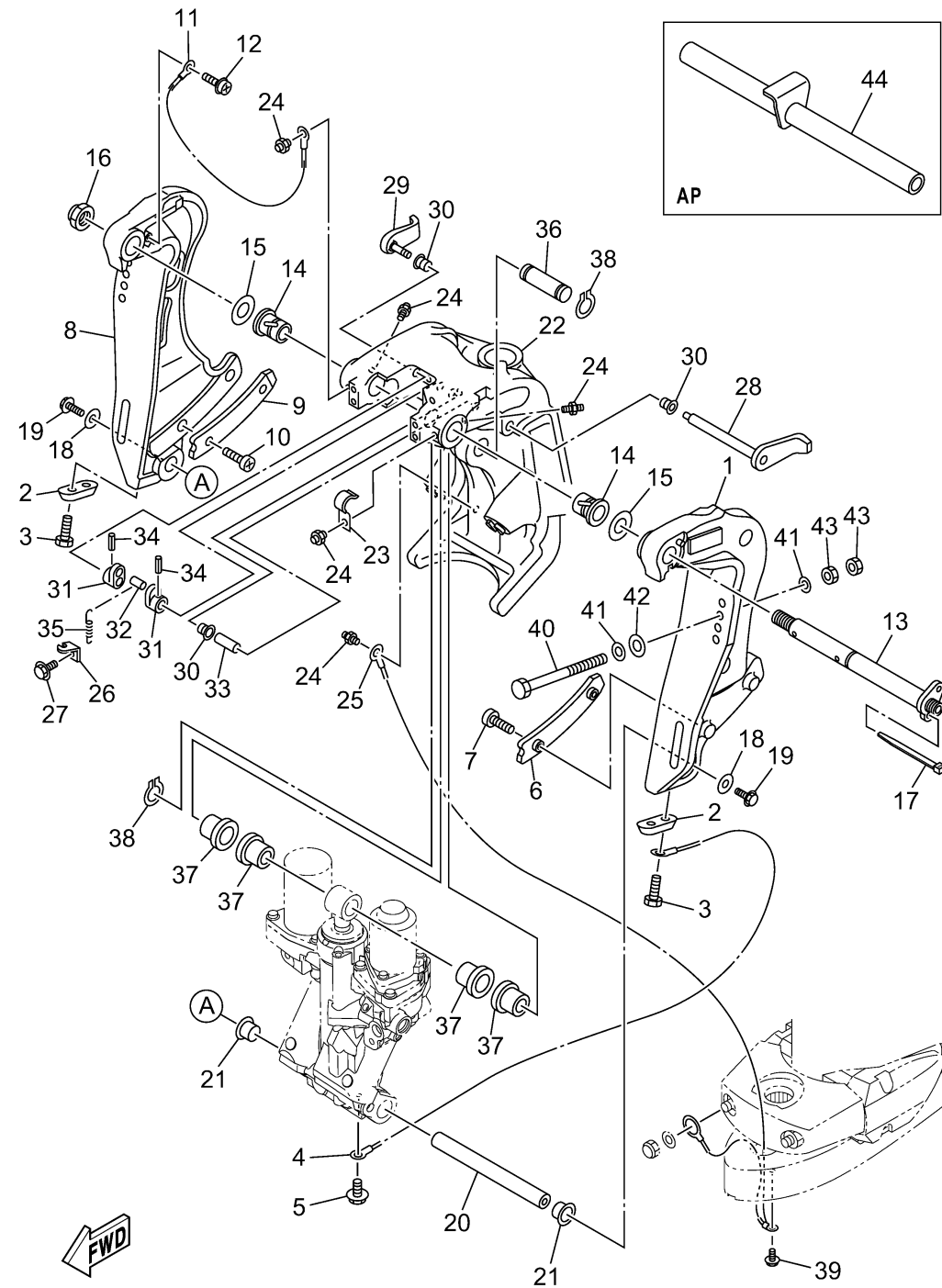
6EHD100-Y290

BRACKET 3

Ref No.	Part Number	Description	Qty	Remarks
21	90386-22M98-00	BUSH	0	
22	64E-43311-10-8D	BRACKET, SWIVEL 1	0	
23	90465-08M63-00	CLAMP	0	
24	93700-06002-00	NIPPLE, GREASE	0	
25	66K-82149-00-00	WIRE, LEAD 3	0	
26	6G5-43144-00-00	HOOK, SPRING	0	
27	97E95-06512-00	BOLT, HEXAGON W/W DEEP RECESS	0	
28	6G5-43181-02-00	LEVER, TILT STOP 1	0	
29	6G5-43185-02-00	LEVER, TILT STOP 2	0	
30	90386-10M16-00	BUSH	0	
31	6G5-43148-00-00	COLLAR, DISTANCE	0	
32	90249-06M19-00	PIN	0	
33	90387-10M05-00	COLLAR	0	
34	91690-30020-00	PIN, SPRING	0	
35	90506-16003-00	SPRING, TENSION	0	
36	64E-43126-10-00	PIN, UPPER SHOCK MOUNT	0	
37	90386-22M98-00	BUSH	0	
38	93410-22M11-00	CIRCLIP	0	
39	95D95-06010-00	BOLT, FLANGE DEEP RECESS	0	
40	90101-12065-00	BOLT (L:130MM)	0	UR

CONTINUED ON NEXT FRAME >

BRACKET 3



6EHD100-Y290

Ref No.	Part Number	Description	Qty	Remarks
40	90101-12066-00	BOLT (L:150MM)	0	UR
41	90201-13M01-00	WASHER, PLATE	0	
42	90201-12426-00	WASHER, PLATE	0	
43	95380-12600-00	NUT	0	
44	6CB-43611-00-00	SHAFT, TILT LOCK	0	AP