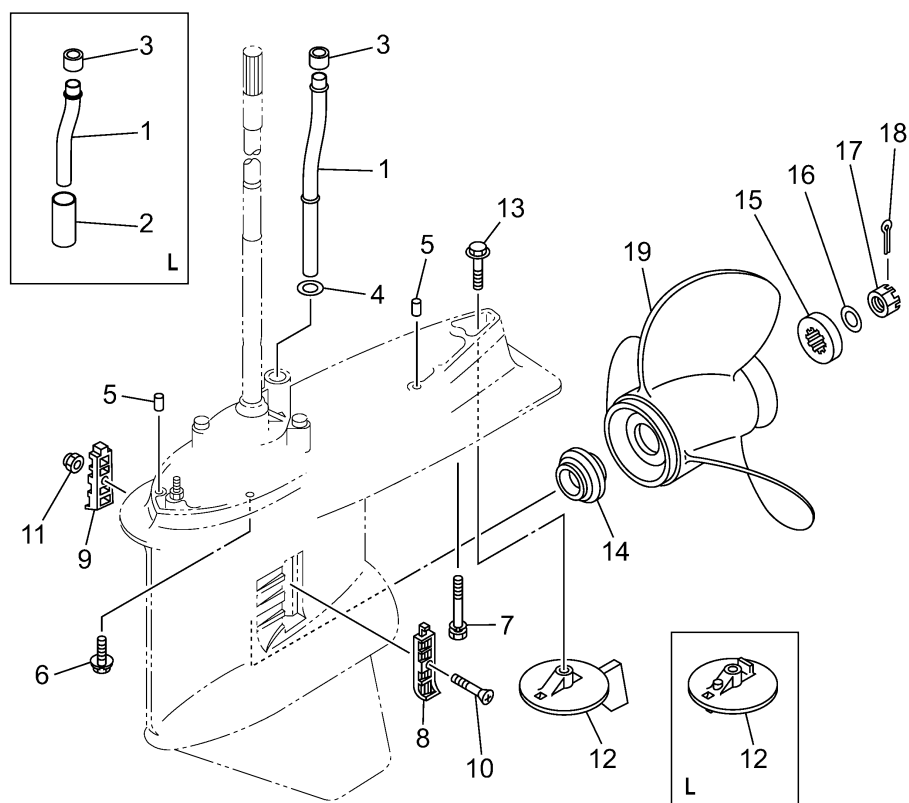
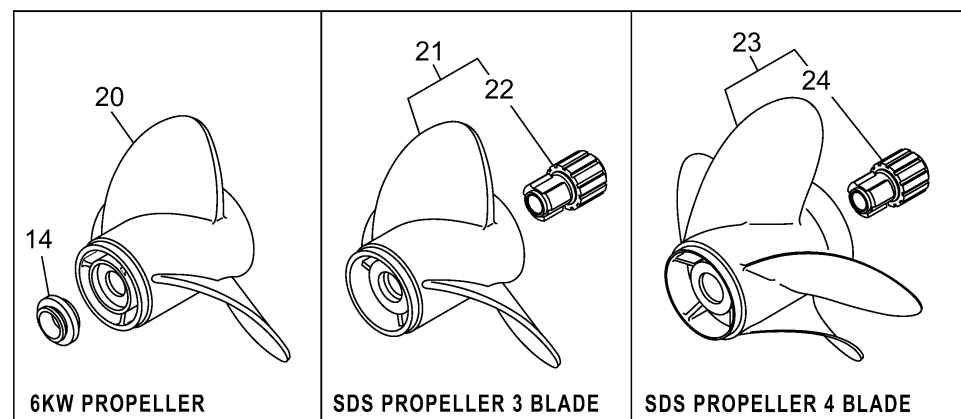


  
 6EHF100-1360

## LOWER CASING DRIVE 2

Ref No.	Part Number	Description	Qty	Remarks
1	6DA-44361-00-00	TUBE, WATER 1	1	X(25.3")
1	6DA-44361-10-00	TUBE, WATER 1	0	L(20.3")
2	90445-23002-00	HOSE (L59)	0	L(20.3")
3	6E5-44365-01-00	DAMPER, WATER SEAL 1	1	
4	90202-16061-00	WASHER, PLATE	1	X(25.3")
5	93608-16M16-00	PIN, DOWEL	2	
6	97E95-10645-00	BOLT, HEXAGON W/W DEEP RECESS	6	
7	90119-10072-00	BOLT, WITH WASHER	1	
8	6J9-45214-00-00	COVER, WATER INLET 1	1	
9	6J9-45215-00-00	COVER, WATER INLET 2	1	
10	90152-05M08-00	SCREW, COUNTERSUNK	1	
11	90185-05002-00	.NUT, NYLON	1	
12	6CE-45373-00-00	ANODE	0	L(20.3")
12	6J9-45371-01-00	TAB-TRIM	1	X(25.3")
13	90105-10M00-00	BOLT, FLANGE	1	
14	6E5-45987-01-00	SPACER 1	1	
14	6KW-45987-00-00	SPACER 1	0	FOR 6KW PROPELER
15	688-45997-01-00	SPACER 2	1	
16	92990-18200-00	WASHER	1	
17	90171-18M04-00	NUT, CASTLE	1	

CONTINUED ON NEXT FRAME >

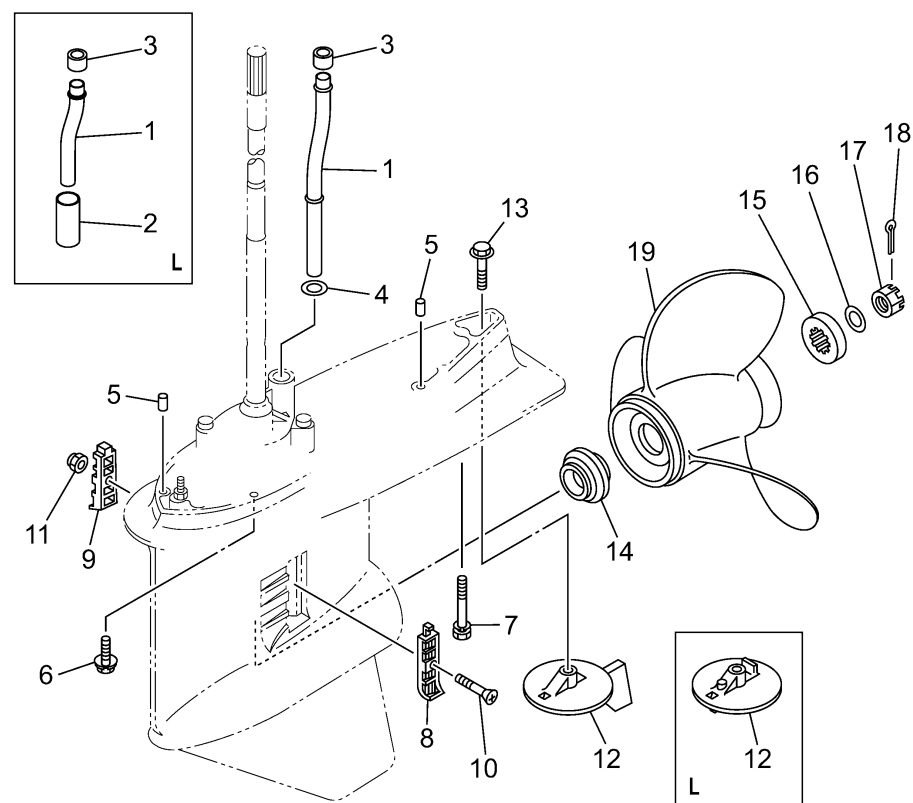
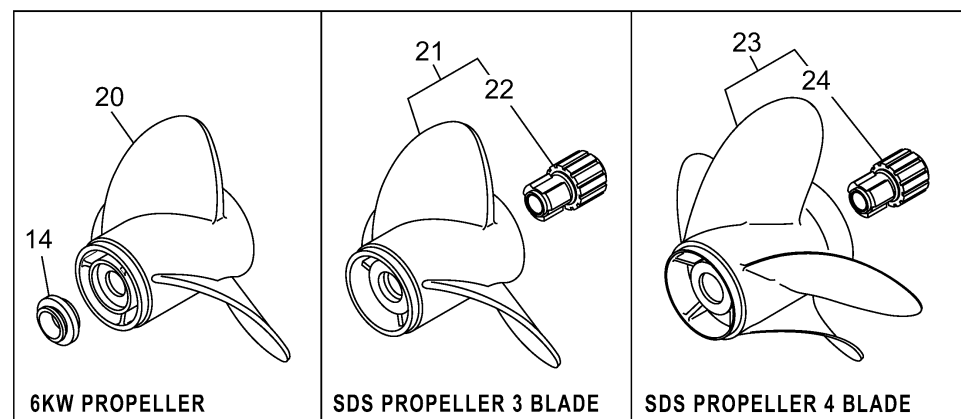


6EHF100-1360

## LOWER CASING DRIVE 2

Ref No.	Part Number	Description	Qty	Remarks
18	91490-40030-00	PIN. COTTER	1	
19	66K-45972-B0-00	PROPELLER (3X14-1/2"X25"-M2)	0	UR
19	66K-45970-B0-00	PROPELLER (3X14-1/2"X27"-M1)	0	UR
19	66K-45974-B0-00	PROPELLER (3X14-1/2"X23"-M2)	0	UR
19	6G5-45941-00-00	PROPELLER (3X15-1/4"X15"-M)	1	UR
19	6G5-45943-01-00	PROPELLER (3X13-3/4"X21"-M)	1	UR
19	6G5-45945-01-00	PROPELLER (3X14"X19"-M)	1	UR
19	6G5-45947-01-00	PROPELLER (3X14-1/2"X17"-M)	1	UR
19	6G5-45949-00-00	PROPELLER (3X13-1/2"X23"-M)	1	UR
19	6G5-45952-00-00	PROPELLER (3X14-5/8"X16"-M)	1	UR
19	6G5-45930-00-00	PROPELLER (3X13-3/8"X25"-M)	1	UR
19	6G5-45972-02-00	PROPELLER (3X13-3/4"X21"-M)	1	UR
19	6G5-45974-03-00	PROPELLER (3X13-3/4"X19"-M2)	1	UR
19	6G5-45976-01-00	PROPELLER (3X13-3/8"X23"-M)	1	UR
19	6G5-45978-03-00	PROPELLER (3X13-3/4"X17"-M2)	1	UR
19	66K-45976-B0-00	PROPELLER (SS 3X14-1/2"X21"-M)	0	UR
20	6KW-45932-00-00	PROPELLER (3X15-1/8"X22"-T3)	0	UR
20	6KW-45974-00-00	PROPELLER (3X15-1/8"X23"-T3)	0	UR
20	6KW-45930-00-00	PROPELLER (3X15-1/8"X24"-T3)	0	UR
20	6KW-45972-00-00	PROPELLER (3X15-1/8"X25"-T3)	0	UR

CONTINUED ON NEXT FRAME >

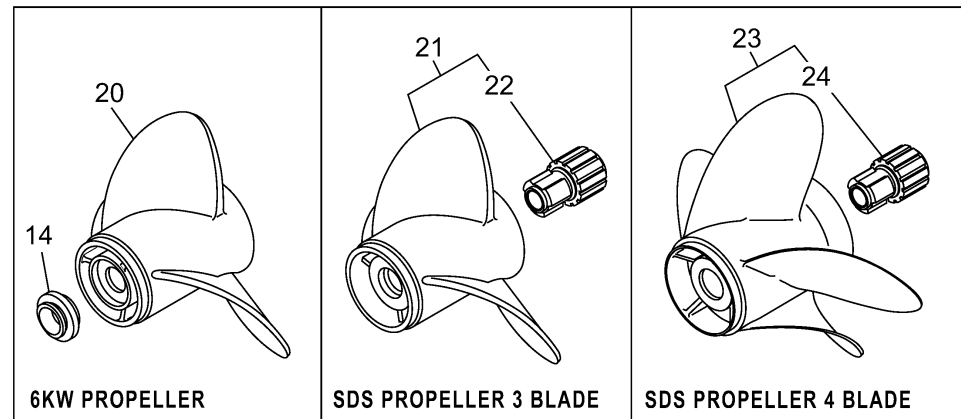


6EHF100-1360

## LOWER CASING DRIVE 2

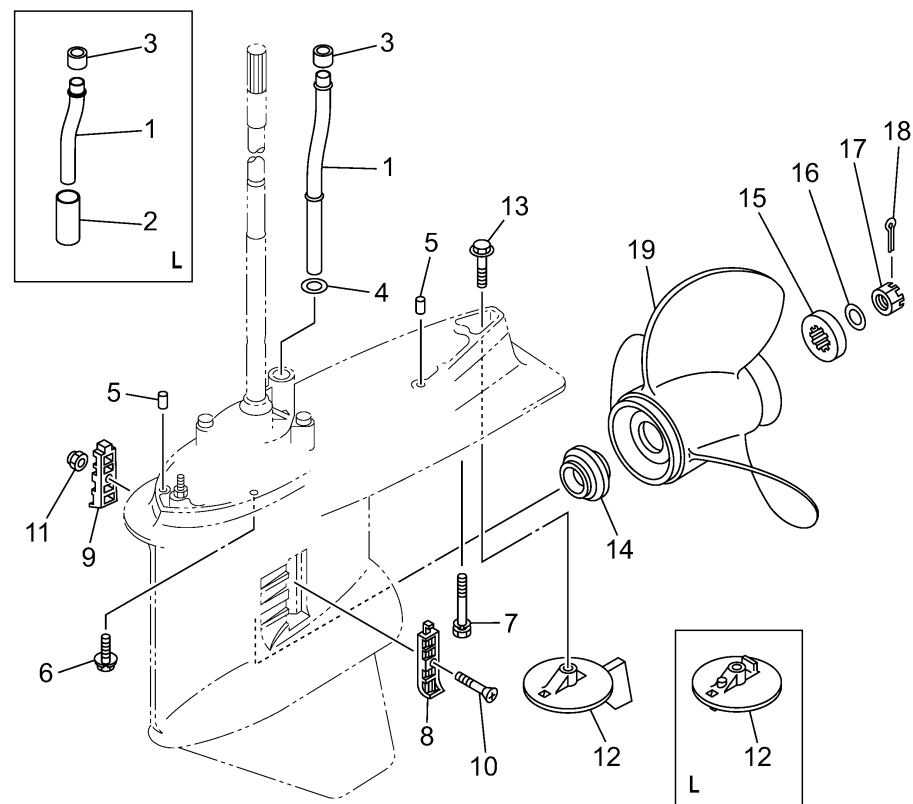
Ref No.	Part Number	Description	Qty	Remarks
20	6KW-45978-00-00	PROPELLER (3X15-1/8"X26"-T3)	0	UR
20	6KW-45970-00-00	PROPELLER (3X15-1/8"X27"-T3)	0	UR
21	6CE-45934-20-00	PROPELLER (3X15-1/4"X18"-T)	1	UR SDS 3 BLADE
21	6CE-45932-20-00	PROPELLER (3X15"X20"-T)	1	UR SDS 3 BLADE
21	6CE-45936-20-00	PROPELLER (3X14-3/4"X22"-T)	1	UR SDS 3 BLADE
21	60H-45970-00-00	PROPELLER (3X14-1/4"X14"-M)	1	UR SDS 3 BLADE
21	60H-45972-00-00	PROPELLER (3X14-1/4"X16"-M)	1	UR SDS 3 BLADE
21	60H-45974-00-00	PROPELLER (3X14-1/4"X18"-M)	1	UR SDS 3 BLADE
21	60H-45976-00-00	PROPELLER (3X14-1/4"X20"-M)	1	UR SDS 3 BLADE
21	60H-45978-00-00	PROPELLER (3X14-1/4"X22"-M)	1	UR SDS 3 BLADE
21	6CE-45D72-20-00	PROPELLER (3X14-3/4"X24"-T)	1	UR SDS 3 BLADE
21	6CE-45D74-20-00	PROPELLER (3X14-3/4"X25"-T)	1	UR SDS 3 BLADE
21	68F-45970-20-00	PROPELLER (3X14-1/2"X15"-M)	1	UR SDS 3 BLADE
21	68F-45972-20-00	PROPELLER (3X14-1/4"X17"-M)	1	UR SDS 3 BLADE
21	68F-45978-20-00	PROPELLER (3X14-1/4"X18"-M)	1	UR SDS 3 BLADE
21	68F-45974-20-00	PROPELLER (3X13-3/4"X19"-M)	1	UR SDS 3 BLADE
21	68F-45976-20-00	PROPELLER (3X13-3/4"X21"-M)	1	UR SDS 3 BLADE
21	68F-45932-20-00	PROPELLER (3X14-1/2"X13"-M)	1	UR SDS 3 BLADE
21	68F-45930-20-00	PROPELLER (3X14-1/2"X14"-M)	1	UR SDS 3 BLADE
21	6CE-45970-20-00	PROPELLER (3X15-1/4"X19"-T)	1	UR SDS 3 BLADE

CONTINUED ON NEXT FRAME >



## LOWER CASING DRIVE 2

Ref No.	Part Number	Description	Qty	Remarks
21	6CE-45972-20-00	PROPELLER (3X15"X21"-T)	1	UR SDS 3 BLADE
21	6CE-45974-20-00	PROPELLER (3X14-3/4"X23"-T)	1	UR SDS 3 BLADE
22	6CE-45C81-10-00	. .DAMPER RUBBER, PROPELLER 1	1	
23	6CE-45B70-20-00	PROPELLER (4X15"X21"-T)	1	UR SDS 4 BLADE
23	6CE-45B72-20-00	PROPELLER (4X15"X22"-T)	1	UR SDS 4 BLADE
23	6CE-45B74-20-00	PROPELLER (4X15"X23"-T)	1	UR SDS 4 BLADE
24	6CE-45C81-10-00	. .DAMPER RUBBER, PROPELLER 1	1	



6EHF100-1360