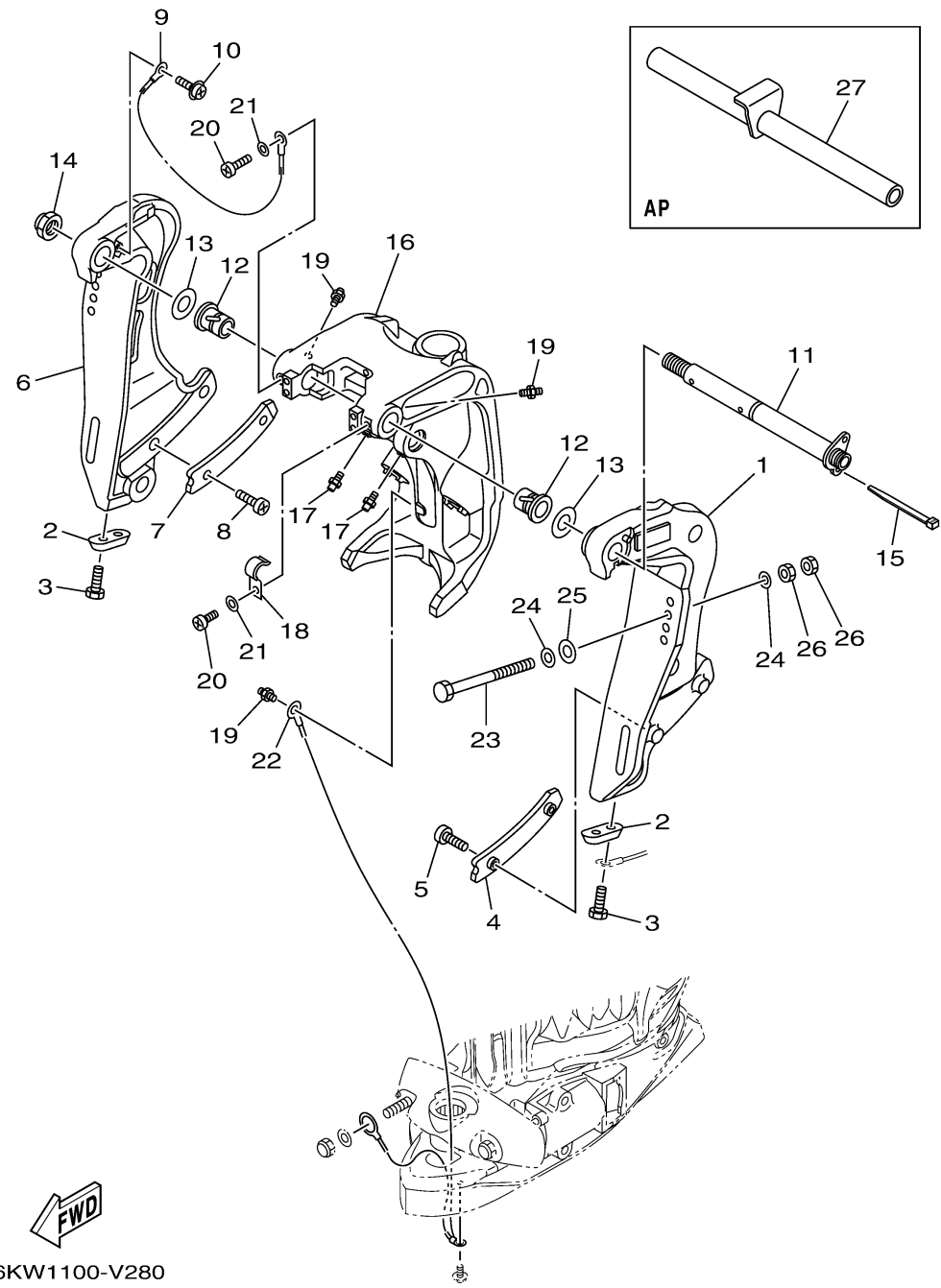


6KW1100-V280

# BRACKET 1

Ref No.	Part Number	Description	Qty	Remarks
1	6CB-43111-10-8D	BRACKET, CLAMP 1	1	
2	65W-45251-00-00	ANODE	2	
3	90101-06020-00	BOLT	4	
4	61A-43132-01-00	WASHER, FRICTION	1	
5	97885-06010-00	SCREW, PAN HEAD	2	
6	6CB-43112-10-8D	BRACKET, CLAMP 2	1	
7	61A-43133-01-00	WASHER, FRICTION	1	
8	97885-06010-00	SCREW, PAN HEAD	2	
9	6E5-82148-00-00	WIRE, LEAD 4	1	
10	97985-06212-00	SCREW, WITH WASHER	1	
11	64E-43131-30-00	BOLT, CLAMP BRACKET	1	
12	90386-25M31-00	BUSH	2	
13	90201-26M59-00	WASHER, PLATE	2	
14	90185-22M11-00	NUT, SELF-LOCKING	1	
15	90465-11M10-00	CLAMP	1	
16	6KW-43311-00-8D	BRACKET, SWIVEL 1	1	
17	93700-06002-00	NIPPLE, GREASE	2	
18	90465-08M63-00	CLAMP	1	
19	93700-06002-00	NIPPLE, GREASE	3	
20	98504-06010-00	SCREW, PAN HEAD	2	

CONTINUED ON NEXT FRAME >



# BRACKET 1

Ref No.	Part Number	Description	Qty	Remarks
21	92903-06600-00	WASHER, PLATE	2	
22	66K-82149-00-00	WIRE, LEAD 3	1	
23	90101-12065-00	BOLT (L:130MM)	4	UR
23	90101-12066-00	BOLT (L:150MM)	2	UR
24	90201-13M01-00	WASHER, PLATE	8	
25	90201-12426-00	WASHER, PLATE	4	
26	95380-12600-00	NUT	8	
27	6CB-43611-00-00	SHAFT, TILT LOCK	1	AP