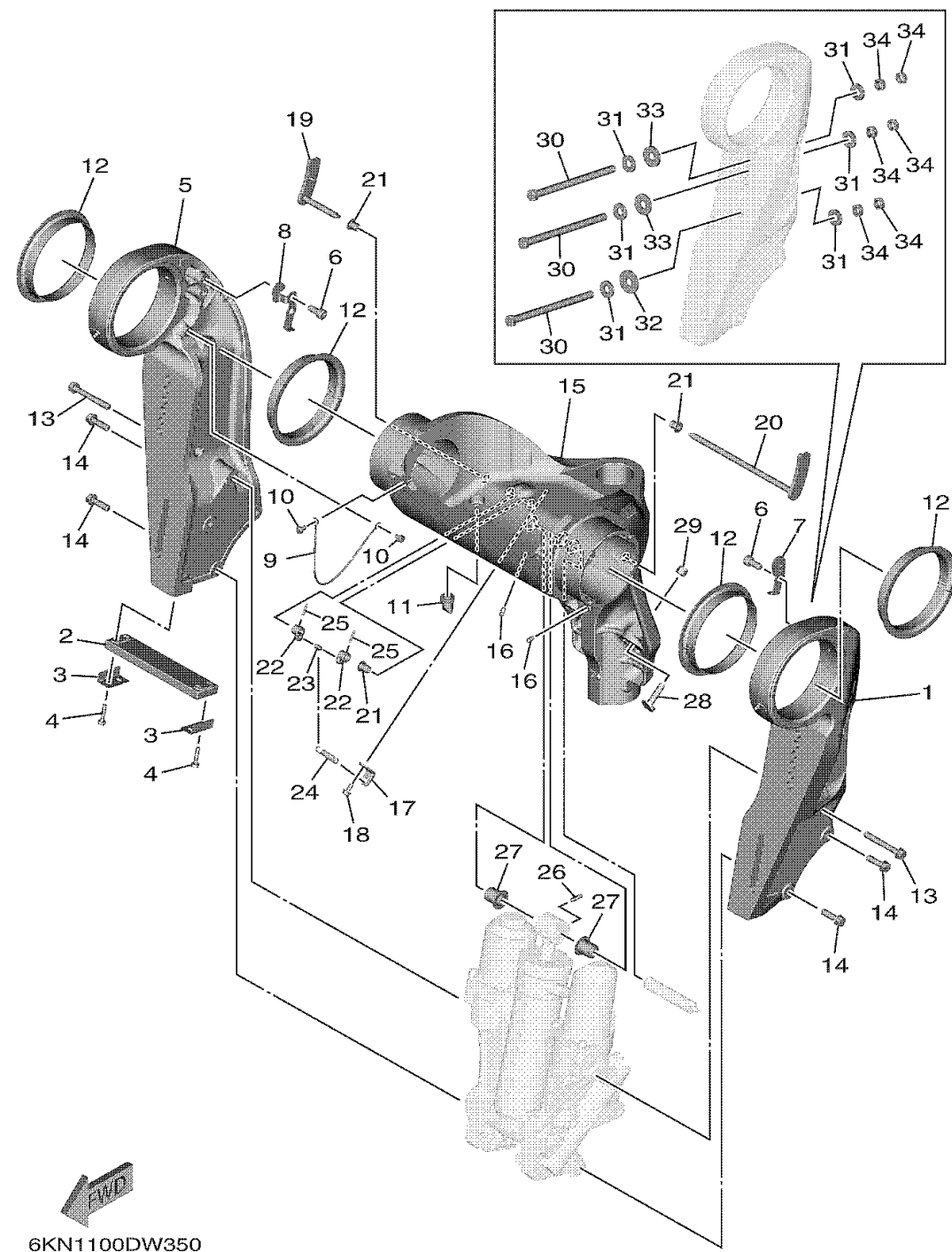


# BRACKET 1

Ref No.	Part Number	Description	Qty	Remarks
1	6GR-4311A-00-8D	BRACKET, CLAMP 1, W/NIPPLE	1	GRAY
1	6GR-4311A-00-CE	BRACKET, CLAMP 1, W/NIPPLE	0	WHITE
1	6GR-4311A-00-CJ	BRACKET, CLAMP 1, W/NIPPLE	0	WARM WHITE
2	6AW-45251-00-00	ANODE	1	
3	6G5-44526-00-00	PLATE	2	
4	97E95-06530-00	BOLT, HEXAGON W/W DEEP RECESS	4	
5	6GR-4311B-00-8D	BRACKET, CLAMP 2, W/NIPPLE	1	GRAY
5	6GR-4311B-00-CE	BRACKET, CLAMP 2, W/NIPPLE	0	WHITE
5	6GR-4311B-00-CJ	BRACKET, CLAMP 2, W/NIPPLE	0	WARM WHITE
6	91380-10020-00	BOLT	4	
7	6GR-4381E-00-00	BRACKET, 1	1	
8	6GR-4381F-00-00	BRACKET, 2	1	
9	6GR-82147-00-00	WIRE, LEAD 5	1	
10	97E95-06510-00	BOLT, HEXAGON W/W DEEP RECESS	2	
11	61A-42717-00-00	RUBBER, SEAL 2	1	
12	6GR-43333-00-00	BUSH. , SWIVEL BRACKET	4	
13	90119-10064-00	BOLT, WITH WASHER	2	
14	90119-10040-00	BOLT, WITH WASHER	6	
15	6GR-43311-02-CJ	BRACKET, SWIVEL 1	0	WARM WHITE
15	6GR-43311-02-8D	BRACKET, SWIVEL 1	1	GRAY

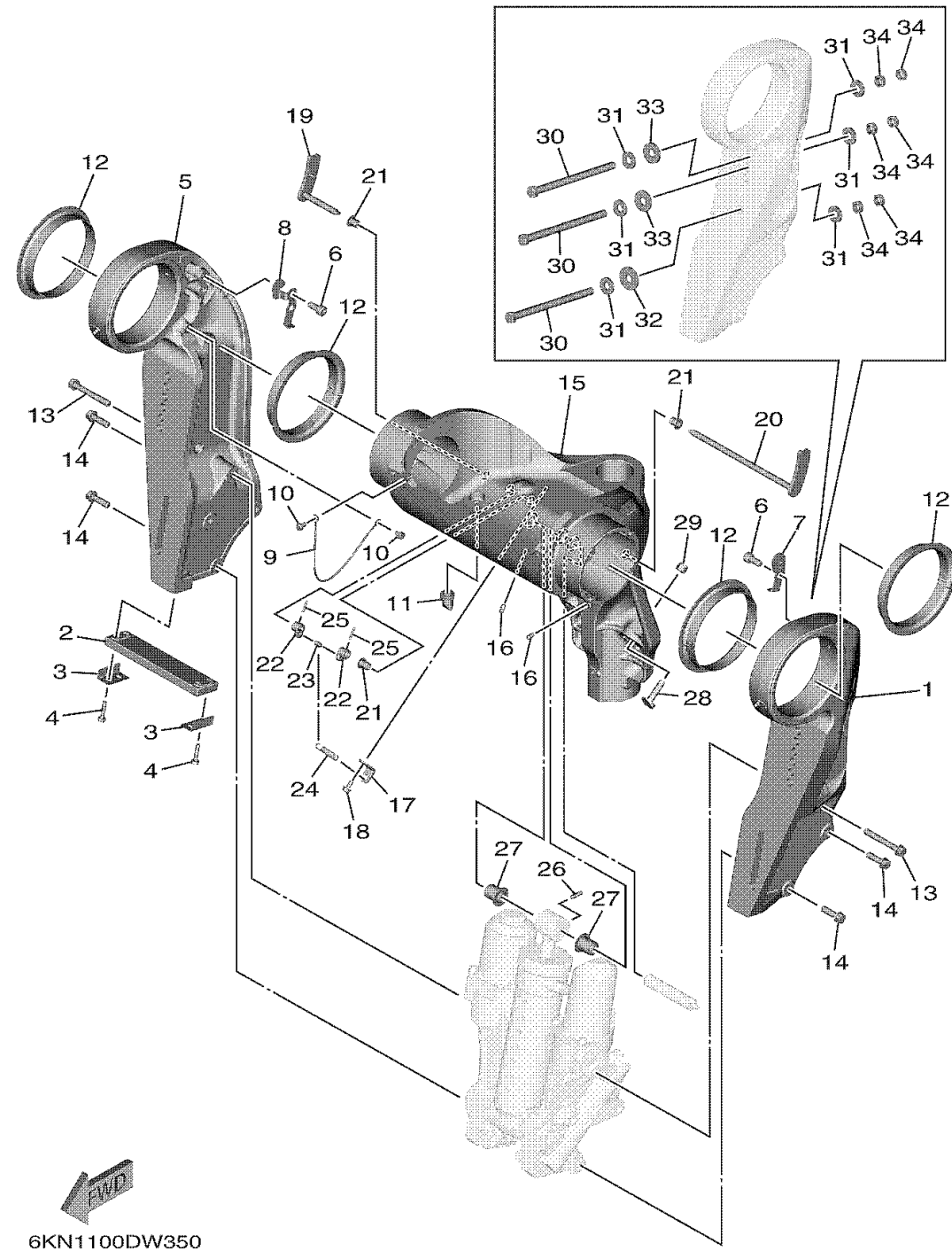
CONTINUED ON NEXT FRAME >



# BRACKET 1

Ref No.	Part Number	Description	Qty	Remarks
15	6GR-43311-02-CE	BRACKET, SWIVEL 1	0	WHITE
16	93700-06002-00	NIPPLE, GREASE	3	
17	6GR-43144-00-00	HOOK, SPRING	1	
18	95D95-06012-00	BOLT, FLANGE DEEP RECESS	1	
19	6GR-43181-00-00	LEVER, TILT STOP 1	1	
20	6GR-43185-00-00	LEVER, TILT STOP 2	1	
21	90386-10M16-00	BUSH	3	
22	6G5-43148-00-00	COLLAR, DISTANCE	2	
23	90249-06M19-00	PIN	1	
24	90506-16010-00	SPRING, TENSION	1	
25	91690-30020-00	PIN, SPRING	2	
26	91690-60022-00	PIN, SPRING	1	
27	90386-20002-00	BUSH	2	
28	6GR-43376-01-00	BOLT, THRUST RECEIVER	2	
29	95780-10300-00	NUT, FLANGE	2	
30	90101-12073-00	BOLT (180MM)	6	
30	90101-12073-00	BOLT (180MM)	2	AP
30	90101-12072-00	BOLT (110MM)	2	AP
30	90101-12067-00	BOLT (150MM)	2	AP
30	90101-12068-00	BOLT (170MM)	2	AP

CONTINUED ON NEXT FRAME >



6KN1100DW350

# BRACKET 1

Ref No.	Part Number	Description	Qty	Remarks
30	90101-12074-00	BOLT (200MM)	2	AP
30	90101-12069-00	BOLT (210MM)	2	AP
30	90101-12070-00	BOLT (230MM)	2	AP
31	90201-12060-00	WASHER, PLATE	12	
32	90201-12426-00	WASHER, PLATE	2	
33	90201-13M19-00	WASHER, PLATE	4	
34	95380-12600-00	NUT	12	